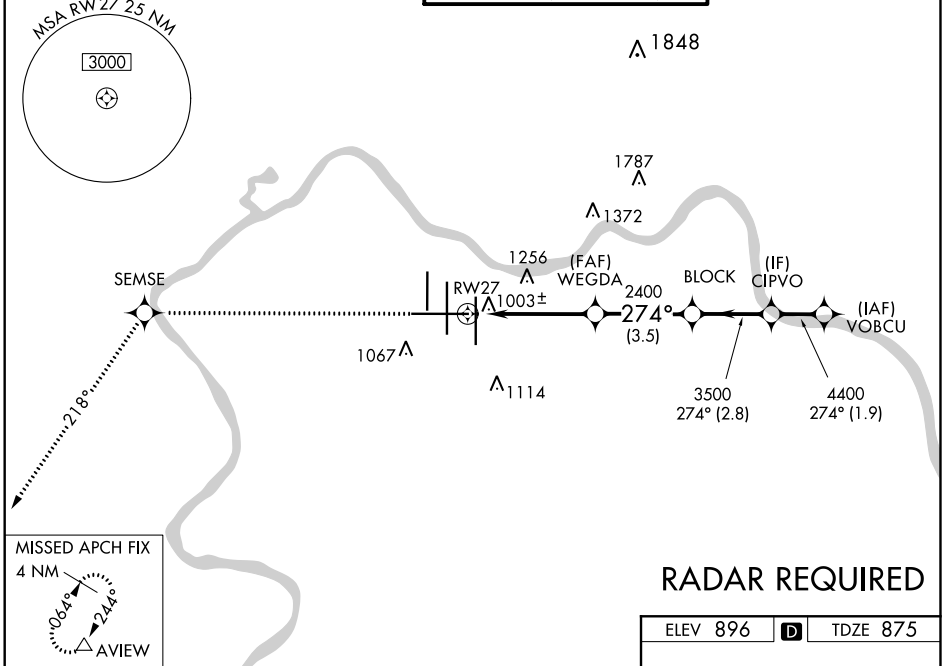


WAAS CH 86809 W27A	APP CRS 274°	Rwy Idg 12000 TDZE 875 Apt Elev 896
----------------------------------------	------------------------	----------------------------------------------------------------

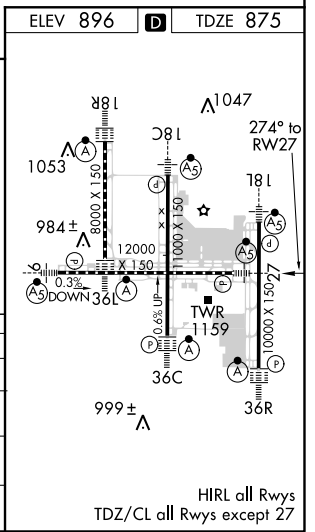
RNAV (GPS) Y RWY 27

CINCINNATI/NORTHERN KENTUCKY INTL (CVG)

<p>▽ For uncompensated Baro-VNAV systems, LNAV/VNAV NA below -16° C (4° F) or above 47° C (116° F). DME/DME RNP-0.3 NA. **RVR 1800 authorized with use of FD or AP or HUD to DA.</p>	MALSR	MISSED APPROACH: Climb to 3000 direct SEMSE then via 218° track to AVIEW and hold.			
	<table border="1"> <tr> <td>D-ATIS ARR 134.375 DEP 135.3</td> <td>CINCINNATI APP CON 119.7 254.25 (090°-269°) 123.875 363.15 (270°-089°)</td> <td>CINCINNATI TOWER 118.975 360.85 (RWY 18L/36R) 118.3 (RWYS 18C/36C, 09/27) 133.325 (RWY 18R/36L)</td> <td>GND CON 121.7</td> <td>CLNC DEL 127.175</td> </tr> </table>	D-ATIS ARR 134.375 DEP 135.3	CINCINNATI APP CON 119.7 254.25 (090°-269°) 123.875 363.15 (270°-089°)	CINCINNATI TOWER 118.975 360.85 (RWY 18L/36R) 118.3 (RWYS 18C/36C, 09/27) 133.325 (RWY 18R/36L)	GND CON 121.7
D-ATIS ARR 134.375 DEP 135.3	CINCINNATI APP CON 119.7 254.25 (090°-269°) 123.875 363.15 (270°-089°)	CINCINNATI TOWER 118.975 360.85 (RWY 18L/36R) 118.3 (RWYS 18C/36C, 09/27) 133.325 (RWY 18R/36L)	GND CON 121.7	CLNC DEL 127.175	



3000	SEMSE	tr 218°	AVIEW	
*LNAV only.				
CATEGORY	A	B	C	D
LPV DA	**1075/24 200 (200-½)			
LNAV/VNAV DA	1349/60 474 (500-1¼)			
LNAV MDA	1420/24 545 (600-½)		1420/60 545 (600-1¼)	
CIRCLING	1460-1 564 (600-1)		1460-1½ 1560-2 564 (600-1½) 664 (700-2)	



SE-1, 03 JAN 2019 to 31 JAN 2019

SE-1, 03 JAN 2019 to 31 JAN 2019

HIRL all Rwy's
TDZ/CL all Rwy's except 27