


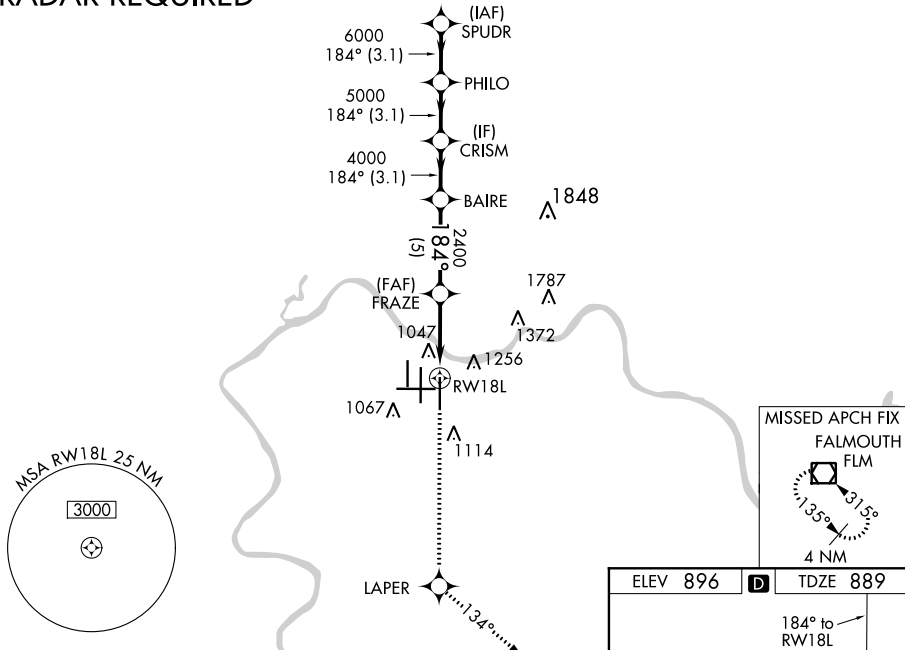
WAAS CH 40103 W18A	APP CRS 184°	Rwy Idg 10000 TDZE 889 Apt Elev 896
--	------------------------	--

RNAV (GPS) Y RWY 18L

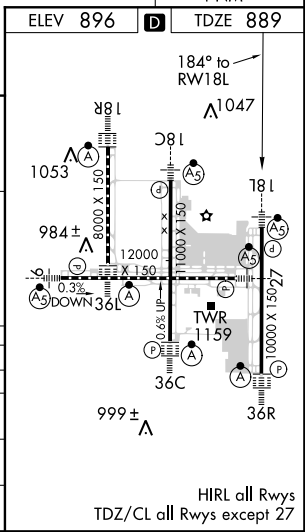
CINCINNATI/NORTHERN KENTUCKY INTL (CVG)

<p>▼ For uncompensated Baro-VNAV systems, LNAV/VNAV NA below -16°C (4°F) or above 47°C (116°F). DME/DME RNP-0.3 NA. Simultaneous approach authorized with Rwy 18C/R. LNAV procedure NA during simultaneous operations. Use of FD or AP providing RNAV track guidance required during simultaneous operations.</p>		<p>MALSR</p> 	<p>MISSED APPROACH: Climb to 3000 direct LAPER and on 134° track to FLM VOR/DME and hold.</p>
<p>D-ATIS ARR 134.375 DEP 135.3</p>	<p>CINCINNATI APP CON 119.7 254.25 (090°-269°) 123.875 363.15 (270°-089°)</p>	<p>CINCINNATI TOWER 118.975 360.85 (RWY 18L/36R) 118.3 (RWYS 18C/36C, 09/27) 133.325 (RWY 18R/36L)</p>	<p>GND CON 121.7 CLNC DEL 127.175</p>

RADAR REQUIRED



<p>VGSI and RNAV glidepath not coincident (VGSI Angle 3.00/TCH 71).</p>				
SPUDR	PHILO	CRISM	BAIRE	FRAZE
7000	6000	5000	4000	2400
<p>GP 3.00° TCH 55</p>				
	3.1 NM	3.1 NM	5 NM	3.3 NM
CATEGORY	A		B	
LPV DA	1089/18		200 (200-1/2)	
LNAV/VNAV DA	1395/60		506 (500-1/4)	
LNAV MDA	1360/24 471 (500-1/2)		1360/40 471 (500-3/4)	
CIRCLING	1460-1 564 (600-1)		1460-1/2 564 (600-1/2)	



SE-1, 03 JAN 2019 to 31 JAN 2019

SE-1, 03 JAN 2019 to 31 JAN 2019