


APP CRS	Rwy Idg	11640
094°	TDZE	883
	Apt Elev	896

RNAV (RNP) Z RWY 9

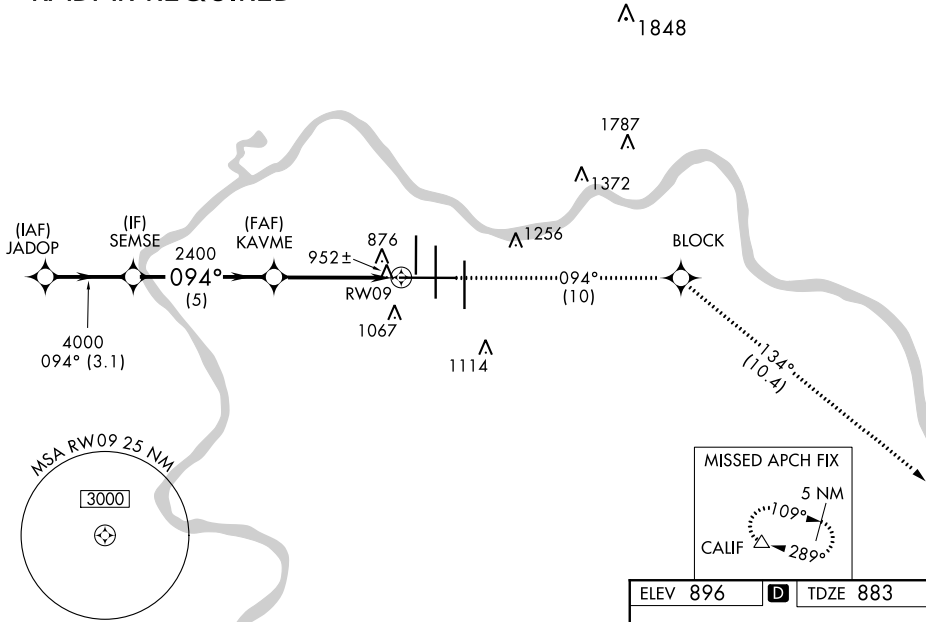
CINCINNATI/NORTHERN KENTUCKY INTL (CVG)

GPS Required. For uncompensated Baro-VNAV systems, procedure NA below -16° C (4° F) or above 47° C (116° F). For inoperative MALSR, increase RNP 0.18 visibility to RVR 5000, RNP 0.30 visibility to RVR 6000.

MALSR

MISSED APPROACH: Climb to 3000 via 094° track to BLOCK and via 134° track to CALIF and hold.

D-ATIS	CINCINNATI APP CON	CINCINNATI TOWER	GND CON	CLNC DEL
ARR 134.375 DEP 135.3	119.7 254.25 (090°-269°) 123.875 363.15 (270°-089°)	118.975 360.85 (RWY 18L/36R) 118.3 (RWYS 18C/36C, 09/27) 133.325 (RWY 18R/36L)	121.7	127.175

RADAR REQUIRED



SE-1, 03 JAN 2019 to 31 JAN 2019

SE-1, 03 JAN 2019 to 31 JAN 2019

VGSI and RNAV glidepath not coincident (VGSI Angle 3.00/TCH 70).

3000	BLOCK	tr 134°	CALIF
↑	⬠		△
tr 094°			

CATEGORY	A	B	C	D
RNP 0.18 DA		1199/24	316 (400-½)	
RNP 0.30 DA		1233/40	350 (400-¾)	

AUTHORIZATION REQUIRED

