

| | | |
|-------------|----------|--------------|
| APP CRS | Rwy Idg | 10000 |
| 004° | TDZE | 896 |
| | Apt Elev | 896 |

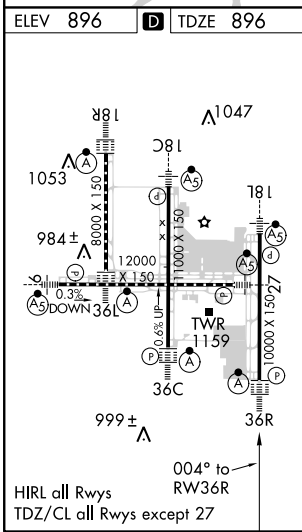
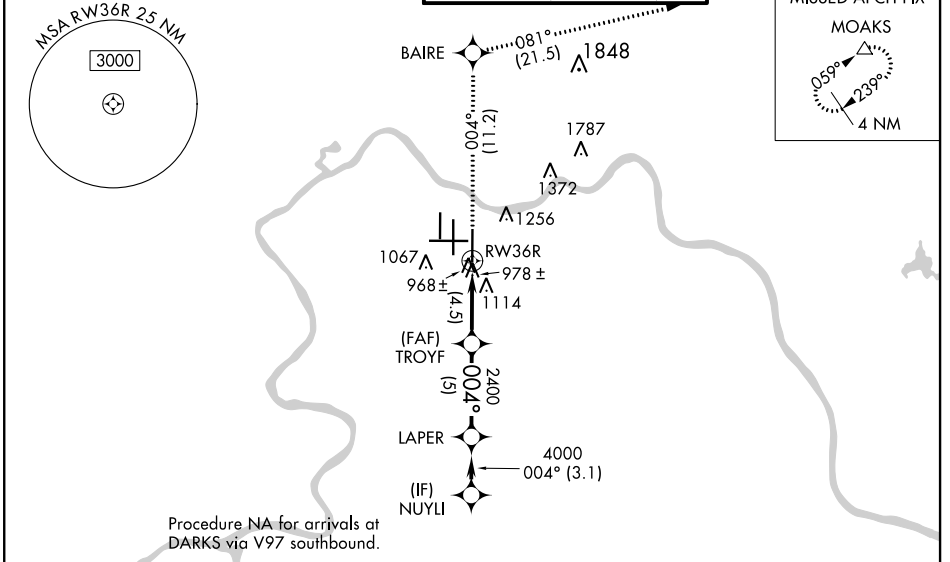
RNAV (RNP) Z RWY 36R

CINCINNATI/NORTHERN KENTUCKY INTL (CVG)

V GPS Required. For uncompensated Baro-VNAV systems, procedure NA below NA-16°C (4°F) or above 47°C (116°F). For inoperative ALSF, increase RNP 0.16 and RNP 0.20 visibility to RVR 6000, RNP 0.30 visibility to 1½. Simultaneous approach authorized with Rwy 36L/C. Use of FD or AP providing RNAV track guidance required during simultaneous operations.

ALSF-2
MISSED APPROACH: Climb to 3000 via 004° track to BAIRE and via 081° track to MOAKS and hold.

| | | | | |
|---|--|---|-------------------------|----------------------------|
| D-ATIS ARR 134.375 DEP 135.3 | CINCINNATI APP CON 119.7 254.25 (090°-269°) 123.875 363.15 (270°-089°) | CINCINNATI TOWER 118.975 360.85 (RWY 18L/36R) 118.3 (RWYS 18C/36C, 09/27) 133.325 (RWY 18R/36L) | GND CON 121.7 | CLNC DEL 127.175 |
|---|--|---|-------------------------|----------------------------|



Procedure NA for arrivals at FLM VOR/DME via V517 southeast bound.

| | | | | | |
|------|-----------|-------|-----------|-------|---|
| 3000 | ↑ tr 004° | BAIRE | ↑ tr 081° | MOAKS | VGS1 and RNAV glidepath not coincident (VGS1 Angle 3.00/TCH 70). NUYYLI |
| 5000 | | | | LAPER | |
| 4000 | | | | | Procedure Turn NA |
| 2400 | | | | | GP 3.00° TCH 55 |
| 2000 | | | | | |
| 1848 | | | | | |
| 1787 | | | | | |
| 1372 | | | | | |
| 1256 | | | | | |
| 1067 | | | | | |
| 978± | | | | | |
| 968± | | | | | |
| 1114 | | | | | |
| 2400 | | | | | |
| 4000 | | | | | |
| 5000 | | | | | |

| CATEGORY | A | B | C | D |
|-------------|---|---------|-------------|---|
| RNP 0.16 DA | | 1284/40 | 388 (400-¾) | |
| RNP 0.20 DA | | 1295/50 | 399 (400-1) | |
| RNP 0.30 DA | | 1329/50 | 433 (500-1) | |

AUTHORIZATION REQUIRED

SE-1, 03 JAN 2019 to 31 JAN 2019

SE-1, 03 JAN 2019 to 31 JAN 2019