

RNAV (RNP) Z RWY 36L

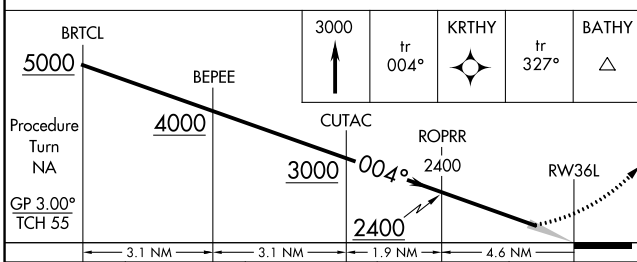
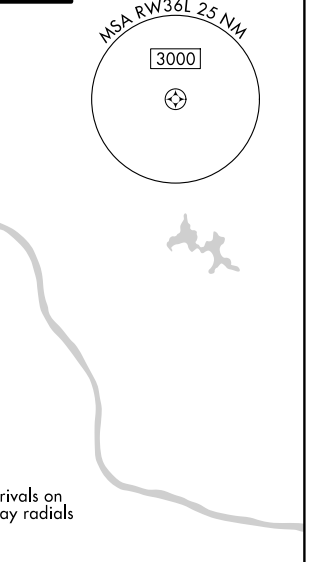
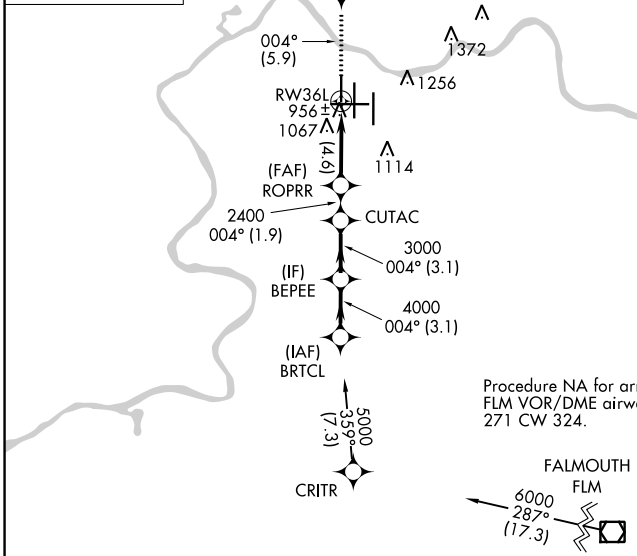
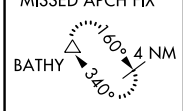
CINCINNATI/NORTHERN KENTUCKY INTL (CVG)

APP CRS	Rwy Idg	8000
004°	TDZE	873
	Apt Elev	896

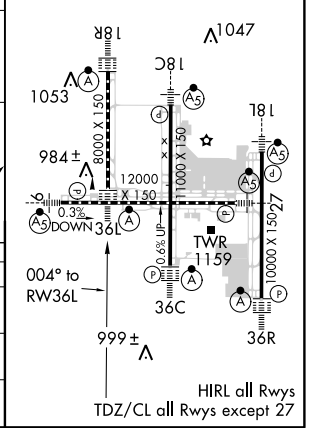
NA GPS Required. For uncompensated Baro-VNAV systems, procedure NA below -16°C (4°F) or above 47°C (116°F). For inoperative ALSF, increase RNP 0.29 and RNP 0.30 visibility to RVR 6000. Simultaneous approach authorized with Rwy 36C/R. Use of FD or AP providing RNAV track guidance required during simultaneous operations.

ALSF-2 MISSED APPROACH: Climb to 3000 via 004° track to KRTHY and via 327° track to BATHY and hold.

D-ATIS ARR 134.375 DEP 135.3	CINCINNATI APP CON 119.7 254.25 (090°-269°) 123.875 363.15 (270°-089°)	CINCINNATI TOWER 118.975 360.85 (RWY 18L/36R) 118.3 (RWYS 18C/36C, 09/27) 133.325 (RWY 18R/36L)	GND CON 121.7	CLNC DEL 127.175
---	--	---	-------------------------	----------------------------



ELEV 896	D TDZE 873
----------	-------------------



CATEGORY	A	B	C	D
RNP 0.29 DA		1261/40	388 (400-¾)	
RNP 0.30 DA		1264/50	391 (400-1)	

AUTHORIZATION REQUIRED

SE-1, 03 JAN 2019 to 31 JAN 2019

SE-1, 03 JAN 2019 to 31 JAN 2019