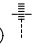


APP CRS	Rwy Idg	10000
184°	TDZE	889
	Apt Elev	896

RNAV (RNP) Z RWY 18L

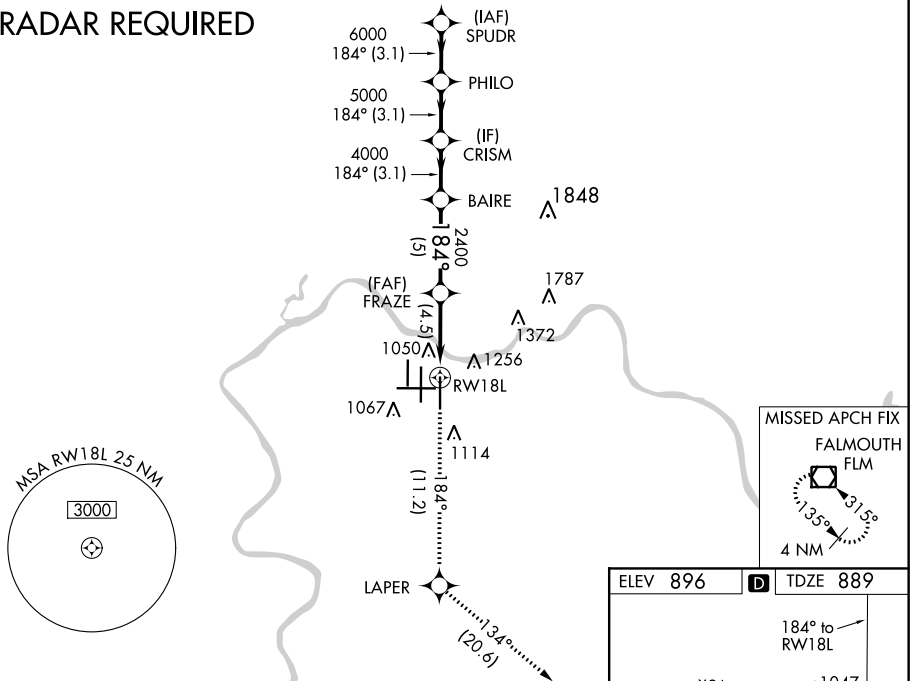
CINCINNATI/NORTHERN KENTUCKY INTL (CVG)

▽ For uncompensated Baro-VNAV systems, procedure NA below -16°C (4°F) or above 47°C (116°F). For inoperative MALS/R, increase RNP 0.21 and RNP 0.25 visibility to RVR 6000, RNP 0.30 visibility to 2. GPS Required. Simultaneous approach authorized with Rwy 18C/R. Use of FD or AP providing RNAV track guidance required during simultaneous operations.

MALS/R

MISSED APPROACH: Climb to 3000 via 184° track to LAPER and via 134° track to FLM VOR/DME and hold.

D-ATIS	CINCINNATI APP CON	CINCINNATI TOWER	GND CON	CLNC DEL
ARR 134.375 DEP 135.3	119.7 254.25 (090°-269°) 123.875 363.15 (270°-089°)	118.975 360.85 (RWY 18L/36R) 118.3 (RWYS 18C/36C, 09/27) 133.325 (RWY 18R/36L)	121.7	127.175

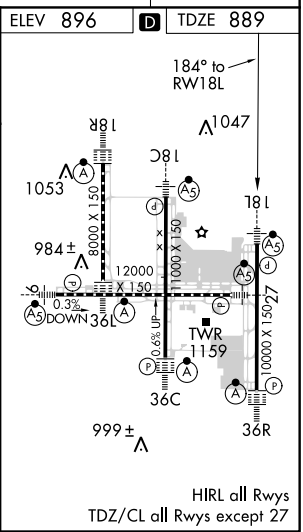
RADAR REQUIRED



VGSI and RNAV glidepath not coincident (VGSI Angle 3.00°/TCH 71).

SPUDR	PHILO	CRISM	BAIRE	FRAZE	RWY 18L	FLM
3.1 NM	3.1 NM	3.1 NM	5 NM	4.5 NM		
A		B		C	D	
RNP 0.21 DA	1272/40		383 (400-¾)			
RNP 0.25 DA	1283/50		394 (400-1)			
RNP 0.30 DA	1472-1½		583 (600-1½)			

AUTHORIZATION REQUIRED



SE-1, 03 JAN 2019 to 31 JAN 2019

SE-1, 03 JAN 2019 to 31 JAN 2019