

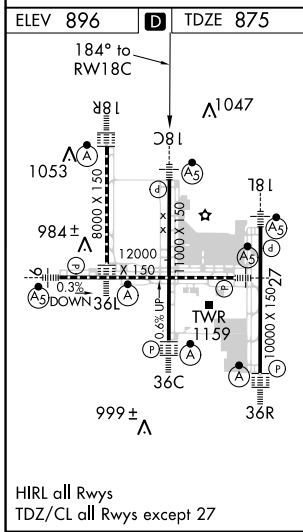
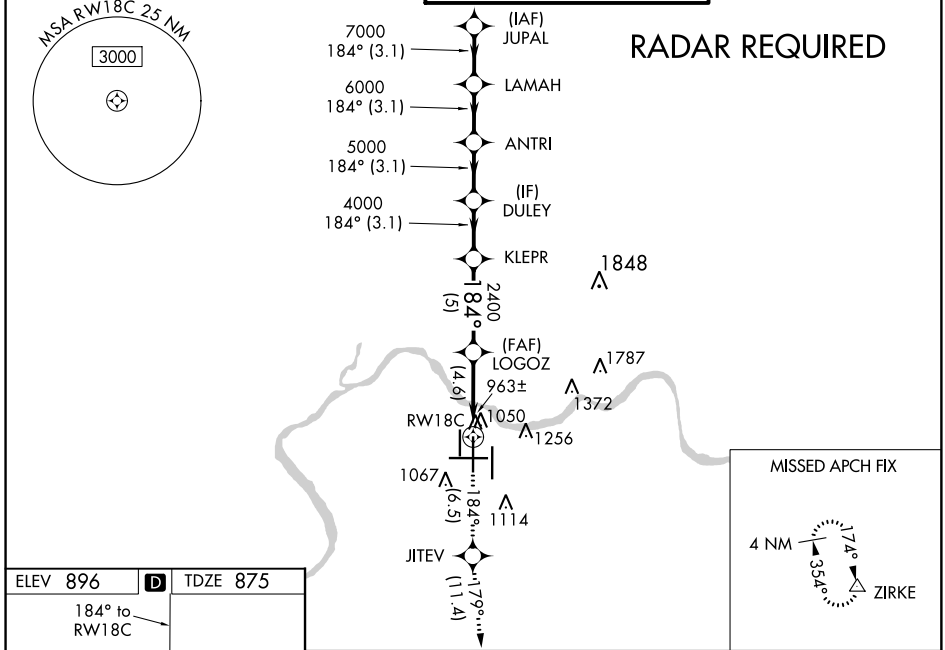
APP CRS	Rwy Idg	11000
184°	TDZE	875
	Apt Elev	896

RNAV (RNP) Z RWY 18C

CINCINNATI/NORTHERN KENTUCKY INTL (CVG)

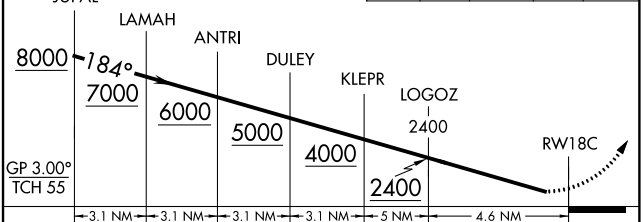
<p>GPS Required. For uncompensated Baro-VNAV systems, procedure NA below -16°C (4°F) or above 47°C (116°F). For inoperative SSALR, increase RNP 0.15 visibility to 1½, RNP 0.30 visibility to 1¾. Simultaneous approach authorized with Rwy 18L/R. Use of FD or AP providing RNAV track guidance required during simultaneous operations.</p>	<p>MALSR</p> <p>MISSED APPROACH: Climb to 3000 via 184° track to JITEV and via 179° track to ZIRKE and hold.</p>
------------------------------------------------------------------------------------------------------------------------------------------------------------------------------------------------------------------------------------------------------------------------------------------------------------------------------------------------------	--------------------------------------------------------------------------------------------------------------------------------

D-ATIS	CINCINNATI APP CON	CINCINNATI TOWER	GND CON	CLNC DEL
ARR 134.375 DEP 135.3	119.7 254.25 (090°- 269°) 123.875 363.15 (270°- 089°)	118.975 360.85 (RWY 18L/36R) 118.3 (RWYS 18C/36C, 09/27) 133.325 (RWY 18R/36L)	121.7	127.175



VGSI and RNAV glidepath not coincident (VGSI Angle 3.00/TCH 68).

3000	tr 184°	JITEV	tr 179°	ZIRKE
------	---------	-------	---------	-------



CATEGORY	A	B	C	D
RNP 0.15 DA	1321/50	446 (500-1)		
RNP 0.30 DA	1389/60	514 (600-1¼)		

AUTHORIZATION REQUIRED

SE-1, 03 JAN 2019 to 31 JAN 2019

SE-1, 03 JAN 2019 to 31 JAN 2019