

(JAKIE.JAKIE4) 17117

JAKIE FOUR ARRIVAL (RNAV)

CINCINNATI/NORTHERN KENTUCKY INTL (CVG)

AL-655 (FAA)

COVINGTON, KENTUCKY

D-ATIS ARR

134.375

CINCINNATI APP CON

119.7 254.25

ARRIVAL ROUTE DESCRIPTION

ARTUR TRANSITION (ARTUR.JAKIE4):

CUBIM TRANSITION (CUBIM.JAKIE4):

DOLLI TRANSITION (DOLLI.JAKIE4):

VOLUNTEER TRANSITION (VXV.JAKIE4):

From JAKIE on track 334° to FLM VOR/DME, thence as depicted to AGEBE.

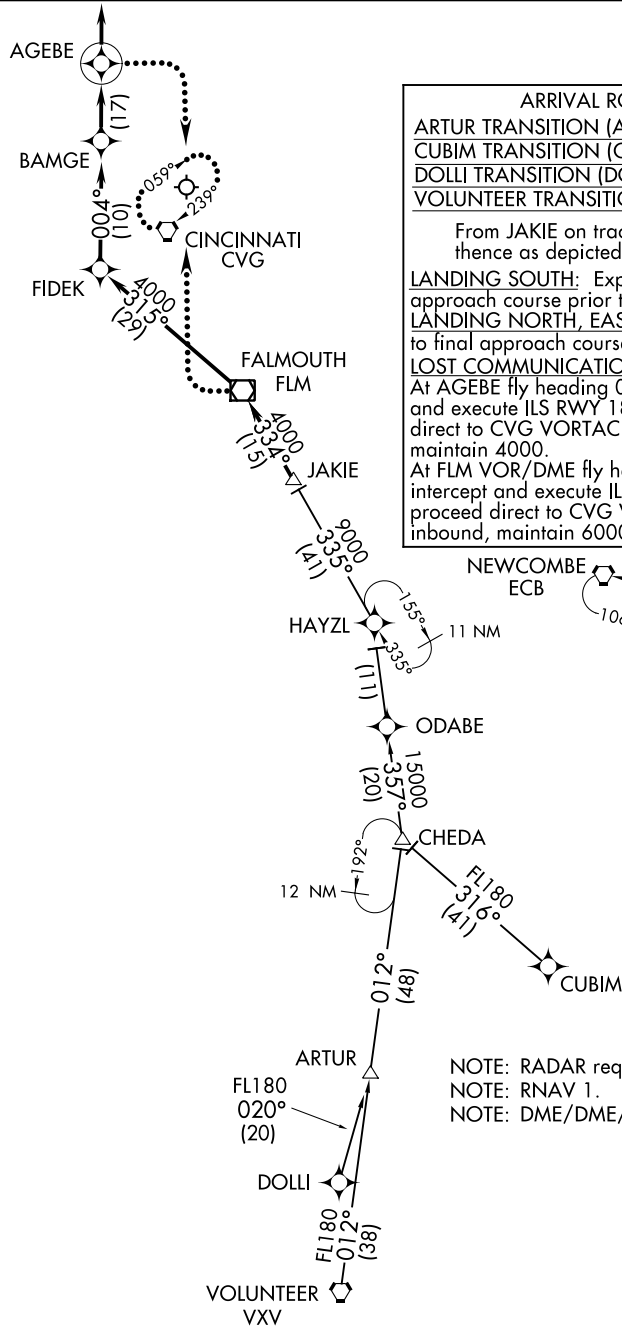
LANDING SOUTH: Expect RADAR vectors to final approach course prior to AGEBE.

LANDING NORTH, EAST, WEST: Expect RADAR vectors to final approach course prior to FIDEK.

LOST COMMUNICATIONS:

At AGEBE fly heading 090°, maintain 4000; intercept and execute ILS RWY 18R approach. If unable, proceed direct to CVG VORTAC and hold, NE, RT, 239° inbound, maintain 4000.

At FLM VOR/DME fly heading 270°, maintain 6000; intercept and execute ILS RWY 36R approach. If unable, proceed direct to CVG VORTAC and hold, NE, RT, 239° inbound, maintain 6000.



ECB not a transition, for holding only as assigned by ATC.

NOTE: RADAR required.

NOTE: RNAV 1.

NOTE: DME/DME/IRU or GPS required.

NOTE: Chart not to scale.

JAKIE FOUR ARRIVAL (RNAV)

(JAKIE.JAKIE4) 05JAN17

COVINGTON, KENTUCKY

CINCINNATI/NORTHERN KENTUCKY INTL (CVG)

SE-1, 03 JAN 2019 to 31 JAN 2019

SE-1, 03 JAN 2019 to 31 JAN 2019