

LOC/DME I-VAC <b>110.75</b> Chan <b>44 (Y)</b>	APP CRS <b>006°</b>	Rwy Idg TDZE Apt Elev	<b>8000</b> <b>873</b> <b>896</b>
--	------------------------	-----------------------------	---

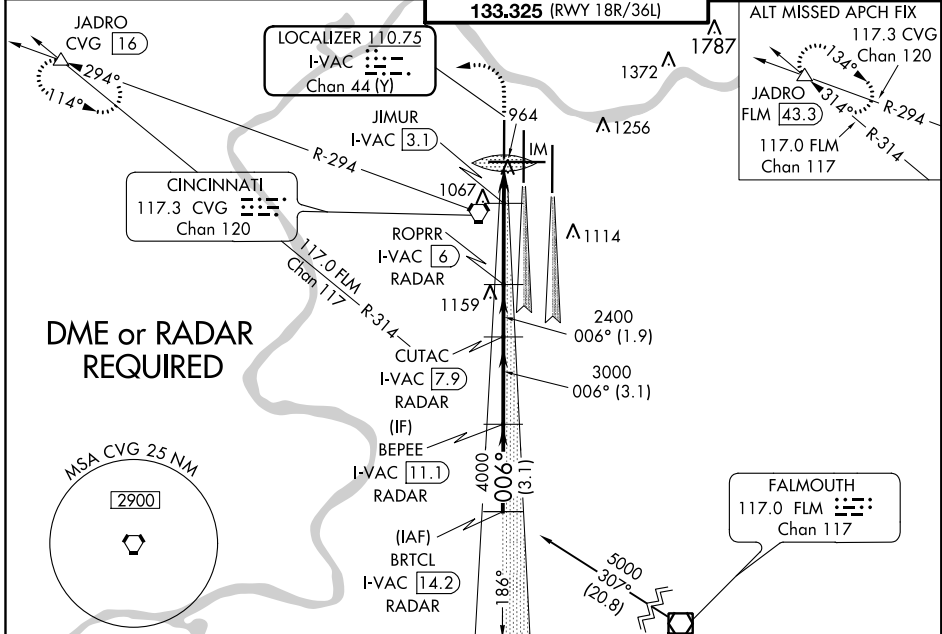
# ILS or LOC RWY 36L

CINCINNATI/NORTHERN KENTUCKY INTL (CVG)

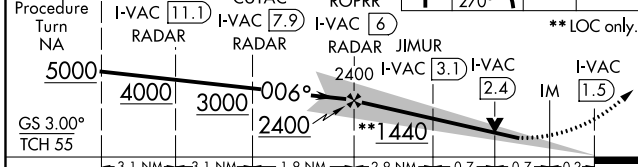
**Simultaneous approach authorized with Rwy 36C and 36R. DME required.**

**MISSED APPROACH:** Climb to 1300 then climbing left turn to 3000 via heading 270° and CVG R-294 to JADRO/CVG 16 DME and hold.

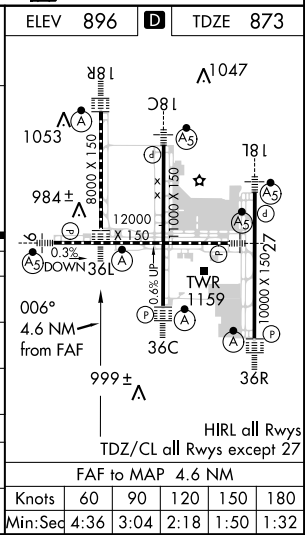
D-ATIS ARR <b>134.375</b> DEP <b>135.3</b>	CINCINNATI APP CON <b>119.7 254.25</b> (090°-269°) <b>123.875 363.15</b> (270°-089°)	CINCINNATI TOWER <b>118.975 360.85</b> (RWY 18L/36R) <b>118.3</b> (RWYS 18C/36C, 09/27) <b>133.325</b> (RWY 18R/36L)	GND CON <b>121.7</b>	CLNC DEL <b>127.175</b>
---	--	---	-------------------------	----------------------------



BRTCL I-VAC <b>14.2</b>	1300	3000	CVG R-294	JADRO	ELEV 896	TDZE 873
RADAR BEPEE	↑	hdg 270°		△		



CATEGORY	A	B	C	D
S-ILS 36L	1073/18 200 (200-½)			
S-LOC 36L	1440/24	567 (600-½)	1440/60	567 (600-1¼)
CIRCLING	1460-1	564 (600-1)	1460-1½ 564 (600-½)	1560-2 664 (700-2)
JIMUR FIX MINIMUMS				
S-LOC 36L	1220/24	347 (400-½)	1220/30	347 (400-¾)
CIRCLING	1460-1	564 (600-1)	1460-1½ 564 (600-½)	1560-2 664 (700-2)



SE-1, 03 JAN 2019 to 31 JAN 2019

SE-1, 03 JAN 2019 to 31 JAN 2019