


LOC/DME I-CIZ 110.15 Chan 38 (Y)	APP CRS 184°	Rwy Idg TDZE 889 Apt Elev 896
--	------------------------	---

ILS or LOC RWY 18L

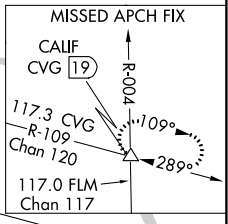
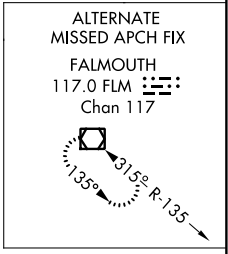
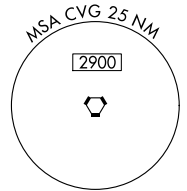
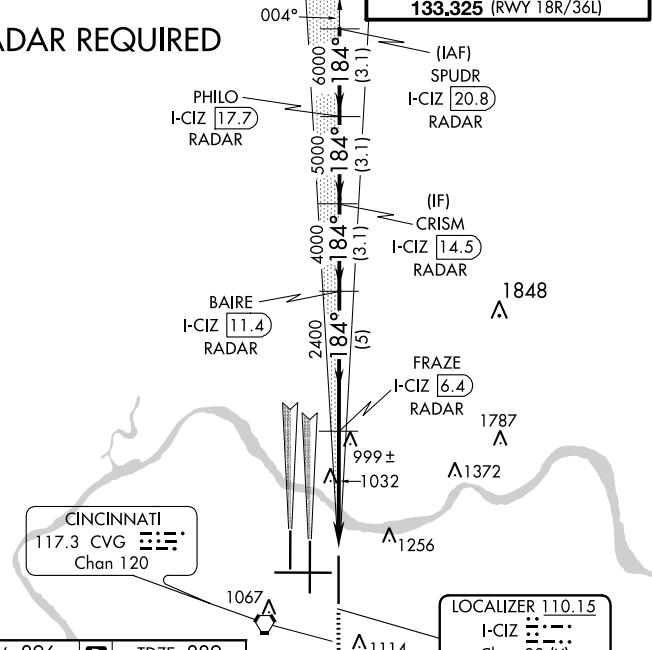
CINCINNATI/NORTHERN KENTUCKY INTL (CVG)

Simultaneous approach authorized with Rwy 18C and 18R.
DME or radar required. For inoperative MALS, increase S-LOC 18L Cat C and D visibility to RVR 6000.

MALS 
MISSED APPROACH: Climb to 1500 then climbing left turn to 3000 via CVG R-109 to CALIF INT/ CVG 19 DME and hold.

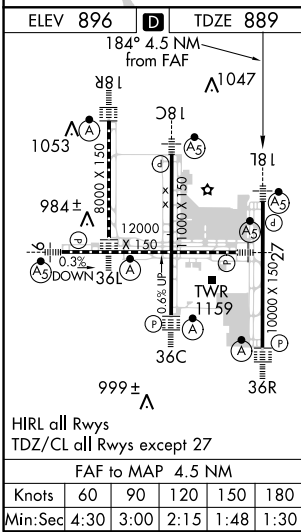
D-ATIS ARR 134.375 DEP 135.3	CINCINNATI APP CON 119.7 254.25 (090°-269°) 123.875 363.15 (270°-089°)	CINCINNATI TOWER 118.975 360.85 (RWY 18L/36R) 118.3 (RWYS 18C/36C, 09/27) 133.325 (RWY 18R/36L)	GND CON 121.7	CLNC DEL 127.175
---	--	---	-------------------------	----------------------------

RADAR REQUIRED



SE-1, 03 JAN 2019 to 31 JAN 2019

SE-1, 03 JAN 2019 to 31 JAN 2019



SPUDR I-CIZ 20.8 RADAR	PHILO I-CIZ 17.7 RADAR	CRISM I-CIZ 14.5 RADAR	BAIRE I-CIZ 11.4 RADAR	FRAZE I-CIZ 6.4 RADAR	I-CIZ 3.0	I-CIZ 1.8
------------------------	------------------------	------------------------	------------------------	-----------------------	-----------	-----------

7000 184° 6000 5000 4000 2400

GS 3.00° TCH 55

CATEGORY	A	B	C	D
S-ILS 18L	1089/18 200 (200-½)			
S-LOC 18L	1300/24	411 (500-½)	1300/40	411 (500-¾)
CIRCLING	1460-1	564 (600-1)	1460-1½ 564 (600-½)	1560-2 664 (700-2)