

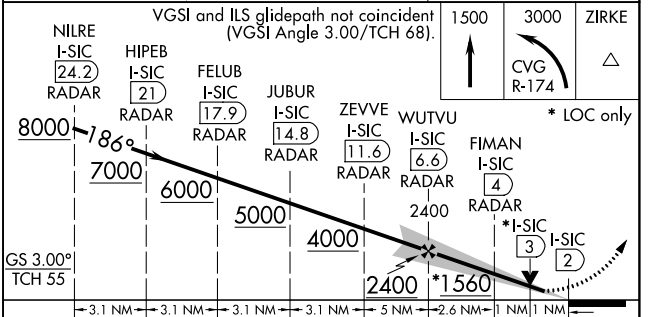
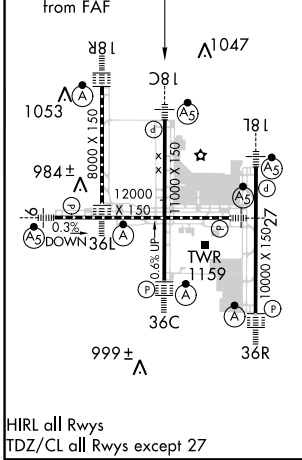
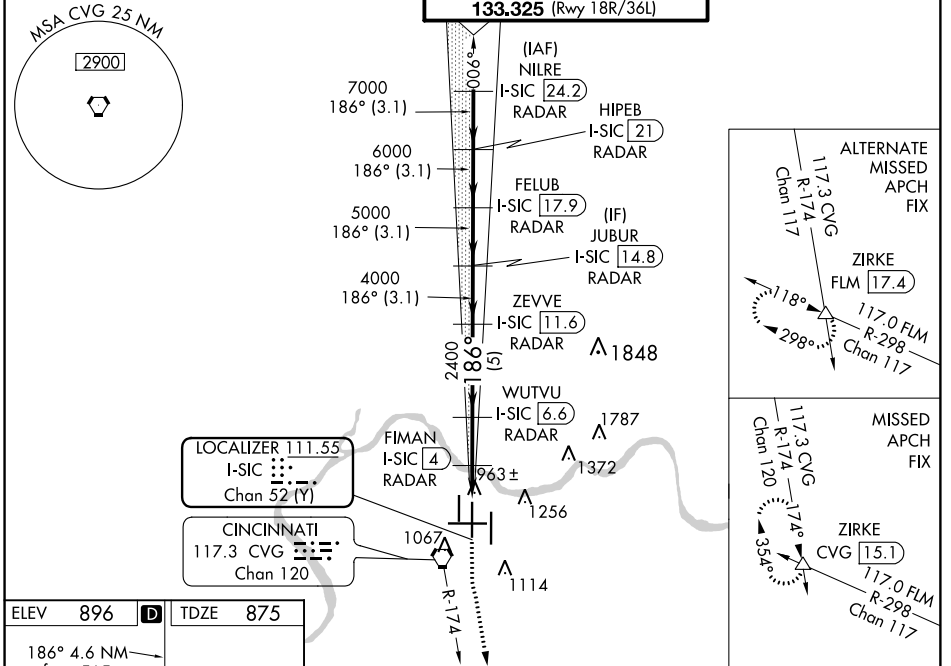
LOC/DME I-SIC <b>111.55</b> Chan <b>52 (Y)</b>	APP CRS <b>186°</b>	Rwy Idg <b>11000</b> TDZE <b>875</b> Apt Elev <b>896</b>
--	------------------------	--

# ILS or LOC RWY 18C

CINCINNATI/NORTHERN KENTUCKY INTL (CVG)

RADAR required for procedure entry. DME or RADAR required.	MALSR 	MISSED APPROACH: Climb to 1500 then climbing left turn to 3000 on CVG R-174 to ZIRKE INT/CVG 15.1 DME and hold.
Simultaneous approach authorized.		

D-ATIS ARR <b>134.375</b> DEP <b>135.3</b>	CINCINNATI APP CON <b>119.7 254.25</b> (090°-269°) <b>123.875 363.15</b> (270°-089°)	CINCINNATI TOWER <b>118.975 360.85</b> (Rwy 18L/36R) <b>118.3</b> (Rwys 18C/36C, 09/27) <b>133.325</b> (Rwy 18R/36L)	GND CON <b>121.7</b>	CLNC DEL <b>127.175</b>
---	--	---	-------------------------	----------------------------



CATEGORY	A	B	C	D
S-ILS 18C	1075/18		200 (200-½)	
S-LOC 18C	1260/24 385 (400-½)		1260/35 385 (400-¾)	
<b>C</b> CIRCLING	1460-1 564 (600-1)		1560-1¾ 664 (700-1¾) 1560-2 664 (700-2)	

SE-1, 03 JAN 2019 to 31 JAN 2019

SE-1, 03 JAN 2019 to 31 JAN 2019