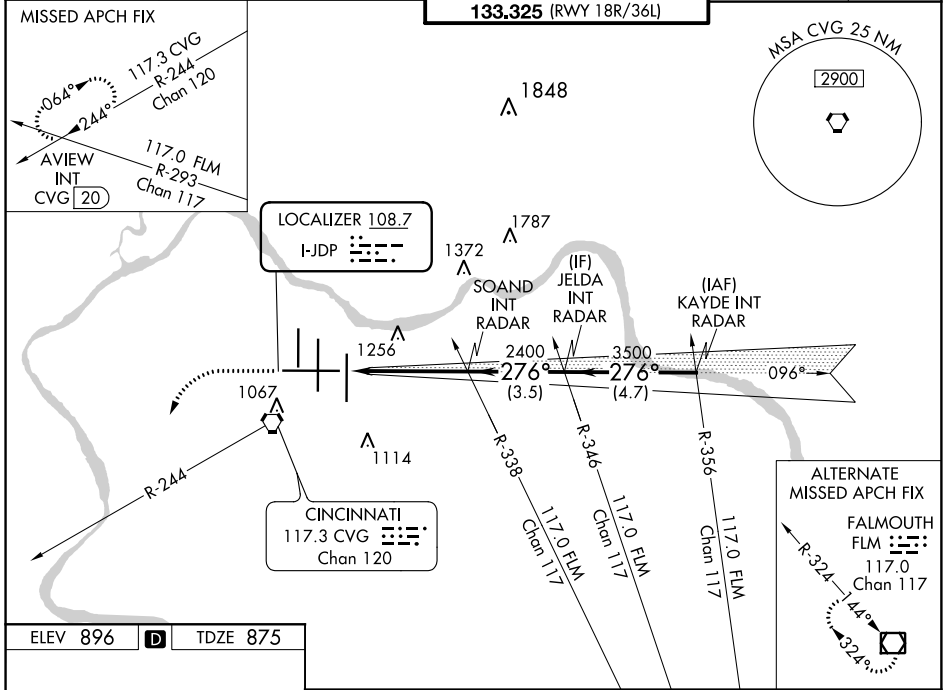


LOC I-JDP 108.7	APP CRS 276°	Rwy Idg 12000 TDZE 875 Apt Elev 896
---------------------------	------------------------	--

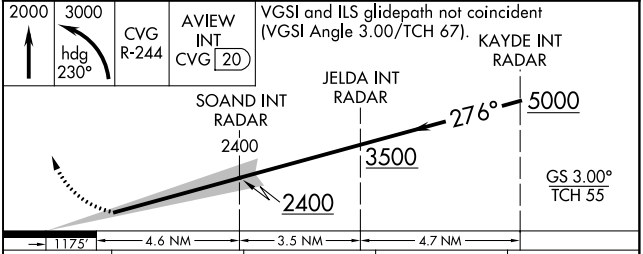
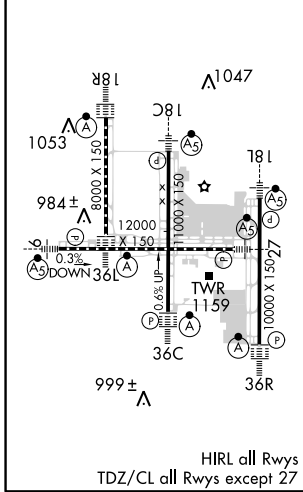
ILS RWY 27 (SA CAT I & II)
CINCINNATI/NORTHERN KENTUCKY INTL (CVG)

RADAR required for procedure entry.		MALS R	MISSED APPROACH: Climb to 2000 then climbing left turn to 3000 on heading 230° and CVG R-244 to AVIEW INT/CVG 20 DME and hold.	
SA Cat I: Requires specific OPSPEC, MSPEC, or LOA approval and use of HUD to DH. SA Cat II: Reduced lighting: Requires specific OPSPEC, MSPEC or LOA approval and use of autoland or HUD to touchdown.				

D-ATIS ARR 134.375 DEP 135.3	CINCINNATI APP CON 119.7 254.25 (090°- 269°) 123.875 363.15 (270°- 089°)	CINCINNATI TOWER 118.975 360.85 (RWY 18L/36R) 118.3 (RWYS 18C/36C, 09/27) 133.325 (RWY 18R/36L)	GND CON 121.7	CLNC DEL 127.175
---	--	---	-------------------------	----------------------------



ELEV 896	D	TDZE 875
----------	----------	----------



CATEGORY	A	B	C	D
S-ILS 27	SA CAT I	RA 137/14	150 DA 1025	
S-ILS 27	SA CAT II	RA 90/12	100 DA 975	

SA CATEGORY I & II ILS - SPECIAL AIRCREW & AIRCRAFT CERTIFICATION REQUIRED

SE-1, 03 JAN 2019 to 31 JAN 2019

SE-1, 03 JAN 2019 to 31 JAN 2019