

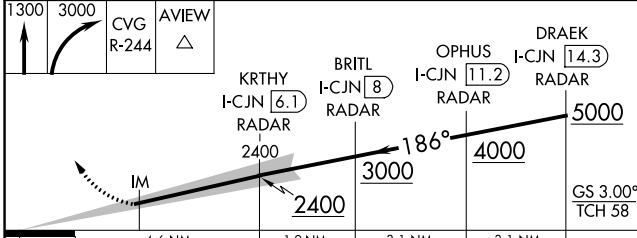
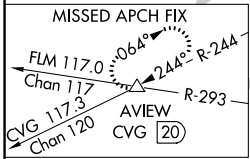
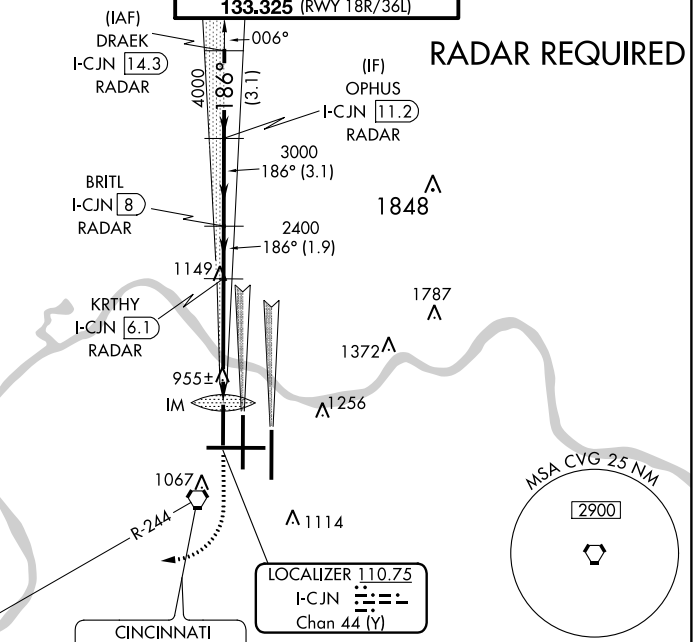
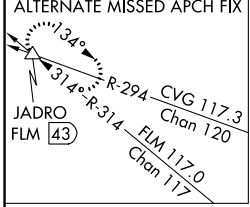
LOC/DME I-CJN 110.75 Chan 44 (Y)	APP CRS 186°	Rwy Idg 8000 TDZE 868 Apt Elev 896
--	------------------------	---

ILS RWY 18R (CAT II)

CINCINNATI/NORTHERN KENTUCKY INTL (CVG)

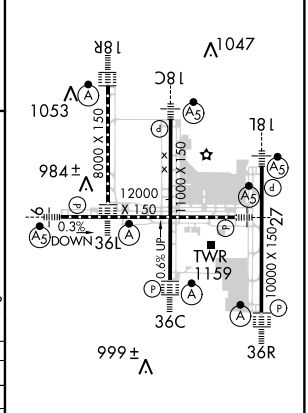
Simultaneous approach authorized with Rwy 18C and 18L. **MISSED APPROACH:** Climb to 1300 then climbing right turn to 3000 via CVG R-244 to AVIEW INT/ CVG 20 DME and hold.

D-ATIS ARR 134.375 DEP 135.3	CINCINNATI APP CON 119.7 254.25 (090°-269°) 123.875 363.15 (270°-089°)	CINCINNATI TOWER 118.975 360.85 (RWY 18L/36R) 118.3 (RWYS 18C/36C, 09/27) 133.325 (RWY 18R/36L)	GND CON 121.7	CLNC DEL 127.175
---	--	---	-------------------------	----------------------------



1.41	4.6 NM	1.9 NM	3.1 NM	3.1 NM
CATEGORY	A	B	C	D
S-ILS-18R	RA 113/12		100	DA 968

ELEV 896	D	TDZE 868
----------	----------	----------



CATEGORY II ILS - SPECIAL AIRCREW & AIRCRAFT CERTIFICATION REQUIRED

HIRL all Rwy's
TDZ/CL all Rwy's except 27

SE-1, 03 JAN 2019 to 31 JAN 2019

SE-1, 03 JAN 2019 to 31 JAN 2019

ILS RWY 18R (CAT II)