

# BNGLE FOUR DEPARTURE (RNAV)

AL-655 (FAA)

COVINGTON, KENTUCKY

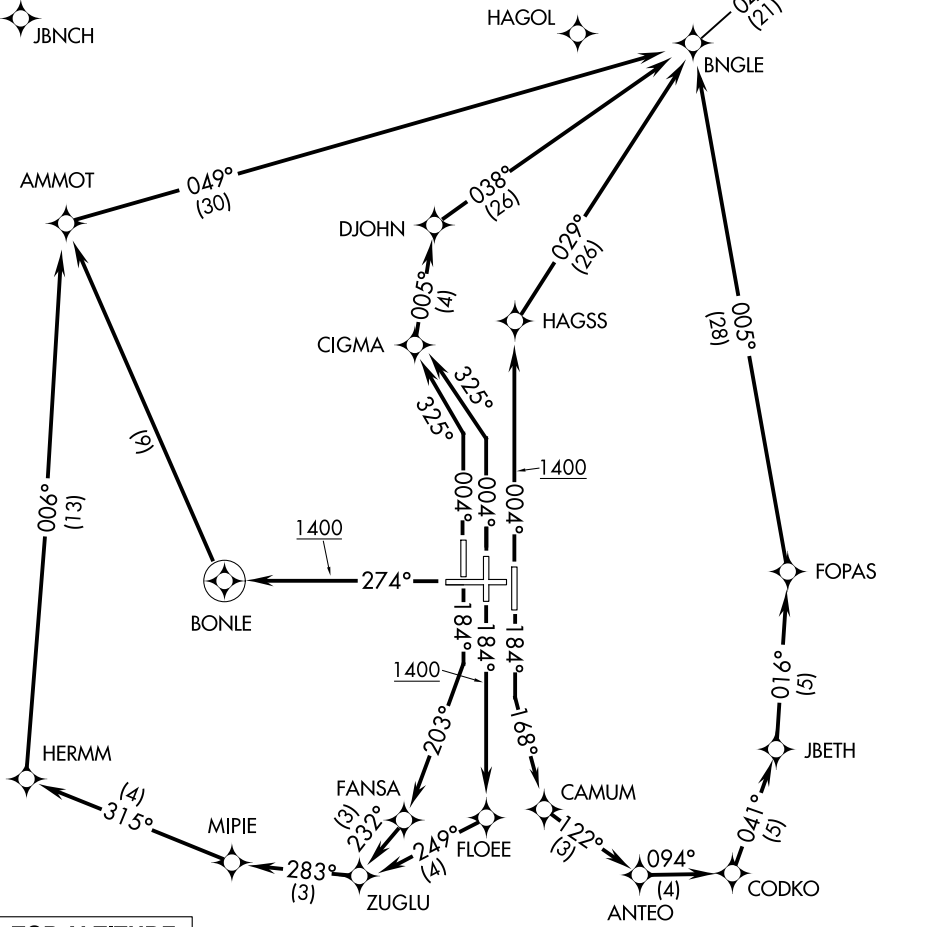
D-ATIS DEP 135.3  
 CLNC DEL  
 127.175  
 GND CON  
 121.7 (WEST) 121.3 (EAST)  
 CINCINNATI TOWER  
 118.3 (RWYS 18C/36C, 9/27)  
 118.975 360.85 (RWY 18L/36L)  
 133.325 (RWY 18R/36L)  
 CINCINNATI DEP CON  
 126.65 (001°-180°)  
 128.7 (181°-360°)

NOTE: If unable to accept climb rates, advise ATC on initial contact.  
 NOTE: DME/DME/IRU or GPS required.  
 NOTE: Radar required.  
 NOTE: RNAV 1.  
 NOTE: Accelerate to 250K, if unable, advise ATC.  
 NOTE: Transponder code will be issued via PDC or Cincinnati CLNC DEL.

DRYER DJB

FL180  
 \*3000  
 048°  
 (128)

RIKLE



**TOP ALTITUDE:**  
 (JETS/PROPS)  
 6000 4000

**TAKEOFF MINIMUMS:**  
 Rwy 9: NA-ATC.  
 Rwys 18L, 18C, 18R, 27, 36R, 36C, 36L: Standard with minimum climb of 500' per NM to 1400.

NOTE: Chart not to scale.

(NARRATIVE ON FOLLOWING PAGE)

SE-1, 03 JAN 2019 to 31 JAN 2019

SE-1, 03 JAN 2019 to 31 JAN 2019