

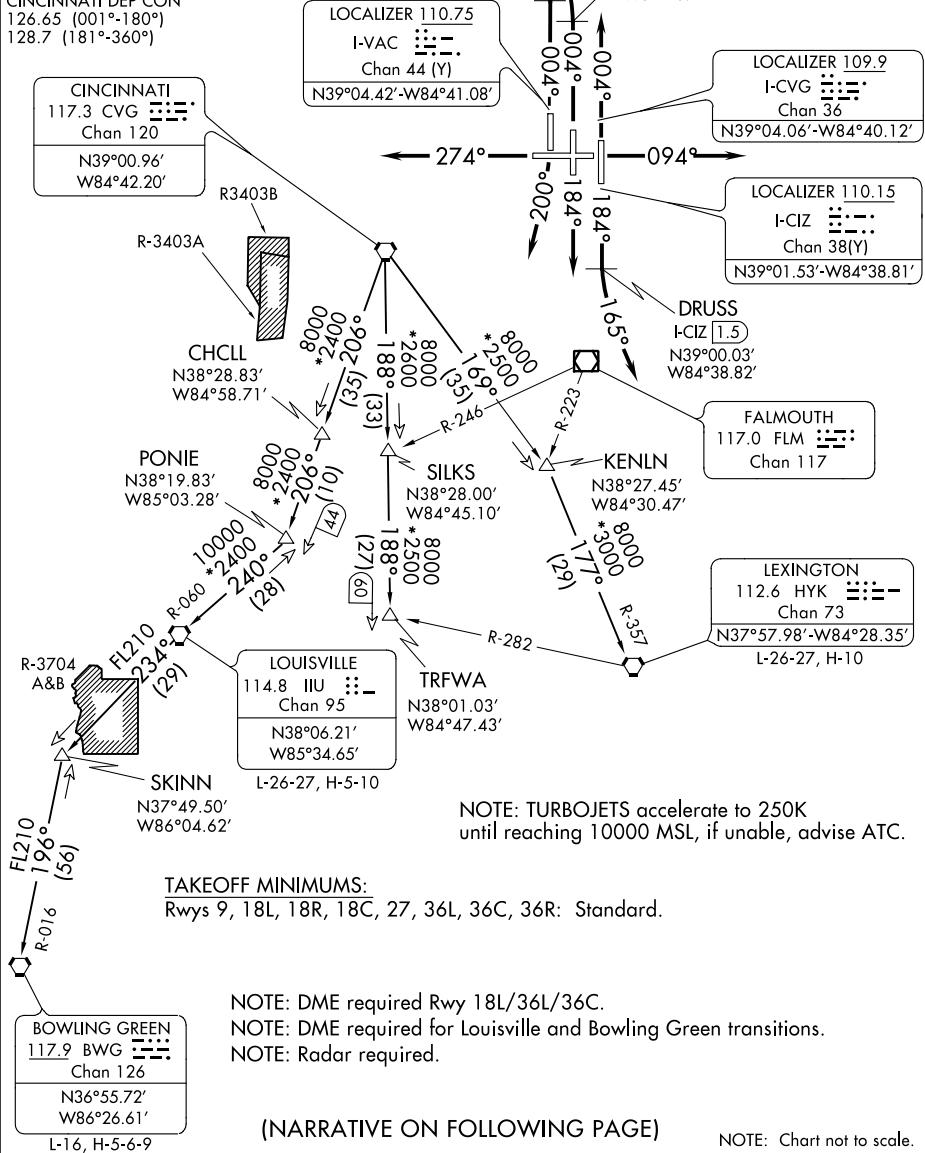
# BLUEGRASS TWO DEPARTURE

AL-655 (FAA)

COVINGTON, KENTUCKY

D-ATIS DEP 135.3  
 CLNC DEL  
 127.175  
 GND CON  
 121.7  
 CINCINNATI TOWER  
 118.3 360.85 (RWYS 18C/36C, 9/27)  
 118.975 360.85 (RWY 18L/36R)  
 133.325 360.85 (RWY 18R/36L)  
 CINCINNATI DEP CON  
 126.65 (001°-180°)  
 128.7 (181°-360°)

**TOP ALTITUDE:**  
 (JETS/PROPS)  
 6000 4000



SE-1, 03 JAN 2019 to 31 JAN 2019

SE-1, 03 JAN 2019 to 31 JAN 2019

**TAKEOFF MINIMUMS:**

Rwys 9, 18L, 18R, 18C, 27, 36L, 36C, 36R: Standard.

- NOTE: DME required Rwy 18L/36L/36C.
- NOTE: DME required for Louisville and Bowling Green transitions.
- NOTE: Radar required.

(NARRATIVE ON FOLLOWING PAGE)

NOTE: Chart not to scale.

# BLUEGRASS TWO DEPARTURE

COVINGTON, KENTUCKY