

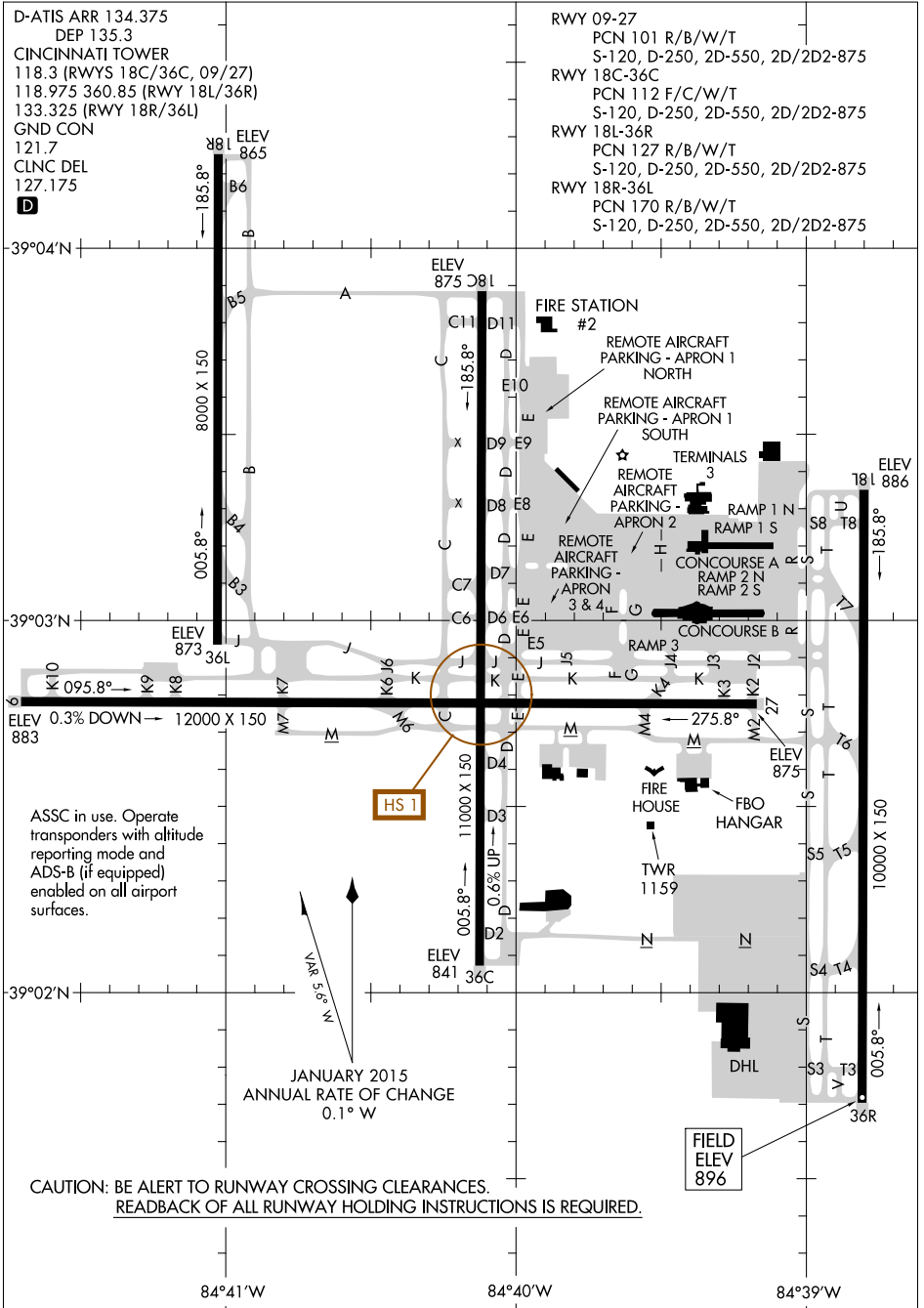
19003 **AIRPORT DIAGRAM** CINCINNATI/NORTHERN KENTUCKY INTL (CVG)  
 AL-655 (FAA) COVINGTON, KENTUCKY

D-ATIS ARR 134.375  
 DEP 135.3  
 CINCINNATI TOWER  
 118.3 (RWYS 18C/36C, 09/27)  
 118.975 360.85 (RWY 18L/36R)  
 133.325 (RWY 18R/36L)  
 GND CON  
 121.7  
 CLNC DEL  
 127.175  
**D**

RWY 09-27  
 PCN 101 R/B/W/T  
 S-120, D-250, 2D-550, 2D/2D2-875  
 RWY 18C-36C  
 PCN 112 F/C/W/T  
 S-120, D-250, 2D-550, 2D/2D2-875  
 RWY 18L-36R  
 PCN 127 R/B/W/T  
 S-120, D-250, 2D-550, 2D/2D2-875  
 RWY 18R-36L  
 PCN 170 R/B/W/T  
 S-120, D-250, 2D-550, 2D/2D2-875

SE-1, 03 JAN 2019 to 31 JAN 2019

SE-1, 03 JAN 2019 to 31 JAN 2019



ASSC in use. Operate transponders with altitude reporting mode and ADS-B (if equipped) enabled on all airport surfaces.

VAR 3.5° W  
 JANUARY 2015 ANNUAL RATE OF CHANGE 0.1° W

CAUTION: BE ALERT TO RUNWAY CROSSING CLEARANCES.  
READBACK OF ALL RUNWAY HOLDING INSTRUCTIONS IS REQUIRED.

**AIRPORT DIAGRAM** COVINGTON, KENTUCKY  
 19003 CINCINNATI/NORTHERN KENTUCKY INTL (CVG)