

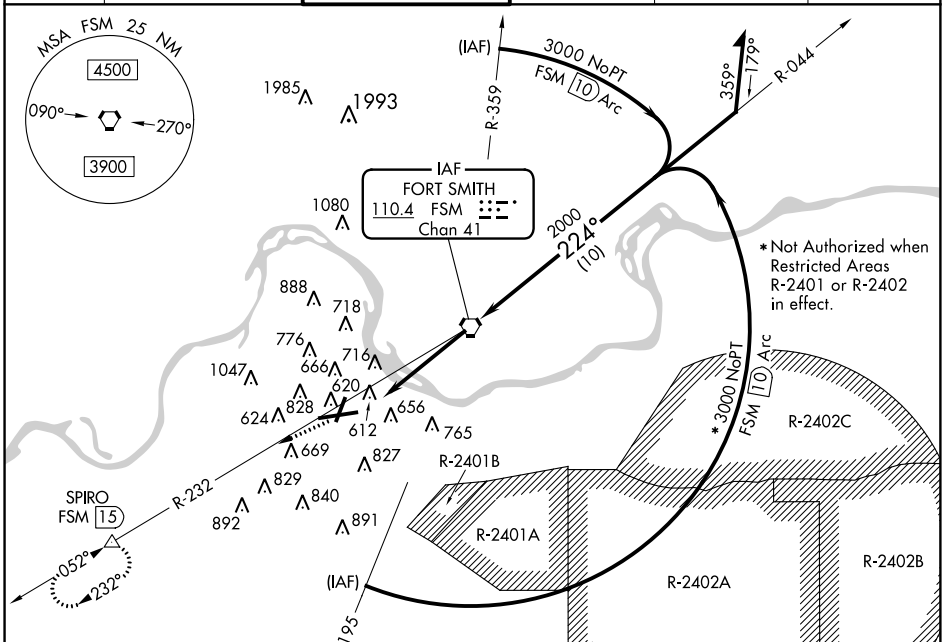
VORTAC FSM 110.4 Chan 41	APP CRS 224°	Rwy Idg 8000 TDZE 445 Apt Elev 469
---------------------------------------	------------------------	---

VOR or TACAN RWY 25

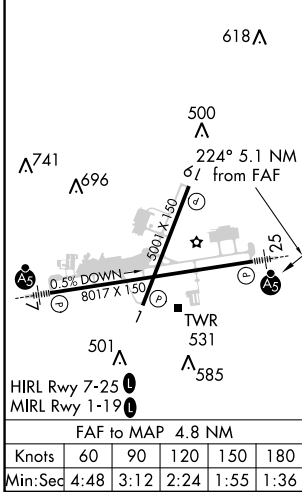
FORT SMITH RGNL (FSM)

<p>▲ Inoperative table does not apply. Circling NA NW of Rwys 7 and 19 for Cat E. Circling to Rwy 1 NA at night. Circling Cat E NA when R-2401B active.</p>	<p>MALSRS</p>	<p>MISSED APPROACH: Climb to 4000 via FSM R-232 to SPIRO Int/15 DME and hold.</p>
--	---------------	---

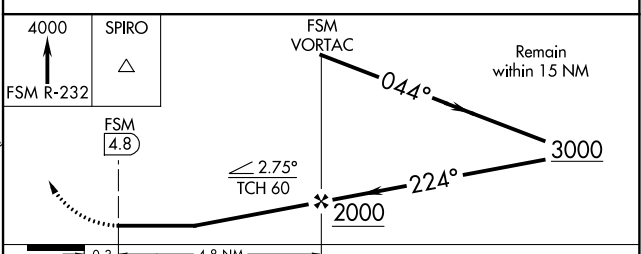
ATIS 126.3	RAZORBACK APP CON* 120.9 343.75	FORT SMITH TOWER* 118.3 (CTAF) 323.175	GND CON 121.9 275.8	CLNC DEL 133.85 278.3	UNICOM 122.95
----------------------	---	---	-------------------------------	---------------------------------	-------------------------



ELEV 469	D	TDZE 445
----------	----------	----------



DME REQUIRED



CATEGORY	A	B	C	D	E
S-25	980-1	535 (600-1)	980-1½ 535 (600-1½)	980-1¾ 535 (600-1¾)	980-2 535 (600-2)
CIRCLING	1140-1	671 (700-1)	1140-2 671 (700-2)	1140-2¼ 671 (700-2¼)	1200-2½ 731 (800-2½)

SC-1, 03 JAN 2019 to 31 JAN 2019

SC-1, 03 JAN 2019 to 31 JAN 2019