

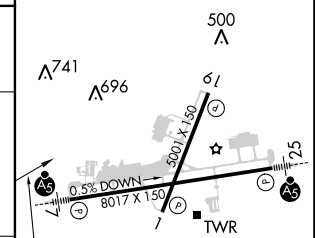
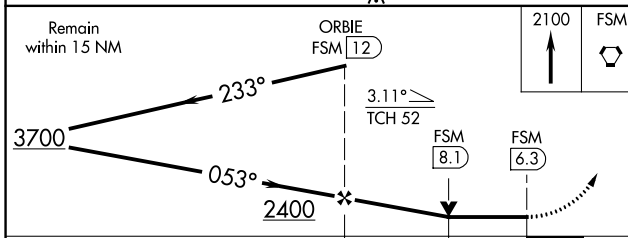
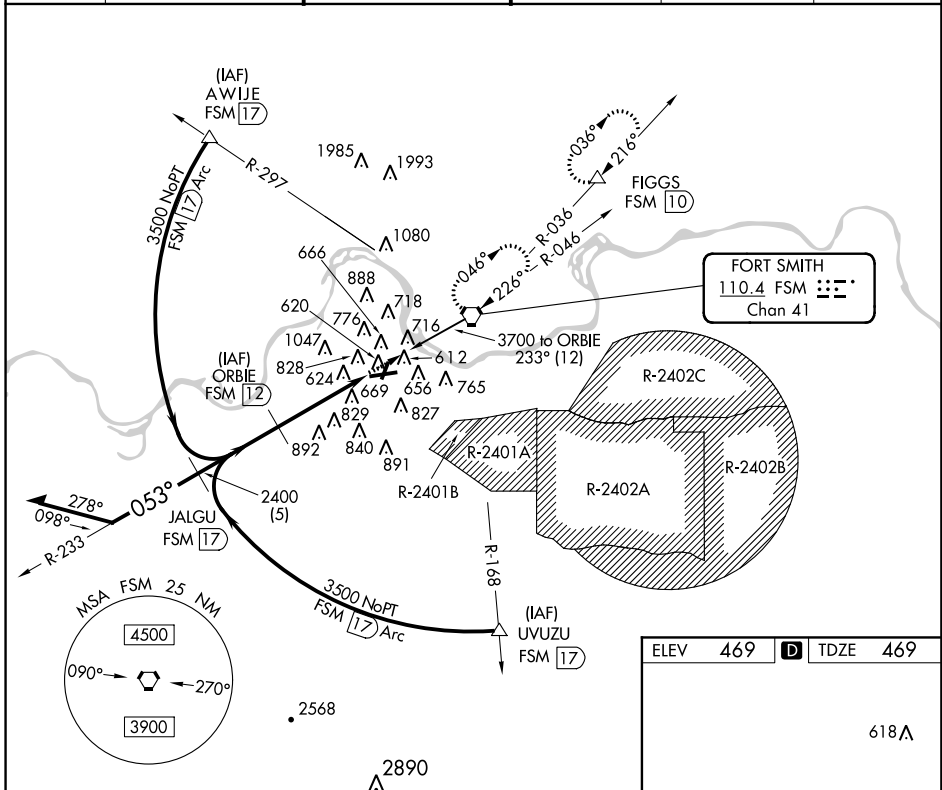
VORTAC FSM 110.4 Chan 41	APP CRS 053°	Rwy Idg TDZE 469 Apt Elev 469
--	------------------------	---

VOR/DME or TACAN RWY 7

FORT SMITH RGNL (FSM)

Inoperative table does not apply. Circling not authorized NW of Rws 7 and 19 for Cat E. Circling to Rwy 1 NA at night. Circling Cat E NA when R-2401B active.	MALS R	MISSED APPROACH: Climb to 2100 direct FSM VORTAC and hold. (TACAN aircraft climbing left turn to 4000 direct FSM VORTAC then via R-036 to FIGGS 10 DME and hold northeast, right turn 216° inbound.)

ATIS 126.3	RAZORBACK APP CON * 120.9 343.75	FORT SMITH TOWER * 118.3(CTAF) 323.175	GND CON 121.9 275.8	CLNC DEL 133.85 278.3	UNICOM 122.95
----------------------	--	--	-------------------------------	---------------------------------	-------------------------



CATEGORY	A	B	C	D	E
S-7	1080-1 611 (700-1)		1080-1¾ 611 (700-1¾)	1080-2 611 (700-2)	1080-2¼ 611 (700-2¼)
CIRCLING	1140-1 671 (700-1)		1140-2 671 (700-2)	1140-2¼ 671 (700-2¼)	1200-2½ 731 (800-2½)

ELEV 469	TDZE 469
HIRL Rwy 7-25 MIRL Rwy 1-19	

SC-1, 03 JAN 2019 to 31 JAN 2019

SC-1, 03 JAN 2019 to 31 JAN 2019