

WAAS CH 58217 W01A	APP CRS 016°	Rwy Idg TDZE Apt Elev	5001 449 469
---------------------------------	------------------------	-----------------------------	---

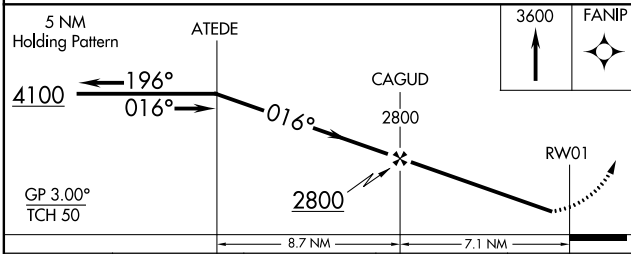
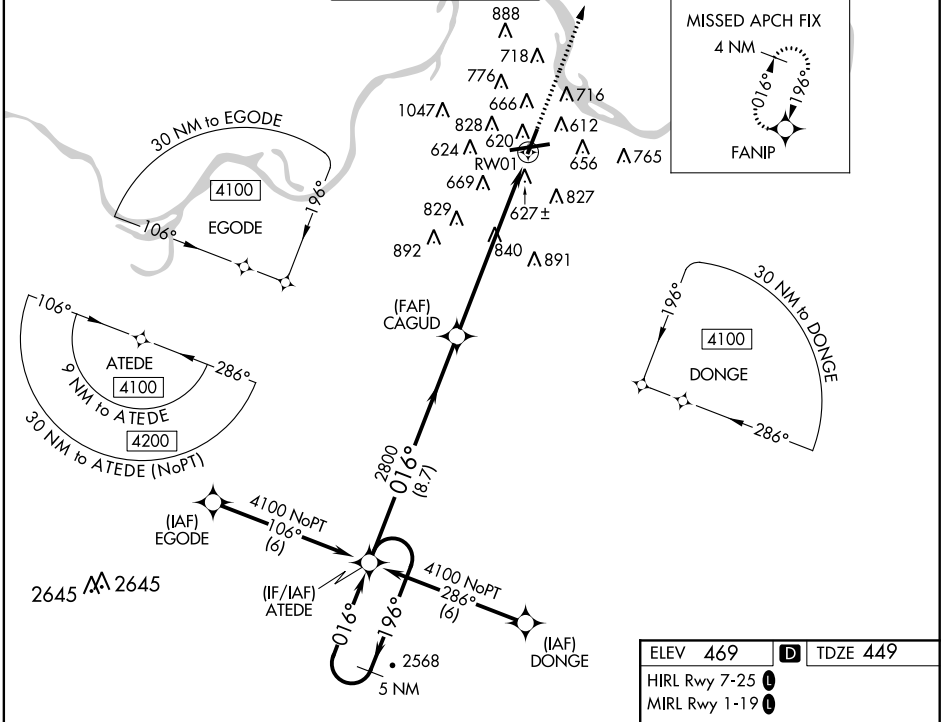
RNAV (GPS) RWY 1

FORT SMITH RGNL (FSM)

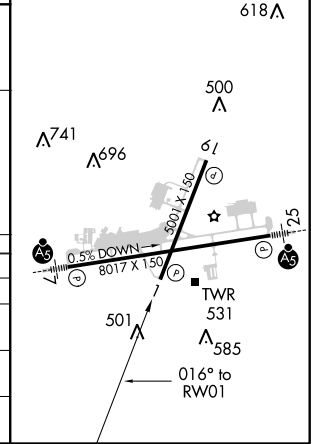
▼ Straight-in minimums NA at night. Circling to Rwy 1 NA at night. For uncompensated Baro-VNAV systems, LNAV/VNAV NA below -15°C (5°F) or above 48°C (118°F).
▲ DME/DME RNP-0.3 NA. Visibility reduction by helicopters NA.

MISSED APPROACH: Climb to 3600 direct FANIP and hold, continue climb-in-hold to 3600.

ATIS 126.3	RAZORBACK APP CON * 120.9 343.75	FORT SMITH TOWER * 118.3 (CTAF) 323.175	GND CON 121.9 275.8	CLNC DEL 133.85 278.3	UNICOM 122.95
----------------------	--	---	-------------------------------	---------------------------------	-------------------------



ELEV 469	D TDZE 449
HIRL Rwy 7-25	1
MIRL Rwy 1-19	1



CATEGORY	A	B	C	D
LPV DA		705-1	256 (300-1)	
LNAV/VNAV DA		942-1¾	493 (500-1¾)	
LNAV MDA	1160-1 711 (700-1)		1160-2 711 (700-2)	1160-2¼ 711 (700-2¼)
CIRCLING	1160-1 691 (700-1)		1160-2 691 (700-2)	1160-2¼ 691 (700-2¼)

SC-1, 03 JAN 2019 to 31 JAN 2019

SC-1, 03 JAN 2019 to 31 JAN 2019