

LOC I-GKV 111.3	APP CRS 076°	Rwy Idg TDZE Apt Elev	8000 469 469
---------------------------	------------------------	-----------------------------	---

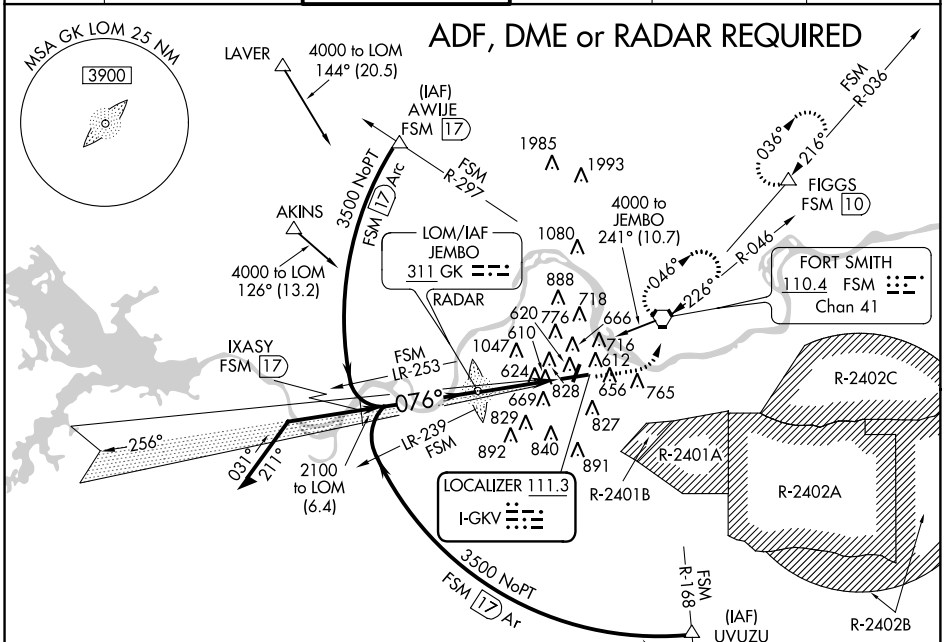
ILS or LOC RWY 7

FORT SMITH RGNL (FSM)

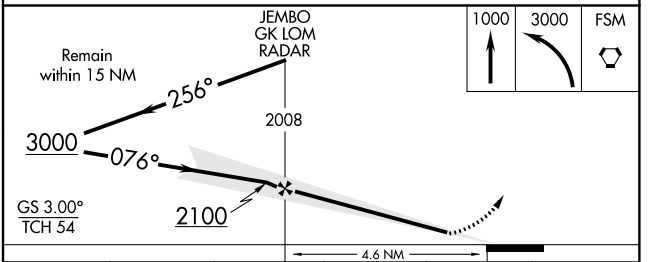
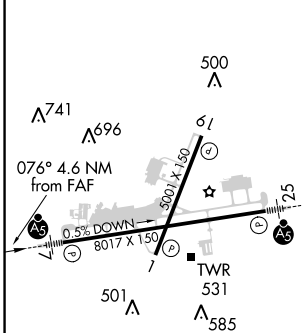
ASR Circling NA NW of Rwy 7 and 19 for Cat E. Circling to Rwy 1 NA at night.
Circling Cat E NA when R-2401B active.

MALSR MISSED APPROACH: Climb to 1000, then climbing left turn to 3000 direct FSM VORTAC and hold. (TACAN aircraft continue climb to 4000 via R-036 to FIGGS 10 DME and hold, NE, RT, 216° inbound.)

ATIS 126.3	RAZORBACK APP CON ★ 120.9 343.75	FORT SMITH TOWER ★ 118.3 (CTAF) 323.175	GND CON 121.9 275.8	CLNC DEL 133.85 278.3	UNICOM 122.95
----------------------	--	--	-------------------------------	---------------------------------	-------------------------



ELEV 469	D TDZE 469
	618



CATEGORY	A	B	C	D	E
S-ILS 7	669-1/2 200 (200-1/2)				
S-LOC 7	880-1/2	411 (500-1/2)	880-3/4	411 (500-3/4)	880-1 411 (500-1)
CIRCLING	1140-1	671 (700-1)	1140-2 671 (700-2)	1140-2 1/4 671 (700-2 1/4)	1200-2 1/2 731 (800-2 1/2)

SC-1, 03 JAN 2019 to 31 JAN 2019

SC-1, 03 JAN 2019 to 31 JAN 2019