

LOC I-FSM 111.3	APP CRS 256°	Rwy Idg TDZE Apt Elev	8000 446 469
---------------------------	------------------------	-----------------------------	---

ILS or LOC RWY 25

FORT SMITH RGNL (FSM)

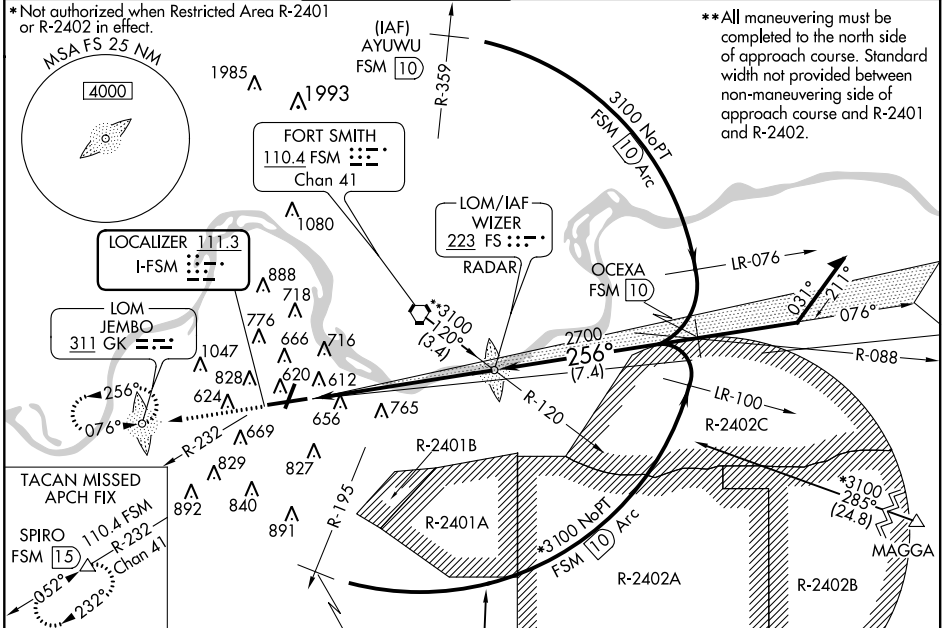
ASR Circling not authorized NW of Rwy 7 and 19 for Cat E. Circling to Rwy 1 NA at night. # Visibility Cat A/B/C/D RVR 1800 authorized with the use of FD or AP or HUD to DA. Circling Cat E NA when R-2401B active.

MALSR MISSED APPROACH: Climb to 2500 direct JEMBO LOM and hold. (TACAN aircraft climb to 1200 then climbing left, then to 4000 via FSM R-232 to SPIRO Int/1.5 DME and hold southwest, right turn, 052° inbound.)

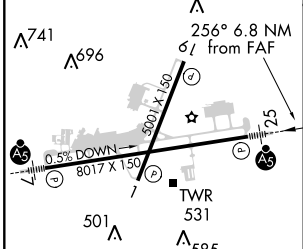
ATIS 126.3	RAZORBACK APP CON* 120.9 343.75	FORT SMITH TOWER* 118.3 (CTAF) 0 323.175	GND CON 121.9 275.8	CLNC DEL 133.85 278.3	UNICOM 122.95
----------------------	---	--	-------------------------------	---------------------------------	-------------------------

*Not authorized when Restricted Area R-2401 or R-2402 in effect.

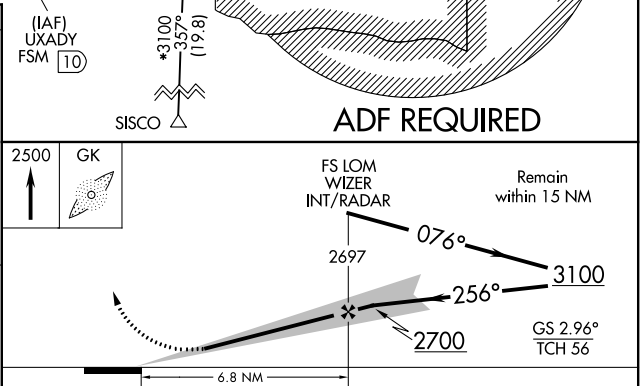
**All maneuvering must be completed to the north side of approach course. Standard width not provided between non-maneuvering side of approach course and R-2401 and R-2402.



ELEV 469	D	TDZE 446
618 A		



HIRL Rwy 7-25	MIRL Rwy 1-19				
FAF to MAP 6.8 NM					
Knots	60	90	120	150	180
Min:Sec	6:48	4:32	3:24	2:43	2:16



CATEGORY	A	B	C	D	E
S-ILS 25	# 646 / 24 200 (200-1/2)				
S-LOC 25	960/24	514 (500-1/2)	960/50 514 (500-1)	960/60	514 (500-1 1/4)
CIRCLING	1140-1 671 (700-1)		1140-2 671 (700-2)	1140-2 1/4 671 (700-2 1/4)	1200-2 1/2 731 (800-2 1/2)

SC-1, 03 JAN 2019 to 31 JAN 2019

SC-1, 03 JAN 2019 to 31 JAN 2019