

VORTAC FSM <b>110.4</b> Chan <b>41</b>	APCH CRS <b>226°</b>	Rwy Idg THRE <b>444</b> Arpt Elev <b>469</b>
--	-------------------------	--

JAL-631 [USAF]

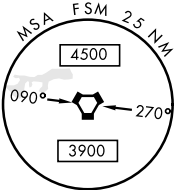
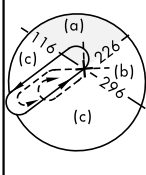
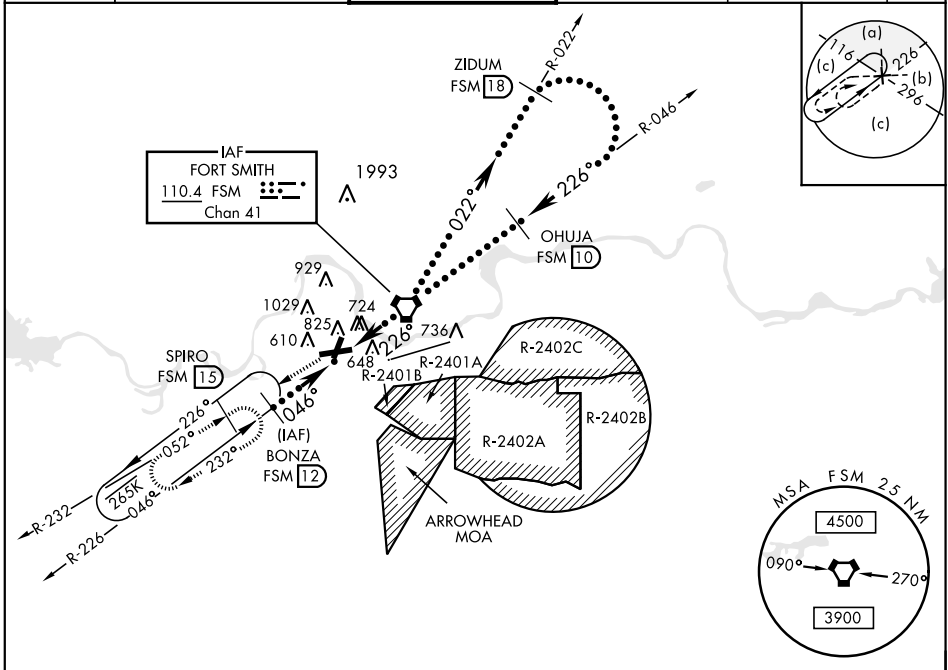
FORT SMITH REGIONAL (KFMS)

▼ \* Circling NA NW Rwy 7 and 19 for CAT E.  
Circling NA for CAT E when R-2401B is active.  
Circling to Rwy 1 NA at night.



MISSED APPROACH: Climb to 4000 on FSM  
VORTAC R-232 to SPIRO (FSM R-232/15 DME)  
and hold, continue climb in hold to 4000.

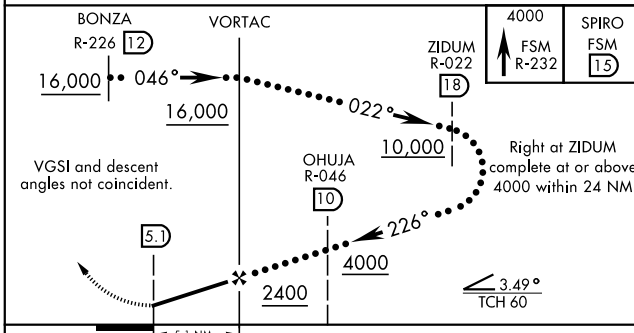
ATIS ★ <b>126.3</b>	RAZORBACK APP CON <b>120.9 343.75</b>	FORT SMITH TOWER ★ <b>118.3 (CTAF) 0 323.175</b>	GND CON <b>121.9 275.8</b>	CLNC DEL <b>133.85 278.3</b>	ASR
------------------------	--	---	-------------------------------	---------------------------------	-----



SC-1, 03 JAN 2019 to 31 JAN 2019

SC-1, 03 JAN 2019 to 31 JAN 2019

EMERG SAFE ALT 100 NM 4500



ELEV 469	THRE 444
----------	----------

CATEGORY	C	D	E
S-25	980-1½	536 (600-1½)	
CIRCLING *	1140-2 671 (700-2)	1140-2 ¼ 671 (700-2¼)	1260-2 ¾ 791 (800-2¾)

