


WAAS CH <b>73020</b> <b>W17A</b>	APP CRS <b>174°</b>	Rwy Idg TDZE Apt Elev	<b>8600</b> <b>470</b> <b>470</b>
--	------------------------	-----------------------------	---

# RNAV (GPS) RWY 17L

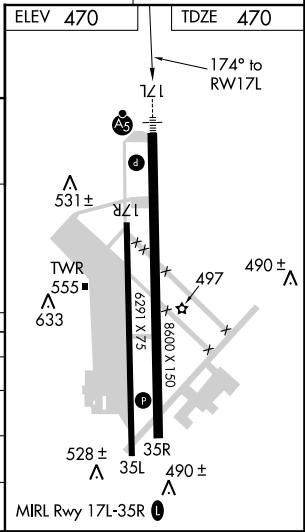
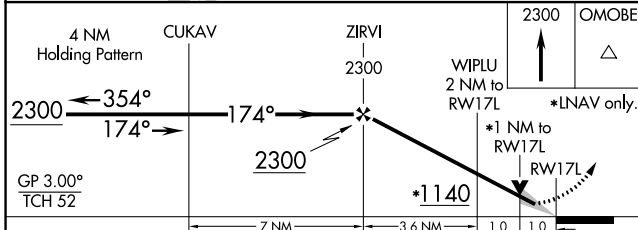
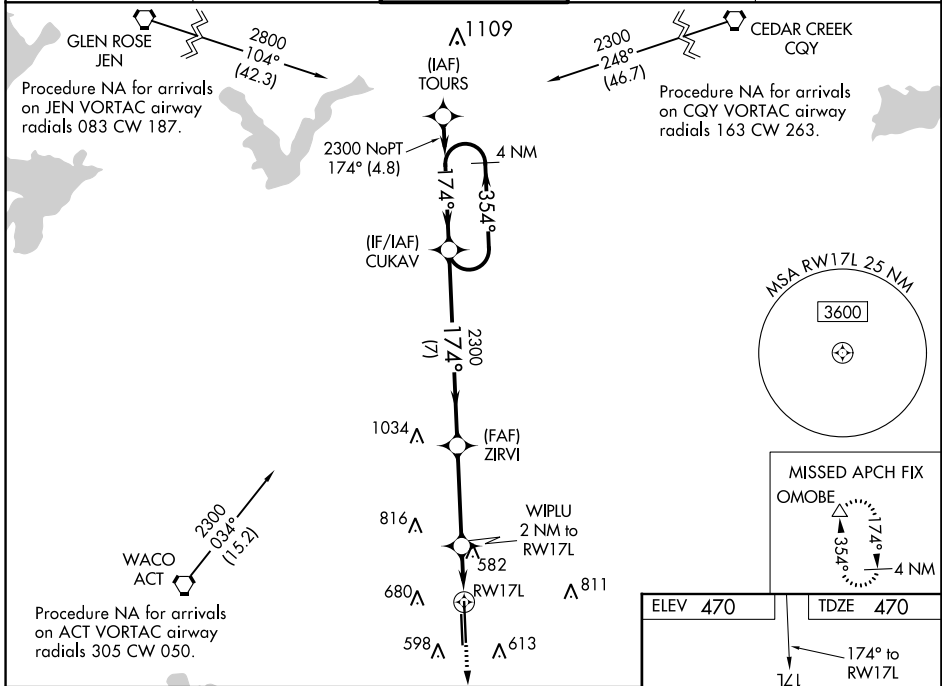
TSTC WACO (CNW)

**ASR** Baro-VNAV NA when using Waco Rgnl altimeter setting. DME/DME RNP-0.3 NA. VDP NA with Waco Regl altimeter setting. When local altimeter setting not received, use Waco Rgnl altimeter setting and increase all DA 26 feet and all MDA 40 feet, increase LNAV/VNAV all Cats and LNAV Cats C/D visibility 1/8 mile and Circling Cat C visibility 1/4 mile. For uncompensated Baro-VNAV systems, LNAV/VNAV NA below -15°C (5°F) or above 54°C (130°F).

**MALS** 

**MISSED APPROACH:**  
Climb to 2300 direct OMOBE and hold.

AWOS-3 <b>134.225</b>	WACO APP CON ★ <b>127.65 227.125</b>	TSTC TOWER ★ <b>124.0 (CTAF) 255.7</b>	GND CON <b>121.7 0</b>	UNICOM <b>122.95</b>
--------------------------	---	---	---------------------------	-------------------------



CATEGORY	A	B	C	D
LPV DA		670-1/2	200 (200-1/2)	
LNAV/VNAV DA		818-5/8	348 (400-5/8)	
LNAV MDA	840-1/2	370 (400-1/2)	840-5/8	370 (400-5/8)
CIRCLING	940-1 470 (500-1)	960-1 490 (500-1)	1040-1 1/2 570 (600-1 1/2)	1040-2 570 (600-2)

SC-3, 03 JAN 2019 to 31 JAN 2019

SC-3, 03 JAN 2019 to 31 JAN 2019