

ARRIVAL ROUTE DESCRIPTION

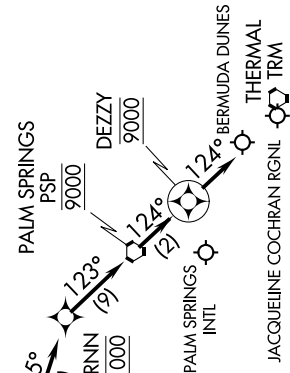
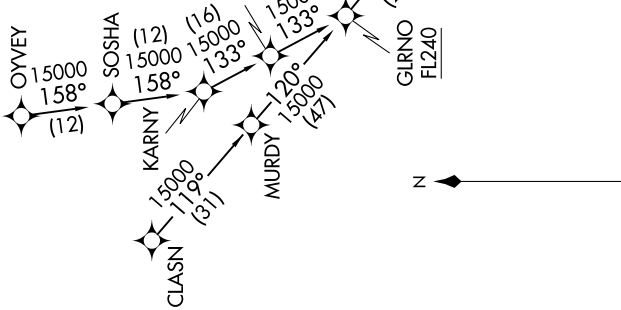
CLASN TRANSITION (CLASN.SIZLR3)  
OYVEY TRANSITION (OYVEY.SIZLR3)

LANDING ALL AIRPORTS: From SIZLR on track 103° to MXIMO, then on track 103° to HITOP, then on track 106° to cross PZUKY at 16000, then on track 106° to cross BITTY at 16000, then on track 106° to cross MORON at 14000, then on track 095° to cross FERNIN at 11000, then on track 123° to cross PSP VORTAC at 9000, then on track 124° to cross DEZZY at 9000, then on track 124°. Expect RADAR vectors to final approach course.

LOST COMMUNICATIONS

Proceed direct TRM VORTAC and execute the VOR or GFS-B approach.

- PALM SPRINGS INTL ATIS 124.65
- SOCAL APP CON 134.0 278.3
- PALM SPRINGS INTL TOWER ★ 119.7 377.05
- BERMUDA DUNES UNICOM 122.8
- JACQUELINE COCHRAN UNICOM 123.0



- NOTE: RADAR required.
- NOTE: RNAV 1.
- NOTE: DME/DME/IRU or GPS required.
- NOTE: Turbojet and turboprop aircraft only.
- NOTE: Chart not to scale.

SW-3, 03 JAN 2019 to 31 JAN 2019

SW-3, 03 JAN 2019 to 31 JAN 2019