

RNAV (GPS) RWY 1

APCH CRS 010°	Rwy ldg 12,400 THRE 837 Arpt Elev 871
-------------------------	--

AL-496 [USAF]

WHITEMAN AFB (KSZL)

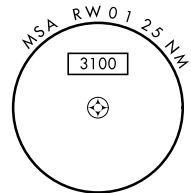
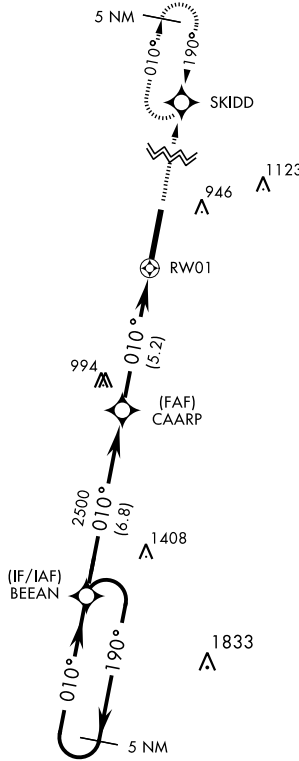
▼ * When ALS inop, increase CAT AB RVR to 55 and vis to 1 mile, CAT CDE vis to 1½ miles.
** Circling not authorized W of Rwy 1-19.



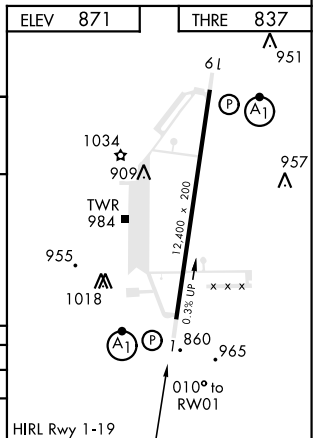
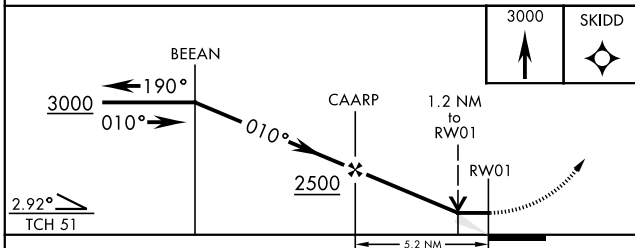
MISSED APPROACH: Climb to 3000 direct SKIDD and hold.

ATIS 118.725 239.025	WHITEMAN APP CON 127.45 284.0	WHITEMAN TOWER ★ 132.4 318.8	GND CON 128.275 275.8	CLNC DEL 121.75 335.8	ASR
--------------------------------	---	--	---------------------------------	---------------------------------	-----

DME/DME RNP 0.3 N/A.



EMERG SAFE ALT 100 NM 4700



CATEGORY	A	B	C	D	E
LNVA MDA *	1260/24	423 (400-½)	1260/40	423 (400-¾)	
** CIRCLING	1300-1 429 (500-1)	1340-1 469 (500-1)	1340-1½ 469 (500-1½)	1460-2	589 (600-2)

RNAV (GPS) RWY 1

NC-3, 03 JAN 2019 to 31 JAN 2019

NC-3, 03 JAN 2019 to 31 JAN 2019