

VORTAC GCK <b>113.3</b> Chan 80	APP CRS <b>344°</b>	Rwy Idg TDZE Apt Elev	<b>7299</b> <b>2885</b> <b>2891</b>
---------------------------------------	------------------------	-----------------------------	---

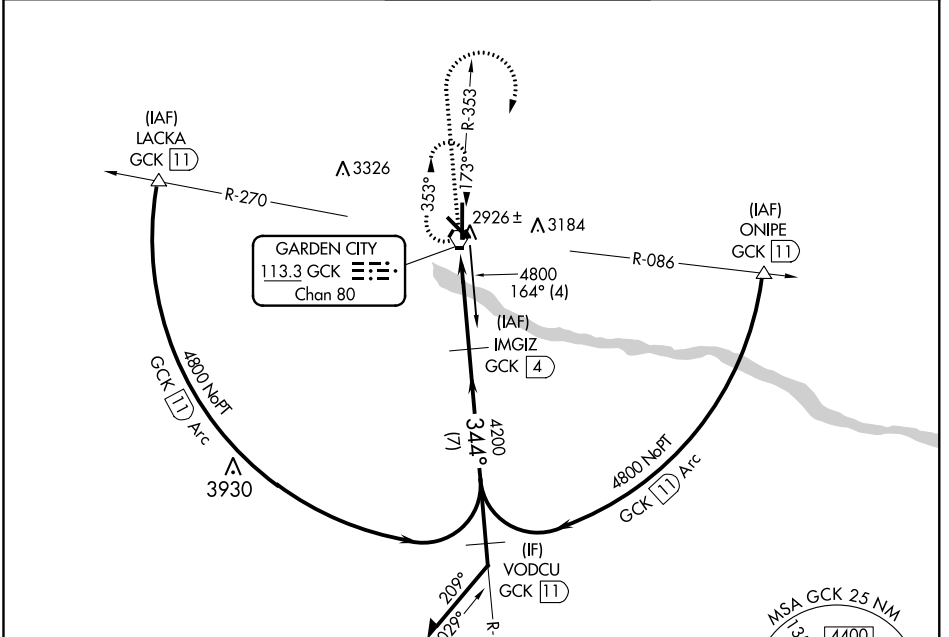
# VOR/DME RWY 35

GARDEN CITY RGNL (GCK)

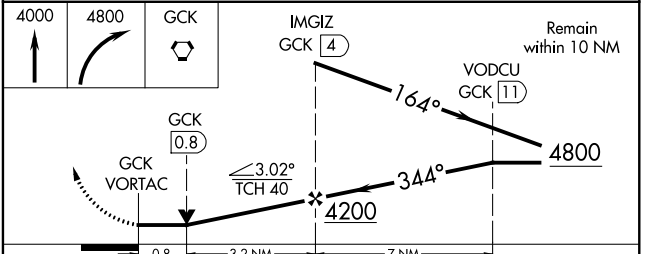
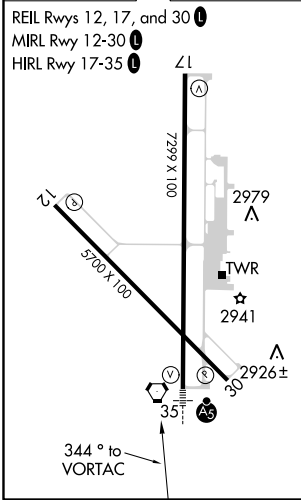
**⚠** Inoperative table does not apply to S-35 Cat D visibility. If local altimeter setting not received, use Dodge City Rgnl altimeter setting and increase all MDAs 140 feet. VDP NA when using Dodge City Rgnl setting.

**⚠** MISSED APPROACH: Climb to 4000, then climbing right turn to 4800 direct GCK VORTAC and hold.

ASOS <b>121.325</b>	KANSAS CITY CENTER <b>125.2 269.4</b>	GARDEN CITY TOWER * <b>118.15 (CTAF) 0 254.4</b>	GND CON <b>119.0</b>	UNICOM <b>122.95</b>
------------------------	--	---	-------------------------	-------------------------



ELEV 2891	<b>D</b>	TDZE 2885
-----------	----------	-----------



CATEGORY	A	B	C	D
S-35	3180-½ 295 (300-½)			3180-1 295 (300-1)
CIRCLING	3280-1 389 (400-1)	3360-1 469 (500-1)	3360-1½ 469 (500-1½)	3460-2 569 (600-2)

NC-2, 03 JAN 2019 to 31 JAN 2019

NC-2, 03 JAN 2019 to 31 JAN 2019