

VORTAC GCK <b>113.3</b> Chan <b>80</b>	APP CRS <b>286°</b>	Rwy Idg TDZE Apt Elev <b>5700</b> <b>2885</b> <b>2891</b>
--	------------------------	--

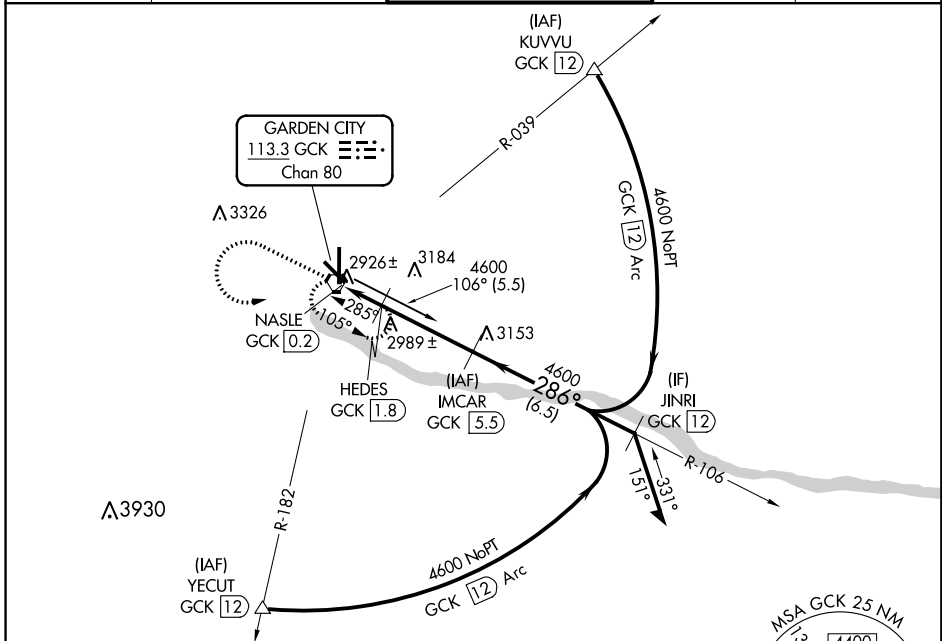
# VOR/DME RWY 30

GARDEN CITY RGNL (GCK)

**▽** If local altimeter setting not received, use Dodge City  
**▲** Rgnl altimeter setting and increase all MDAs 140 feet.

MISSED APPROACH: Climb to 4000 then climbing left turn to 4600 direct GCK VORTAC and hold.

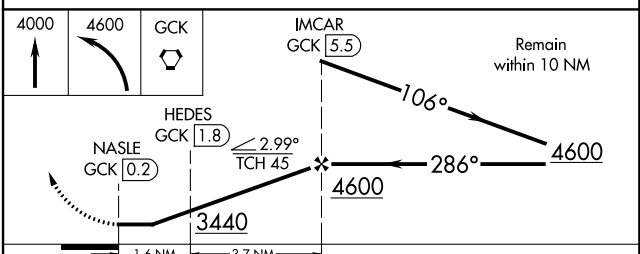
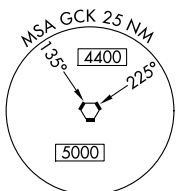
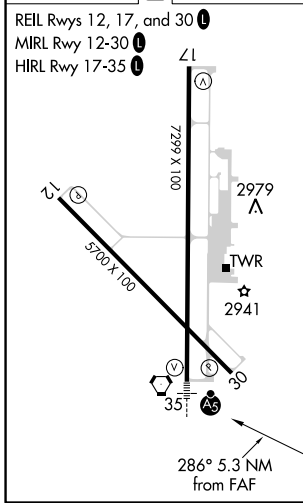
ASOS <b>121.325</b>	KANSAS CITY CENTER <b>125.2 269.4</b>	GARDEN CITY TOWER ★ <b>118.15 (CTAF) 0 254.4</b>	GND CON <b>119.0</b>	UNICOM <b>122.95</b>
------------------------	--	---	-------------------------	-------------------------



NC-2, 03 JAN 2019 to 31 JAN 2019

NC-2, 03 JAN 2019 to 31 JAN 2019

ELEV 2891	<b>D</b>	TDZE 2885
-----------	----------	-----------



CATEGORY	A	B	C	D
S-30	3240-1 355 (400-1)		3240-1¼ 355 (400-1¼)	
CIRCLING	3320-1 429 (500-1)	3360-1 469 (500-1)	3360-1½ 469 (500-1½)	3460-2 569 (600-2)