

WAAS CH <b>77803</b> <b>W12A</b>	APP CRS <b>126°</b>	Rwy Idg TDZE Apt Elev	<b>5700</b> <b>2891</b> <b>2891</b>
--	------------------------	-----------------------------	---

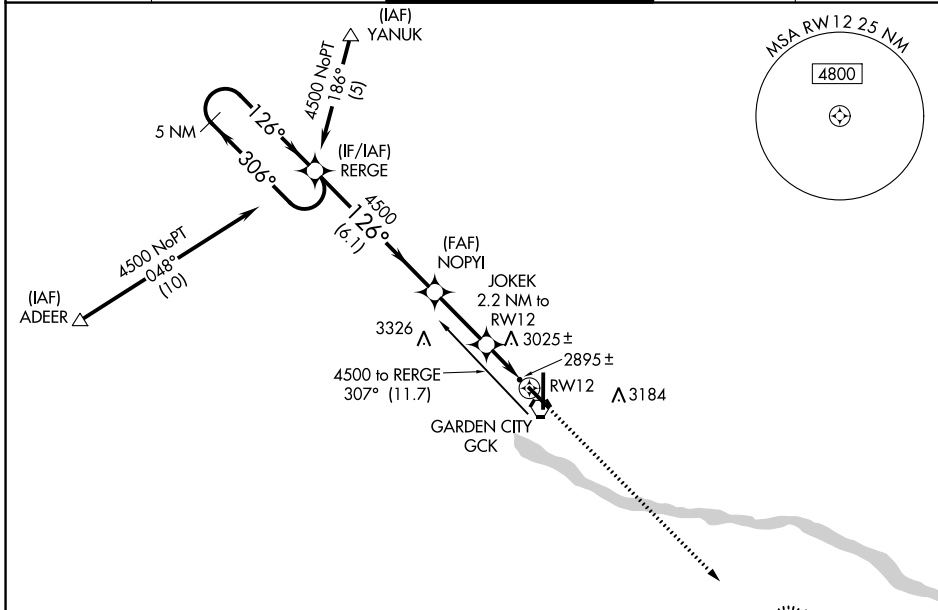
# RNAV (GPS) RWY 12

GARDEN CITY RGNL (GCK)

**▽** If local altimeter setting not received, use Dodge City Rgnl altimeter setting and increase all DAs 128 feet and all MDAs 140 feet. Baro-VNAV NA when using Dodge City Rgnl altimeter setting.  
**▲** For uncompensated Baro-VNAV systems, LNAV/VNAV NA below -20°C (-4°F) or above 43°C (109°F). DME/DME RNP-0.3 NA. VDP NA when using Dodge City Rgnl altimeter setting.

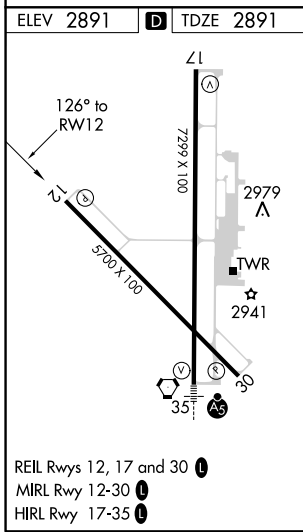
**MISSED APPROACH:**  
Climb to 4600 direct ORECA and hold.

ASOS <b>121.325</b>	KANSAS CITY CENTER <b>125.2 269.4</b>	GARDEN CITY TOWER* <b>118.15 (CTAF) 0 254.4</b>	GND CON <b>119.0</b>	UNICOM <b>122.95</b>
------------------------	--	--	-------------------------	-------------------------



NC-2, 03 JAN 2019 to 31 JAN 2019

NC-2, 03 JAN 2019 to 31 JAN 2019



5 NM Holding Pattern		3930	ORECA	5 NM
4500	← 306°	→ 126°	→ 126°	→ 126°
GP 3.00°	TCH 47	4500	3620	*LNNAV only
		6.1 NM	2.6 NM	1.1 NM 1.1 NM
REGERE	NOPI	JOKEK 2.2 NM to RW12	ORECA	4600
		*1.1 NM to RW12		
CATEGORY	A	B	C	D
LPV DA		3141-1	250 (300-1)	
LNNAV/VNAV DA		3184-1	293 (300-1)	
LNNAV MDA	3280-1	389 (400-1)		3280-1½ 389 (400-1½)
CIRCLING	3280-1 389 (400-1)	3360-1 469 (500-1)	3360-1½ 469 (500-1½)	3460-2 569 (600-2)