

ILS RWY 35

GARDEN CITY RGNL (GCK)

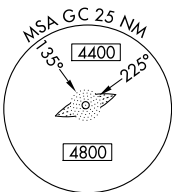
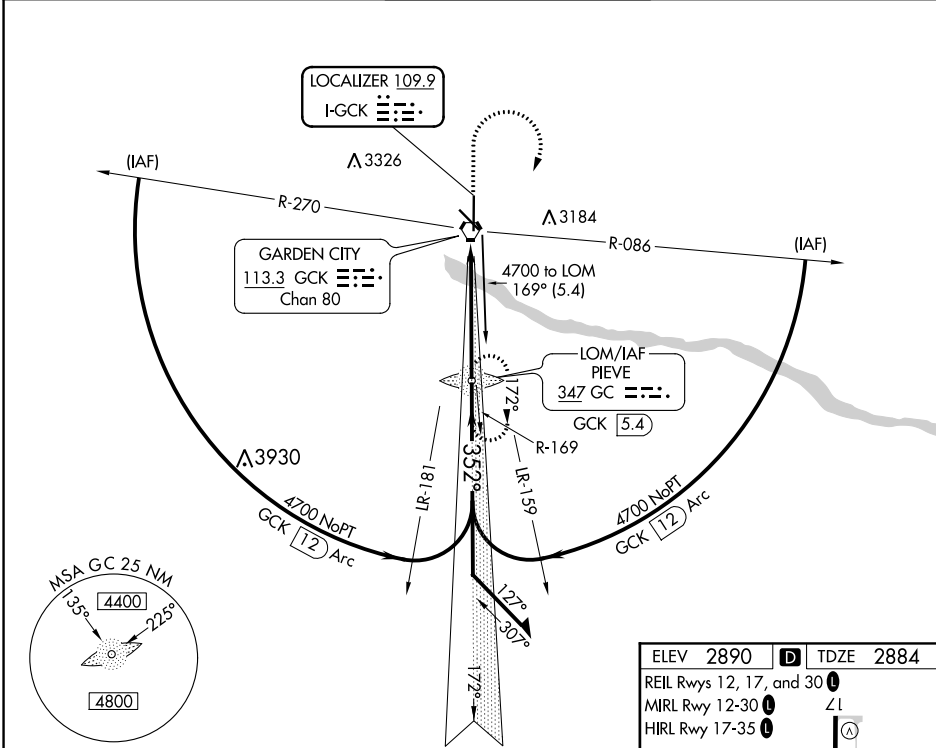
LOC I-GCK 109.9	APP CRS 352°	Rwy Idg 7299
		TDZE 2884
		Apt Elev 2890

▽ For inoperative MALS, increase S-LOC 35 Cat D visibility to 1 mile.

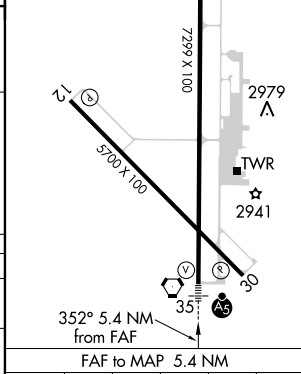
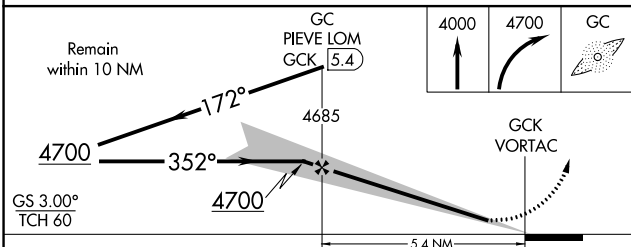


MISSED APPROACH: Climb to 4000, then climbing right turn to 4700 direct PIEVE LOM and hold.

ASOS 121.325	KANSAS CITY CENTER 125.2 269.4	GARDEN CITY TOWER* 118.15 (CTAF) 0 254.4	GND CON 119.0	UNICOM 122.95
------------------------	--	--	-------------------------	-------------------------



ELEV 2890	D	TDZE 2884
REIL Rwy 12, 17, and 30	0	Z1
MIRL Rwy 12-30	0	
HIRL Rwy 17-35	0	



CATEGORY	A	B	C	D
S-ILS-35	3084-½		200 (200-½)	
S-LOC-35	3200-½		316 (400-½)	
CIRCLING	3280-1 390 (400-1)	3340-1 450 (500-1)	3340-1½ 450 (500-1½)	3440-2 550 (600-2)

Knots	60	90	120	150	180
Min:Sec	5:24	3:36	2:42	2:10	1:48

NC-2, 03 JAN 2019 to 31 JAN 2019

NC-2, 03 JAN 2019 to 31 JAN 2019