

WICHITA, KANSAS

# RNAV (GPS) RWY 19R

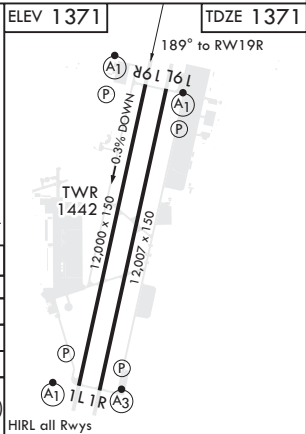
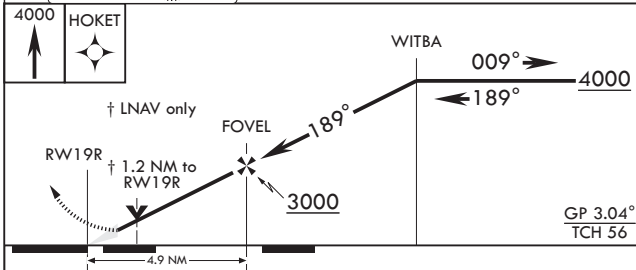
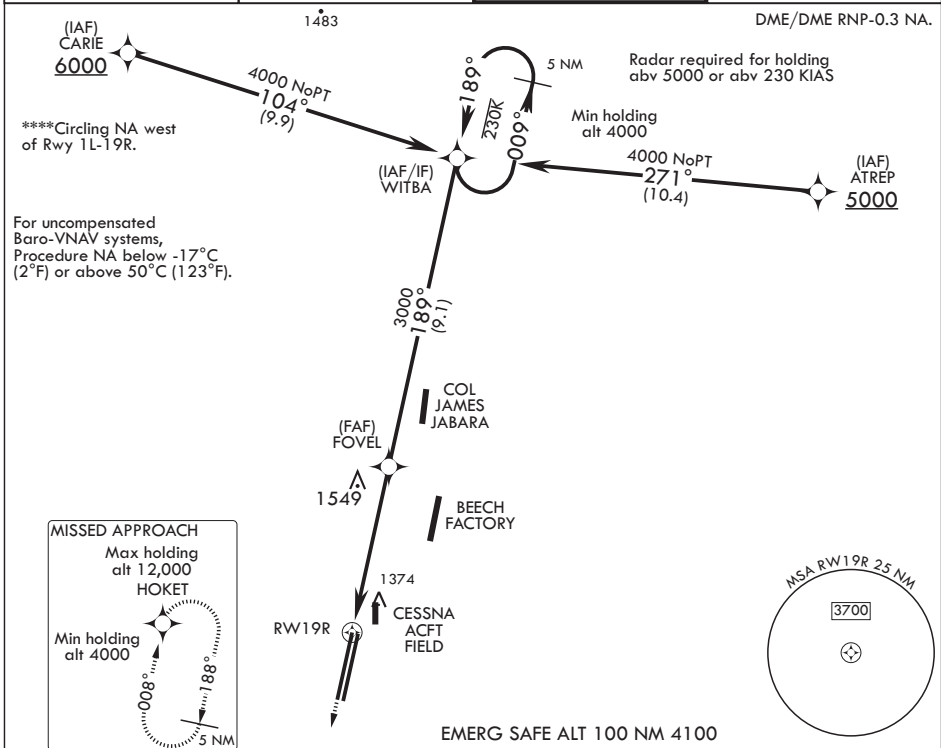
WAAS CH 71277 W19A	APCH CRS 189°	Rwy ldg 12,000	TDZE 1371
		Arprt Elev 1371	

AL-453 (USAF)

MC CONNELL AFB (KIAB)

<p>▼ * When ALS inop, increase CAT ABCDE RVR to 40, vis to 3/4 mile.                  ** When ALS inop, increase CAT ABCDE vis to 1 1/4 miles.                  *** When ALS inop increase CAT AB RVR to 55, vis to 1 mile. CAT CDE vis to 1 3/8 miles.</p>	<p>ALSF-1</p>	<p>MISSED APPROACH: Climb to 4000 direct HOKET and hold.</p>
---	---------------	--

D ATIS 124.65 269.9	WICHITA APP CON 134.8 269.1	TOWER 127.25 291.775	GND CON 118.0 275.8
------------------------	--------------------------------	-------------------------	------------------------



CATEGORY	A	B	C	D	E
LPV DA*	1571/24		200	(200-½)	
LNAV/VNAV DA**	1748/40		377	(400-¾)	
LNAV MDA***	1820/24 449 (500-½)		1820/45	449 (500-7/8)	
☐ CIRCLING****	1900-1 529 (600-1)		1900-1½ 529 (600-1½)	2400-3 1029 (1100-3)	

WICHITA, KANSAS  
Amdt 2 07DEC17

37°37'N - 97°16'W

MC CONNELL AFB (KIAB)

# RNAV (GPS) RWY 19R

NC-2, 03 JAN 2019 to 31 JAN 2019

NC-2, 03 JAN 2019 to 31 JAN 2019