

WICHITA, KANSAS

# RNAV (GPS) RWY 19L

APCH CRS	Rwy Idg	12,007
192°	TDZE	1365
	Arprt Elev	1371

AL-453 (USAF)

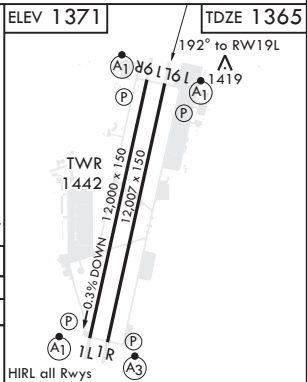
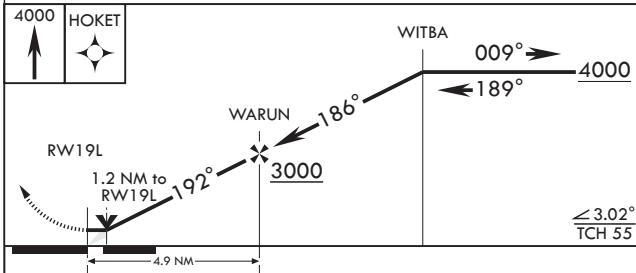
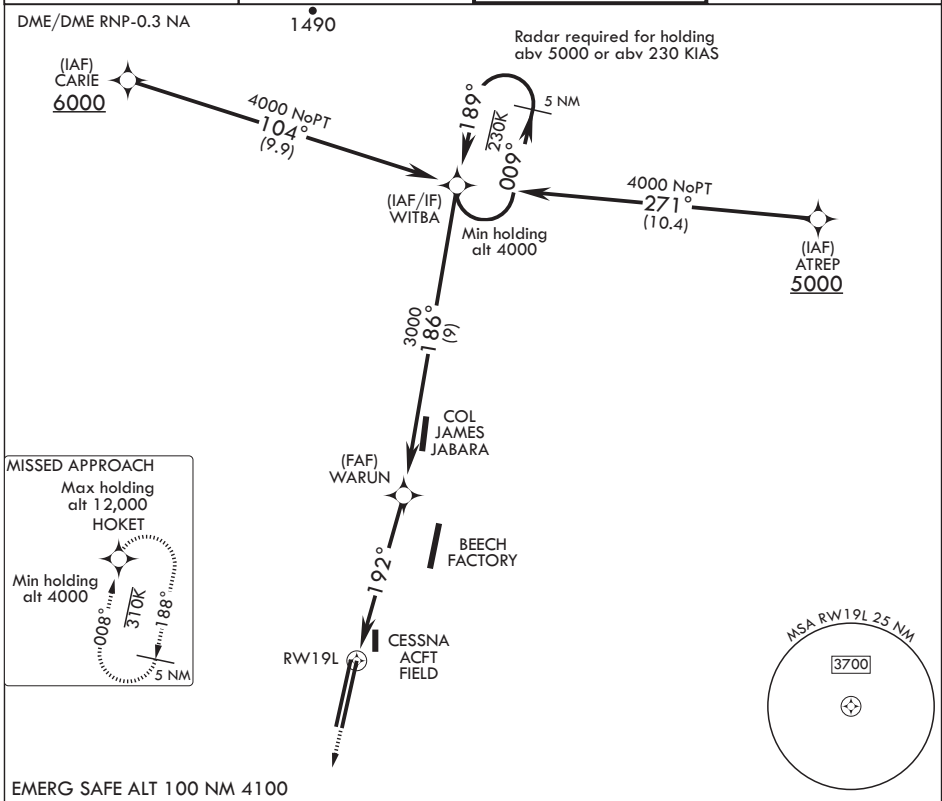
MC CONNELL AFB (KIAB)

**V** \* When ALS inop, increase CAT AB RVR to 55, vis to 1 mile; CAT CDE vis to 1 1/4 miles.  
 \*\* Circling NA west of Rwy 1L-19R.



MISSED APPROACH: Climbing left turn to 4000 direct HOKET and hold.

D ATIS 124.65 269.9	WICHITA APP CON 134.8 269.1	TOWER 127.25 291.775	GND CON 118.0 275.8
------------------------	--------------------------------	-------------------------	------------------------



CATEGORY	A	B	C	D	E
LNAV MDA*	1800/40		435	(500-3/4)	
CIRCLING**	1900-1 529 (600-1)		1900-1 1/2 529 (600-1 1/2)	2400-3 1029 (1100-3)	

WICHITA, KANSAS  
 Amdt 4 07DEC17

37°37'N - 97°16'W

MC CONNELL AFB (KIAB)

# RNAV (GPS) RWY 19L

NC-2, 03 JAN 2019 to 31 JAN 2019

NC-2, 03 JAN 2019 to 31 JAN 2019