

ILS RWY 9 (CAT II & III)

STEWART INTL (SWF)

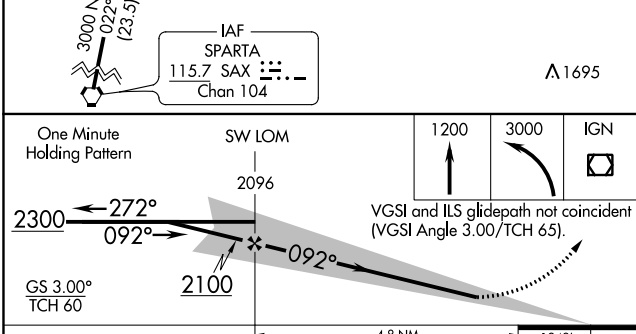
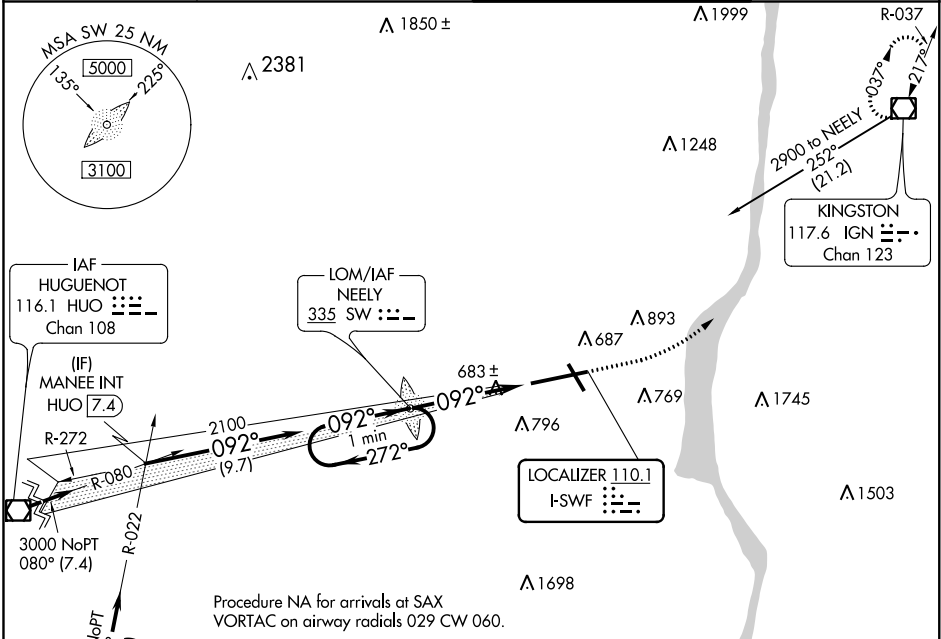
LOC I-SWF 110.1	APP CRS 092°	Rwy Idg 8817	TDZE 476
		Apt Elev 491	

⚠ CAT II: RVR 1000 authorized with specific OPSEC, MSPEC, or LOA and use of autoland or HUD to touchdown.

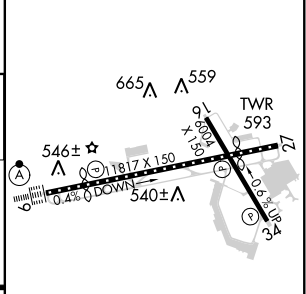


MISSED APPROACH: Climb to 1200 then climbing left turn to 3000 direct IGN VOR/DME and hold.

ATIS 124.575	NEW YORK APP CON 132.75 363.1	STEWART TOWER 121.0 254.4	GND CON 121.9
------------------------	-----------------------------------------	-------------------------------------	-------------------------



ELEV 491	D	TDZE 476
----------	----------	----------



CATEGORY	A	B	C	D
S-ILS 9		CAT II RA 97/12 100 DA 576		
S-ILS 9		CAT IIIa RVR 07		
S-ILS 9		CAT IIIb RVR 06		
S-ILS 9		CAT IIIc NA		

CATEGORY II & III ILS SPECIAL AIRCREW & AIRCRAFT CERTIFICATION REQUIRED

TDZ/CL Rwy 9
HIRL Rwys 9-27 and 16-34
REIL Rwys 16, 27 and 34

NE-2, 03 JAN 2019 to 31 JAN 2019

NE-2, 03 JAN 2019 to 31 JAN 2019