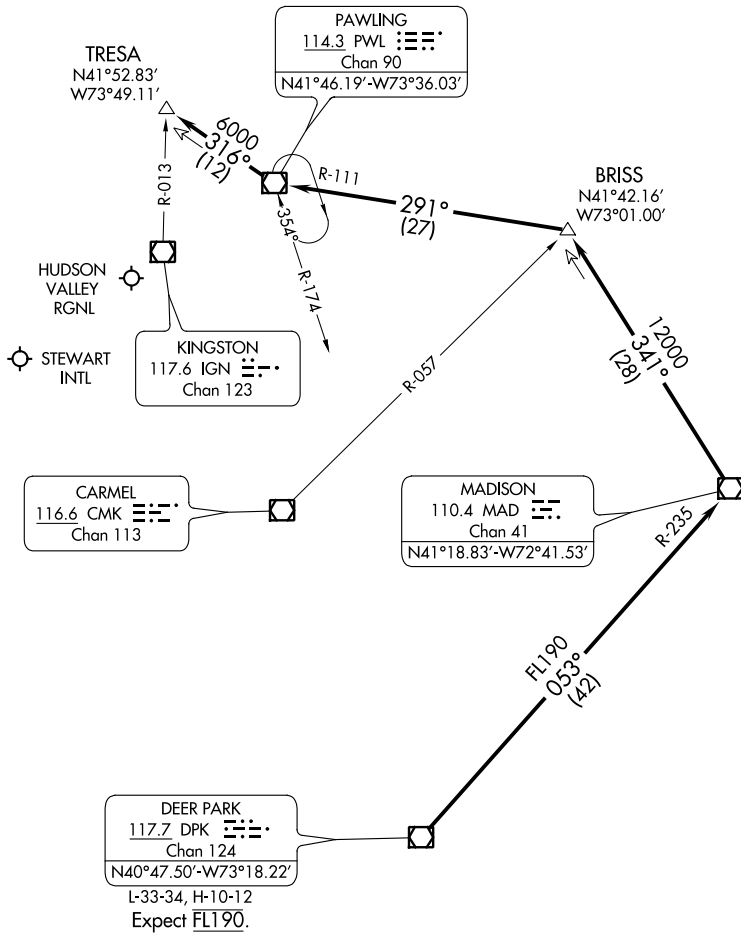


HUDSON THREE ARRIVAL

NEW YORK APP COM
 132.75 363.1
 STEWART INTL ATIS
 124.575
 HUDSON VALLEY RGNL ATIS
 126.75



NOTE: Radar required.

NOTE: Chart not to scale.

ARRIVAL ROUTE DESCRIPTION

. . . . From over DPK VOR/DME on DPK R-053 and MAD R-235 to MAD VOR/DME, then on MAD R-341 to BRISS, then on PWL R-111 to PWL VOR/DME, then on PWL R-316 to TRESA. Expect RADAR vectors to final approach course.

HUDSON THREE ARRIVAL

NE-2, 03 JAN 2019 to 31 JAN 2019

NE-2, 03 JAN 2019 to 31 JAN 2019