

# TUXXI THREE ARRIVAL

WEST PALM BEACH, FLORIDA

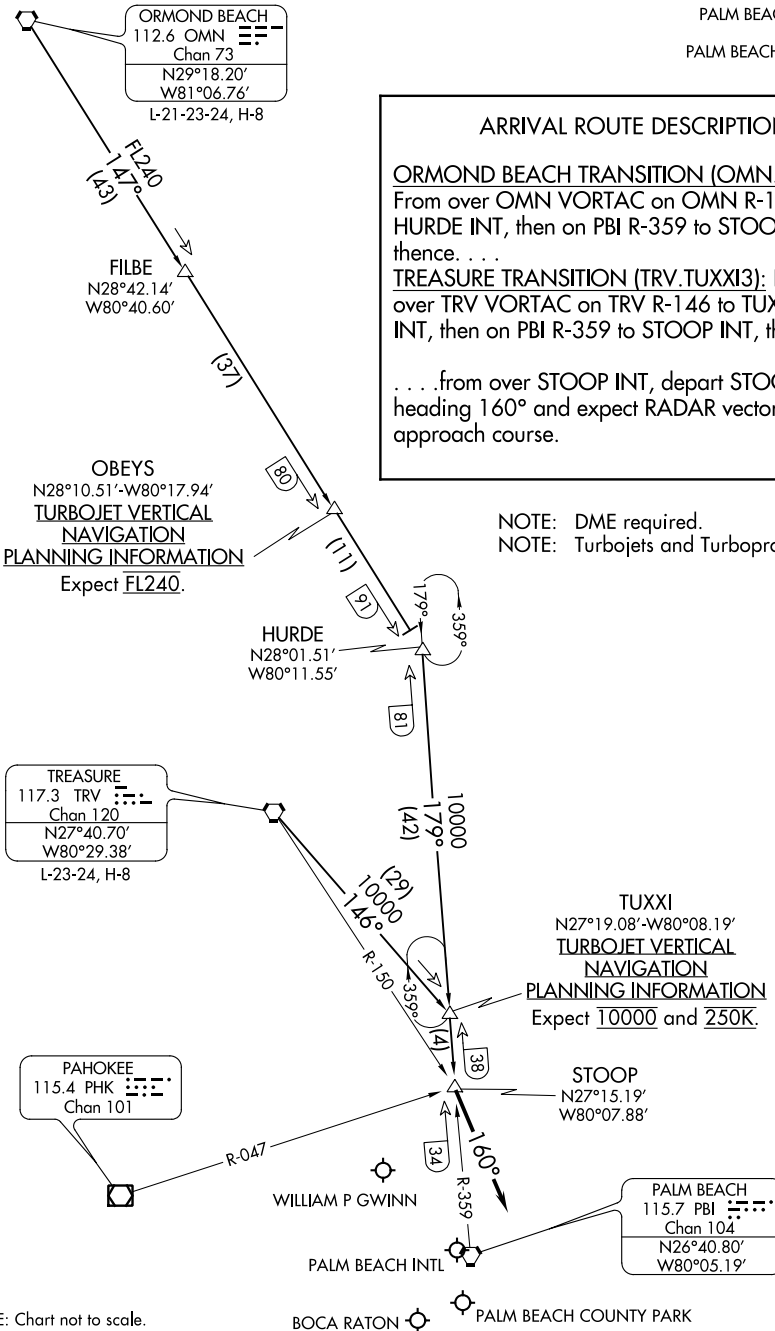
PALM BEACH APP CON  
128.3 317.4  
PALM BEACH INTL D-ATIS  
123.75

**ARRIVAL ROUTE DESCRIPTION**

**ORMOND BEACH TRANSITION (OMN.TUXXI3):**  
From over OMN VORTAC on OMN R-147 to HURDE INT, then on PBI R-359 to STOOP INT, thence. . . .

**TREASURE TRANSITION (TRV.TUXXI3):**  
From over TRV VORTAC on TRV R-146 to TUXXI INT, then on PBI R-359 to STOOP INT, thence. . . .

. . . .from over STOOP INT, depart STOOP INT heading 160° and expect RADAR vectors to final approach course.



**OBEYS**  
N28°10.51'-W80°17.94'  
**TURBOJET VERTICAL NAVIGATION**  
**PLANNING INFORMATION**  
Expect FL240.

NOTE: DME required.  
NOTE: Turbojets and Turboprops only.

**TREASURE**  
117.3 TRV  
Chan 120  
N27°40.70'  
W80°29.38'  
L-23-24, H-8

**TUXXI**  
N27°19.08'-W80°08.19'  
**TURBOJET VERTICAL NAVIGATION**  
**PLANNING INFORMATION**  
Expect 10000 and 250K.

**PAHOKEE**  
115.4 PHK  
Chan 101

**STOOP**  
N27°15.19'  
W80°07.88'

**PALM BEACH**  
115.7 PBI  
Chan 104  
N26°40.80'  
W80°05.19'

NOTE: Chart not to scale.

SE-3. 03 JAN 2019 to 31 JAN 2019

SE-3. 03 JAN 2019 to 31 JAN 2019

# TUXXI THREE ARRIVAL

WEST PALM BEACH, FLORIDA