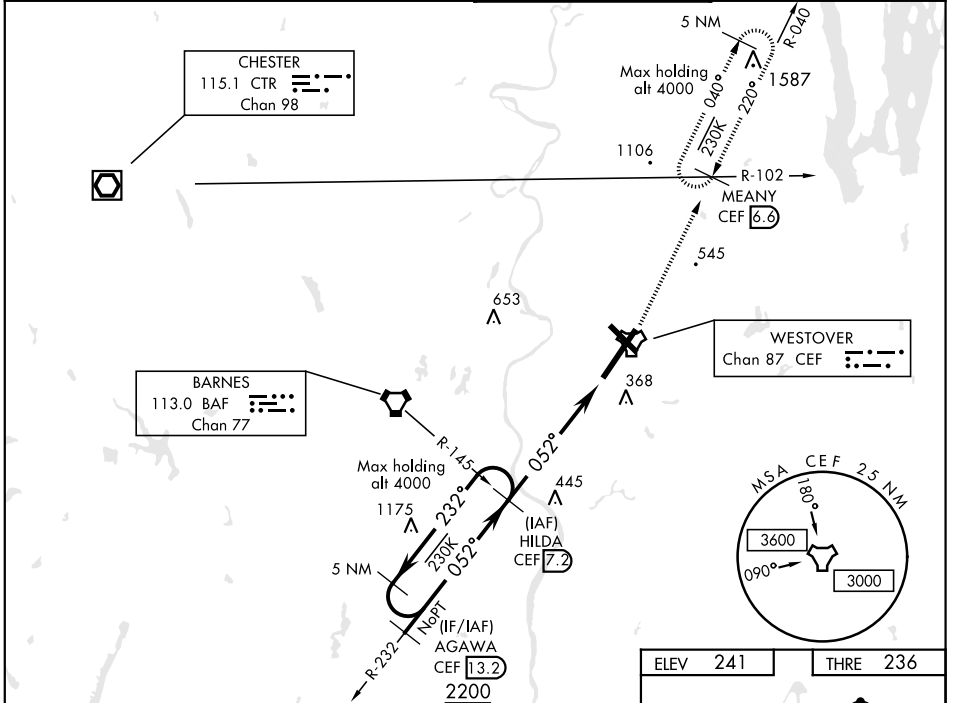


# TACAN RWY 5

TACAN CEF Chan <b>87</b>	APCH CRS <b>052°</b>	Rwy ldg <b>10,396</b> THRE <b>236</b> Arpt Elev <b>241</b>	AL-447 [USAF]	WESTOVER ARB METROPOLITAN (KCEF)
▼ <b>** When ALS inop increase CAT AB RVR to 55 and vis to 1 mile, CAT CDE vis to 1¼ miles.</b> <b>** Circling not authorized all CAT act from RWY 23 clockwise to RWY 33.</b>			ALS-F-1 	MISSED APPROACH: Climb to 2700 via CEF R-040 to MEANY and hold, expect radar vectors.

ATIS ★ <b>127.525</b>	BRADLEY APP CON <b>125.35 281.5</b>	WESTOVER TOWER ★ <b>134.85 (CTAF) 348.75</b>	GND CON <b>118.35 275.8</b>
--------------------------	--	---	--------------------------------

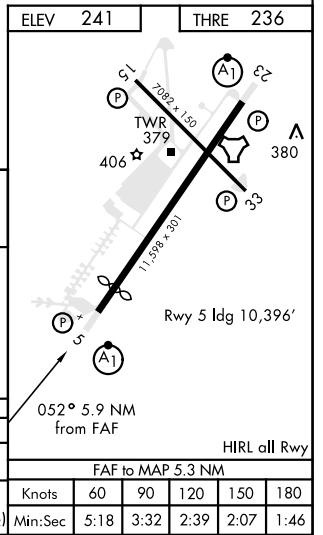
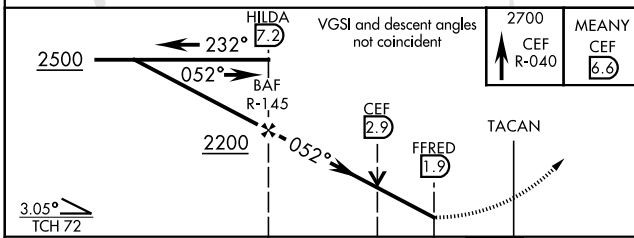


NE-1, 03 JAN 2019 to 31 JAN 2019

NE-1, 03 JAN 2019 to 31 JAN 2019

## RADAR REQUIRED

EMERG SAFE ALT 100 NM 6400



# TACAN RWY 5