

# RNAV (GPS) RWY 5

APCH CRS	Rwy ldg	<b>10,396</b>
<b>048°</b>	THRE	<b>236</b>
	Arpt Elev	<b>241</b>

AL-447 [USAF]

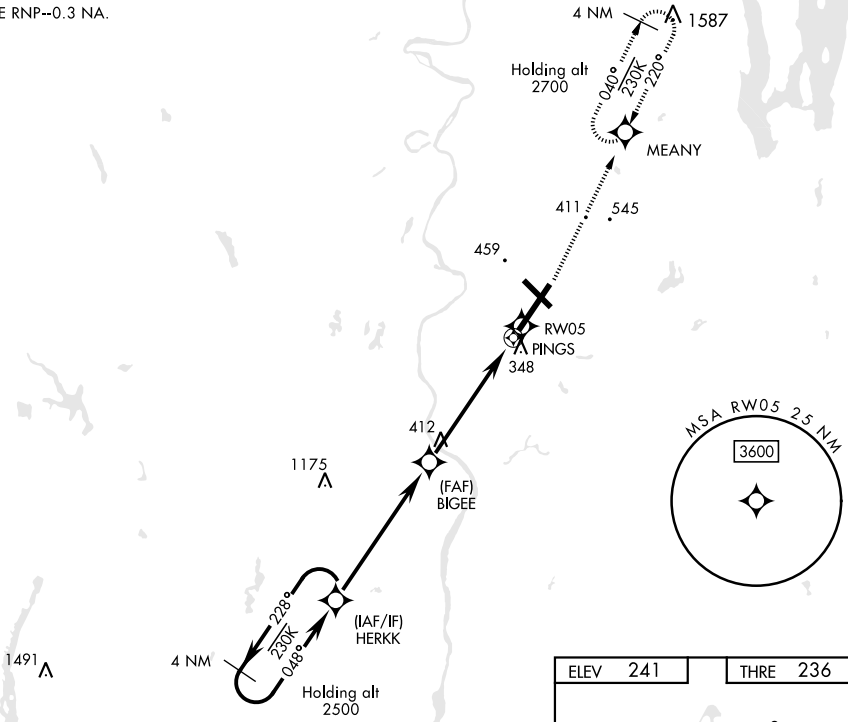
WESTOVER ARB METROPOLITAN (KCEF)

<p>▼ * When ALS inop increase CAT AB RVR to 55, vis to 1 mile, CAT CD vis to 1½ mjes. ** Circling not authorized all CAT act from Rwy 23 clockwise to Rwy 33.</p>	<p>ALSF-1 A1</p>	<p>MISSED APPROACH: Climb to 700 then climbing left turn to 2700 direct MEANY and hold. Expect radar vectors.</p>
---	----------------------	---

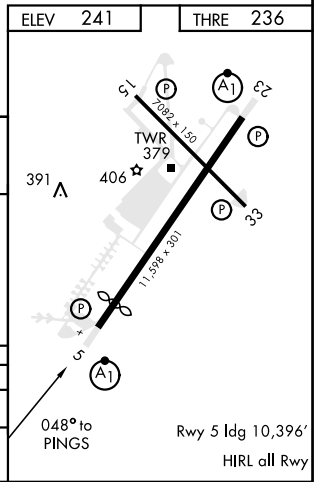
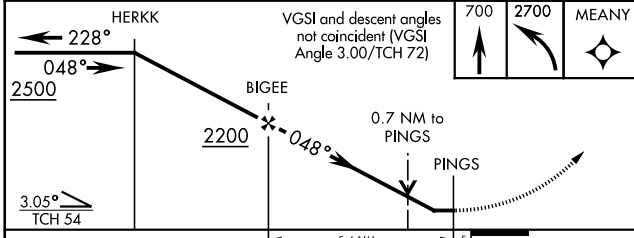
<p>ATIS ★ <b>127.525</b></p>	<p>BRADLEY APP CON <b>125.35 281.5</b></p>	<p>WESTOVER TOWER ★ <b>134.85 (CTAF) 348.75</b></p>	<p>GND CON <b>118.35 275.8</b></p>
----------------------------------	--	---	--

LNAV visibility reduction by helicopters NA.

DME/DME RNP--0.3 NA.



EMERG SAFE ALT 100 NM 6400



	ELEV 241		THRE 236	
CATEGORY	A	B	C	D
LNAV MDA *	700/40 462 (500-¾)	700/50 462 (500-1)		
CIRCLING **	780-1 539 (600-1)	820-1½ 579 (600-1½)	960-2¼ 719 (800-2¼)	

# RNAV (GPS) RWY 5

NE-1, 03 JAN 2019 to 31 JAN 2019

NE-1, 03 JAN 2019 to 31 JAN 2019