


WAAS CH 90299 W20A	APP CRS 196°	Rwy Idg 6527 TDZE 1194 Apt Elev 1194
--	------------------------	---

RNAV (GPS) RWY 20

WALLA WALLA RGNL (ALW)

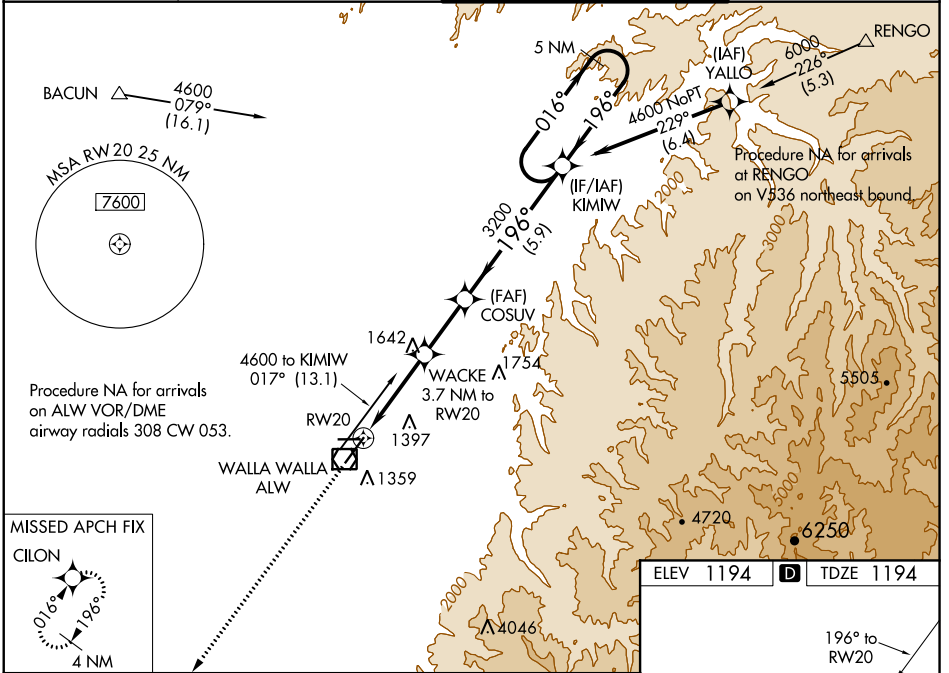
⚠ For uncompensated Baro-VNAV systems, LNAV/VNAV NA below -11°C (13°F) or above 54°C (130°F). DME/DME RNP-0.3 NA. When local altimeter setting not received, use Pendleton altimeter setting and increase all DAs/MDAs 120 feet and increase LPV RVR to 2800, LNAV/VNAV visibilities to 1½ miles, and LNAV Cat A RVR to 6000. VDP and Baro-VNAV NA when using Pendleton altimeter setting. For inoperative MALS/R when using Pendleton altimeter setting, increase LPV all Cats visibility to 1 and LNAV Cat A to 1½. # RVR 1800 authorized with use of FD or AP or HUD to DA, NA when using Pendleton altimeter setting.

MALS/R



MISSED APPROACH:
Climb to 4000 direct CILON and hold.

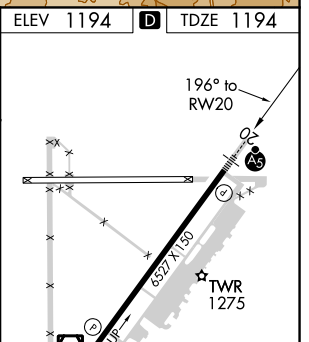
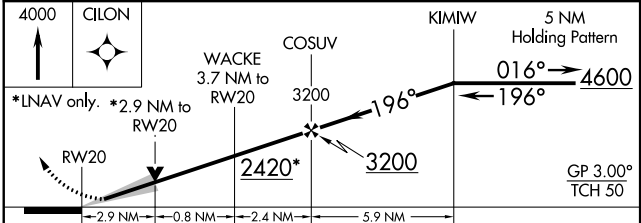
ASOS 135.875	CHINOOK APP CON * 133.15 379.15	WALLA WALLA TOWER * 118.5 (CTAF) 289.4	GND CON 121.6 289.4
------------------------	---	--	-------------------------------



MISSED APCH FIX
CILON



4 NM



CATEGORY	A	B	C	D
LPV DA#		1394/24	200 (200-½)	
LNAV/VNAV DA		1773-1½	579 (600-1½)	
LNAV MDA	2160/40 966 (1000-¾)	2160/55 966 (1000-1)	2160-2½	966 (1000-2½)
C CIRCLING	2160-1¼ 966 (1000-1¼)	2160-1½ 966 (1000-1½)	2160-3 966 (1000-3)	2300-3 1106 (1200-3)

REIL Rwy 2 **Ⓛ**
HIRL Rwy 2-20 **Ⓛ**

NW-1, 03 JAN 2019 to 31 JAN 2019

NW-1, 03 JAN 2019 to 31 JAN 2019