

# WHYTE FIVE ARRIVAL

1-NW-1, 03 JAN 2019 to 31 JAN 2019

## ARRIVAL ROUTE DESCRIPTION

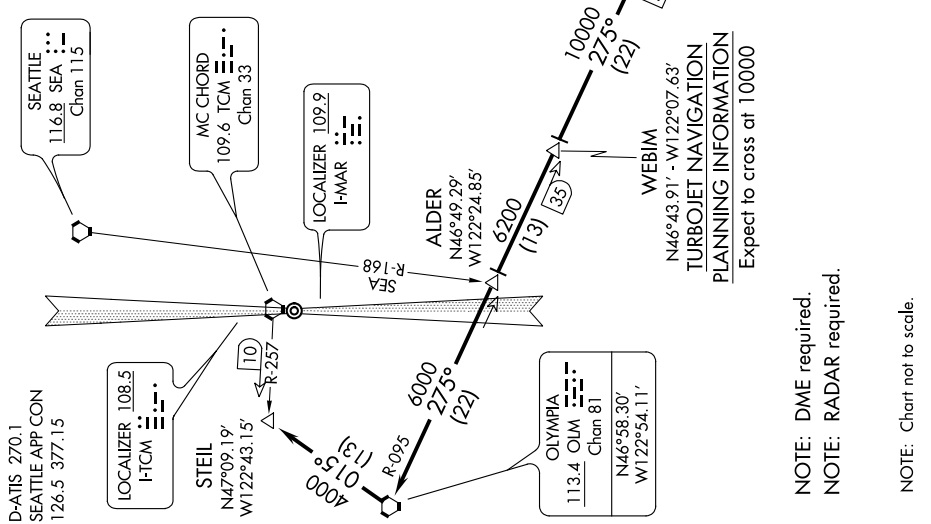
**PENDLETON TRANSITION (PDT.WHYTE5):** From over PDT VORTAC on PDT R-276 and OLM R-095 to **WHYTE**. Thence....

**YAKIMA TRANSITION (YKM.WHYTE5):** From over YKM VORTAC on YKM R-250 to **WHYTE**. Thence....

.... From over **WHYTE** on OLM R-095 to **WEBIM**, then on OLM R-095 to **ALDER INT.** Thence....

.... **RWY 16:** On OLM R-095 to OLM VORTAC, then on OLM R-015 to **STEIL**, expect ILS or LOC RWY 16 or **TACAN RWY 16**.

.... **RWY 34:** Expect ILS or LOC Y RWY 34, ILS or LOC Z RWY 34 or ILS Z RWY 34 (CAT III).



D-ATIS 270.1  
SEATTLE APP CON  
126.5 377.15

LOCALIZER 108.5  
I-TCM

STEIL  
N47°09.19'  
W122°43.15'

LOCALIZER 109.9  
I-MAR

ALDER  
N46°49.29'  
W122°24.85'

OLYMPIA  
113.4 OLM  
Chan 81  
N46°58.30'  
W122°54.11'

WEBIM  
N46°43.91' - W122°07.63'

**TURBOJET NAVIGATION  
PLANNING INFORMATION**  
Expect to cross at 10000

NOTE: DME required.  
NOTE: RADAR required.

NOTE: Chart not to scale.

# WHYTE FIVE ARRIVAL

(WHYTE.WHYTE5) 15OCT15

1-NW-1, 03 JAN 2019 to 31 JAN 2019