

RNAV (GPS) RWY 16

APCH CRS 165°	Rwy ldg 10,108 THRE 282 Arprt Elev 322
-------------------------	---

AL-414 [USAF]

MC CHORD FIELD (KTCM)

▼ * When ALS inop, increase CAT AB vis to 1 mile, CAT CDE vis to 1 3/8 miles.
** Circling not authorized E of rwy 16-34.

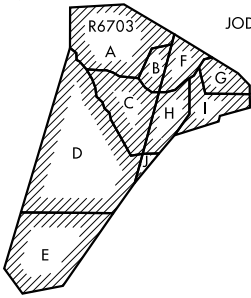
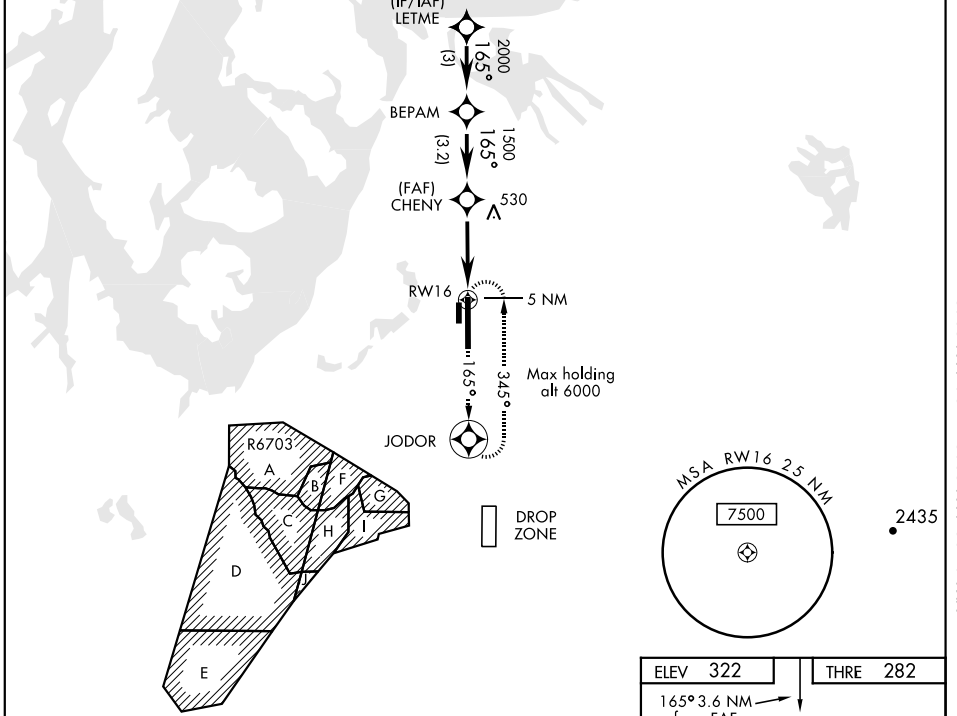


MISSED APPROACH: Climb to 4000 direct JODOR and hold. Continue climb in hold to 4000.

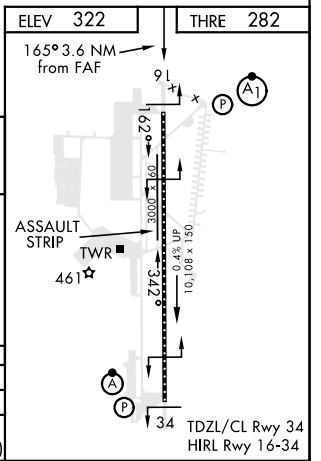
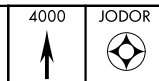
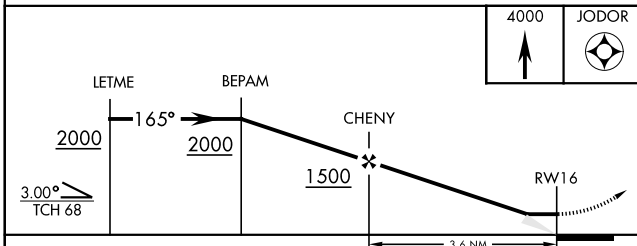
ATIS 270.1	SEATTLE APP CON 126.5 377.15	MC CHORD TOWER 124.8 259.3	GND CON 118.175 279.65
----------------------	--	--------------------------------------	----------------------------------

RADAR REQUIRED

DME/DME RNP-0.3 NA



EMERG SAFE ALT 100 NM 16,600



CATEGORY	A	B	C	D	E
LNAV MDA *	780/24	498 (500-1/2)	780/50	498 (500-1)	
CIRCLING **	940-1	619 (700-1)	940-1 3/4 619 (700-1 3/4)	940-2 619 (700-2)	1020-2 1/2 699 (700-2 1/2)

RNAV (GPS) RWY 16

NW-1, 03 JAN 2019 to 31 JAN 2019

NW-1, 03 JAN 2019 to 31 JAN 2019