

ATIS
 270.1
 GND CON
 118.175 279.65
 MC CHORD TOWER
 124.8 259.3
 SEATTLE DEP CON
 126.5 377.15

If unable to make ATC charted crossing restriction advise ATC prior to departure.

RADAR REQUIRED

Maximum 250 KIAS

Radar vectors required within 10 NM after departure

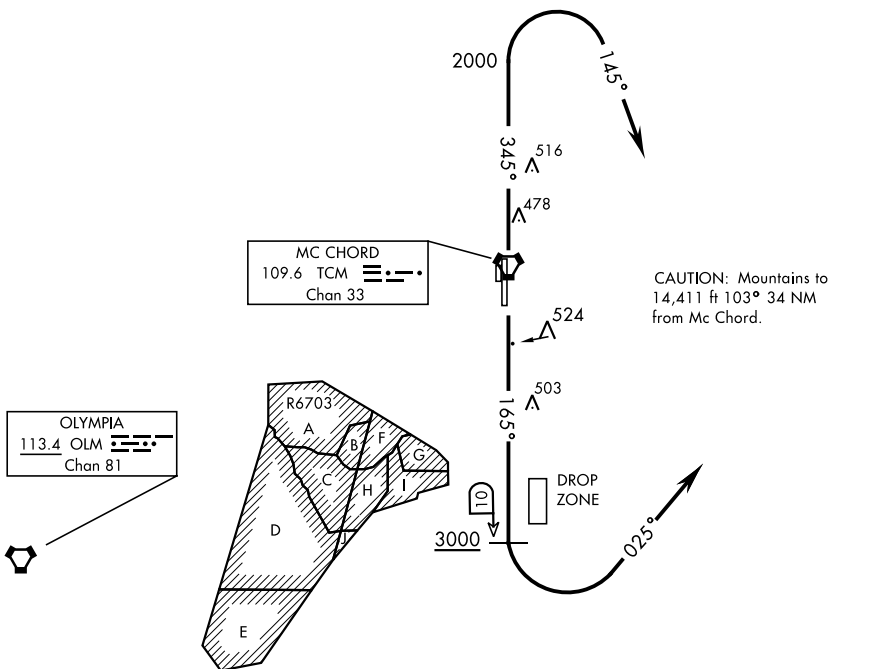


SEATTLE
 116.8 SEA
 Chan 115

L-1

NW-1, 03 JAN 2019 to 31 JAN 2019

NW-1, 03 JAN 2019 to 31 JAN 2019



CAUTION: Mountains to 14,411 ft 103° 34 NM from Mc Chord.



DEPARTURE ROUTE DESCRIPTION

TAKE-OFF RWY 16: Climb on track 165° to cross TCM VORTAC 10 DME at or above 3000.

Then turn left tracking 025° to expect radar vectors. Maintain ATC assigned altitude.

TAKE-OFF RWY 34: Climb on track 345° to 2000, then turn right tracking 145° to expect radar vectors. Maintain ATC assigned altitude.