

TACOMA, WASHINGTON

ILS or LOC RWY 34

LOC I-TCM 108.5	APCH CRS 345°	Rwy Idg THRE 10,108 Arprt Elev 322
---------------------------	-------------------------	--

AL-414 [USAF]

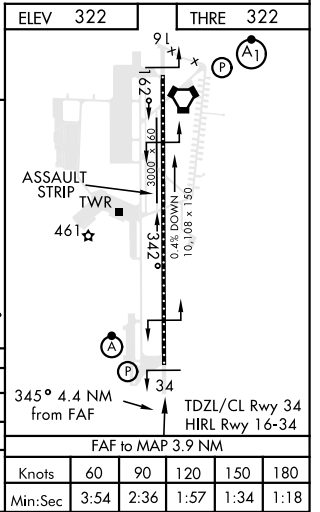
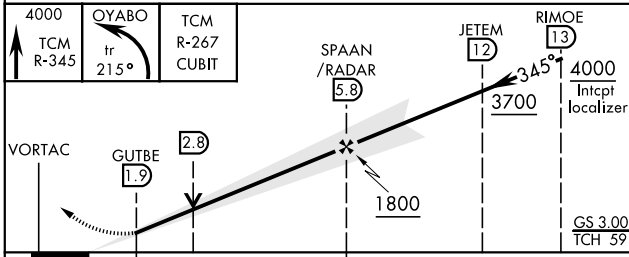
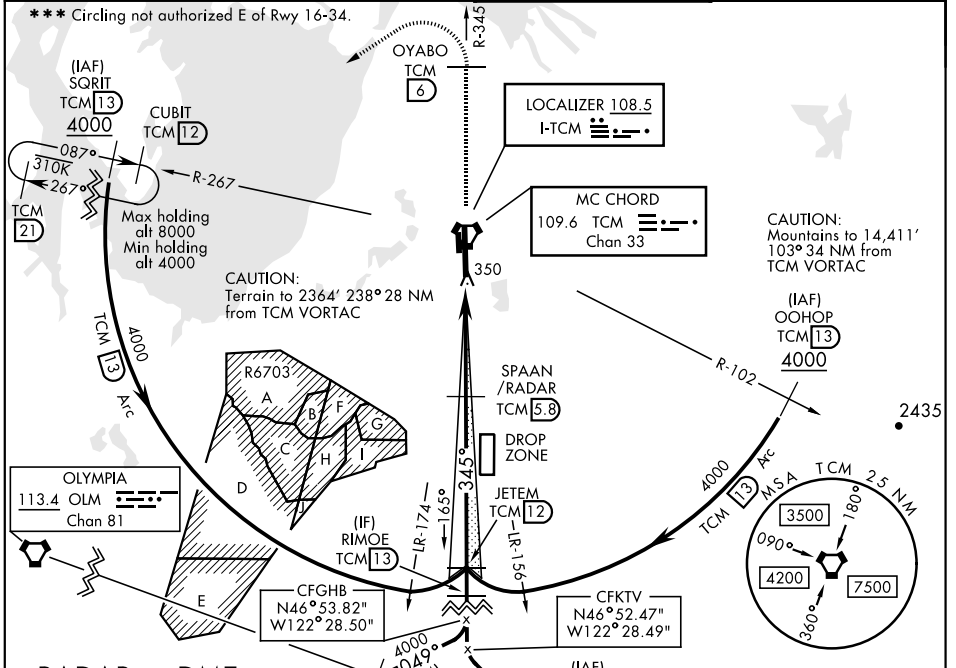
MC CHORD FIELD (KTCM)

▼ *When ALS inop, increase RVR to 40, vis to 3/4 mile.
 **When ALS inop, increase CAT AB RVR to 55, vis to 1 mile, CAT CD vis to 1 1/2 miles.



MISSED APPROACH: Climb to 4000 on TCM VORTAC R-345 to OYABO, then turn left via 215° course to intercept TCM R-267 to CUBIT and hold, continue climb in hold to 4000. Cross OYABO at or above 3000.

ATIS 270.1	SEATTLE APP CON 126.5 377.15	MC CHORD TOWER 124.8 259.3	GND CON 118.175 279.65
----------------------	--	--------------------------------------	----------------------------------



CATEGORY	A	B	C	D
S-ILS 34 *	521/18 200		(200-1/2)	
S-LOC 34 **	820/24	499 (500-1/2)	820/50	499 (500-1)
CIRCLING ***	940-1	619 (700-1)	940-1 3/4 619 (700-1 1/4)	940-2 619 (700-2)

TACOMA, WASHINGTON
Amtd 1 18AUG16

47°08'N-122°29'W

MC CHORD FIELD (KTCM)

ILS or LOC RWY 34

NW-1, 03 JAN 2019 to 31 JAN 2019

NW-1, 03 JAN 2019 to 31 JAN 2019