

TACOMA, WASHINGTON

# ILS or LOC RWY 16

LOC I-MAR <b>109.9</b>	APCH CRS <b>165°</b>	Rwy Idg THRE <b>282</b> Arpt Elev <b>322</b>
---------------------------	-------------------------	--

AL-414 [USAF]

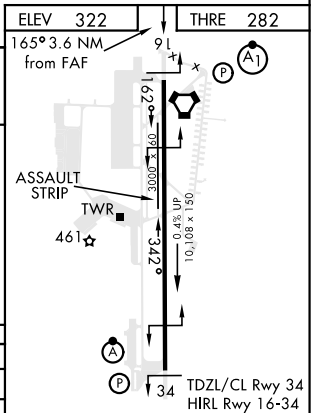
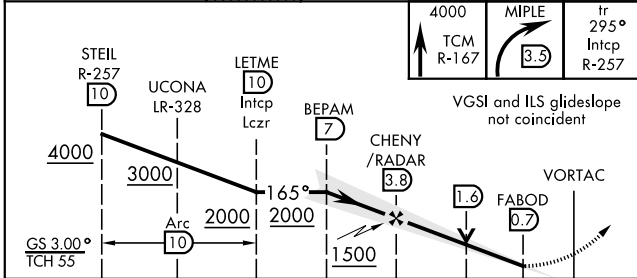
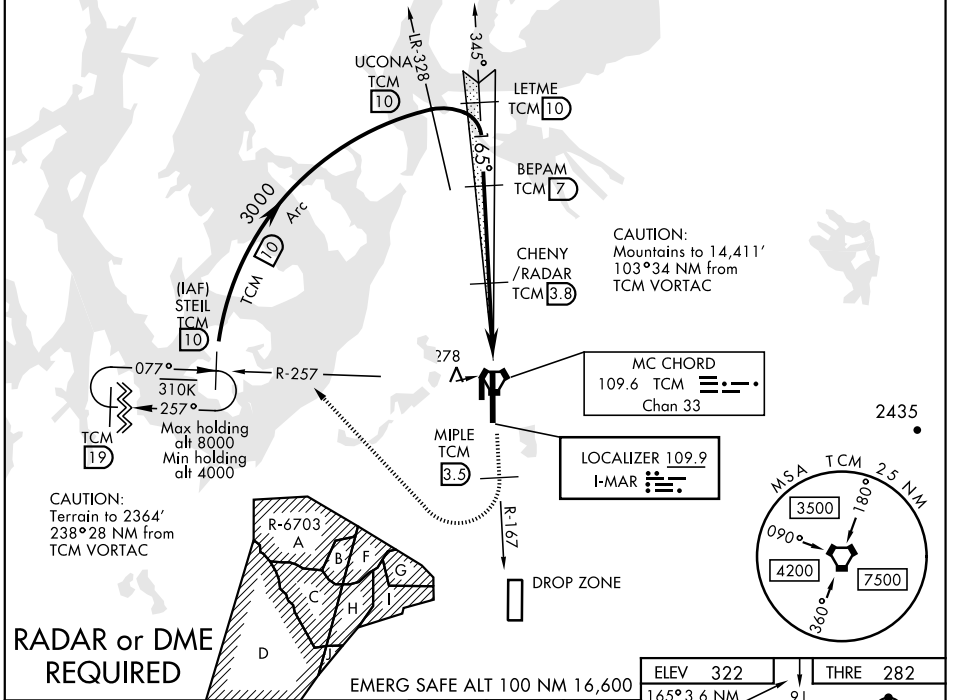
MC CHORD FIELD (KTCM)

▼ \*\* When ALS inop, increase RVR to 40, vis to 3/4 mile.  
 \*\* When ALS inop, increase CAT AB RVR to 55, vis to 1 mile, CAT CDE vis to 1 1/2 miles.

ALSF-1 (A1) MISSED APPROACH: Climb to 4000 on TCM VORTAC R-167. At 3.5 DME turn right via 295° course to intercept TCM R-257 to STEIL and hold. Continue climb in hold to 4000.

ATIS <b>270.1</b>	SEATTLE APP CON <b>126.5 377.15</b>	MC CHORD TOWER <b>124.8 259.3</b>	GND CON <b>118.175 279.65</b>
----------------------	--	--------------------------------------	----------------------------------

\*\*\* Circling not authorized E of Rwy 16-34.



CATEGORY	A	B	C	D	E
S-ILS 16*	482/24		200 (200-1/2)		
S-LOC 16**	800/24	518 (500-1/2)	800/55		518 (500-1)
CIRCLING***	940-1	619 (700-1)	940-1 1/4 619 (700-1 1/4)	940-2 619 (700-2)	1020-2 1/2 699 (700-2 1/2)

FAF to MAP 3.1 NM					
Knots	60	90	120	150	180
Min:Sec	3:06	2:04	1:33	1:14	1:02

TACOMA, WASHINGTON

47°08'N-122°29'W

MC CHORD FIELD (KTCM)

Amtd 1 15OCT15

# ILS or LOC RWY 16

NW-1, 03 JAN 2019 to 31 JAN 2019

NW-1, 03 JAN 2019 to 31 JAN 2019