

TACOMA, WASHINGTON

# ILS RWY 34 (CAT II)

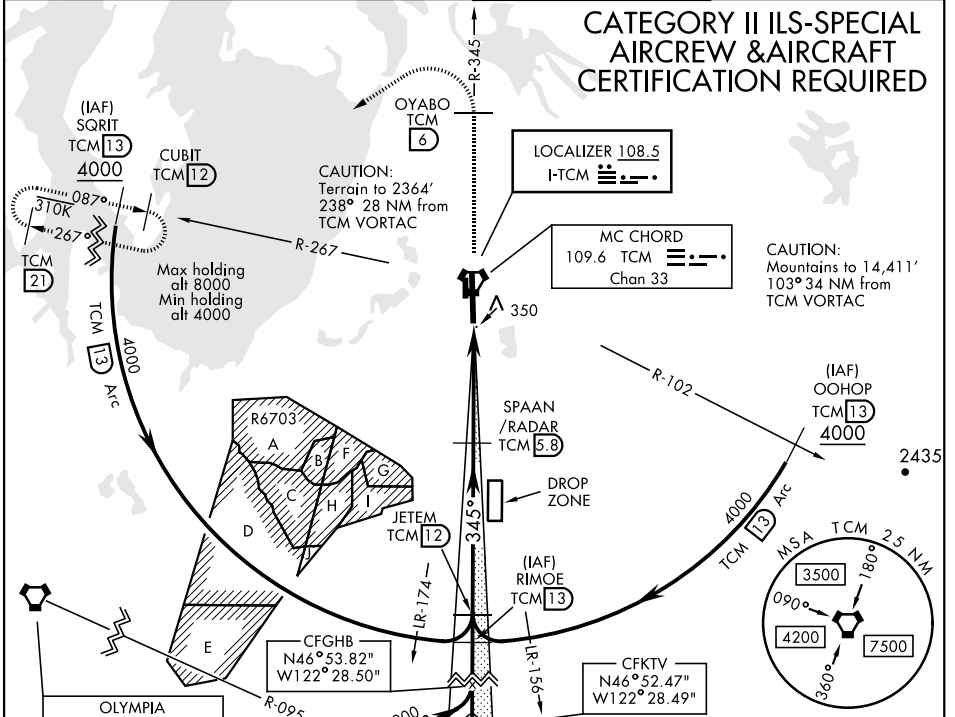
LOC I-TCM <b>108.5</b>	APCH CRS <b>345°</b>	Rwy Idg THRE Arpt Elev <b>10,108</b> <b>322</b> <b>322</b>
---------------------------	-------------------------	---

AL-414 [USAF]

MC CHORD FIELD (KTTCM)

**MISSED APPROACH:** Climb to 4000 on TCM VORTAC R-345 to OYABO, then turn left via 215° course to intercept TCM R-267 to CUBIT and hold, continue climb in hold to 4000. Cross OYABO at or above 3000.

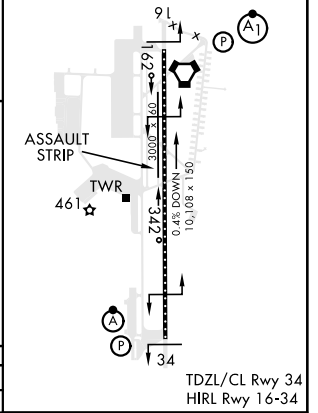
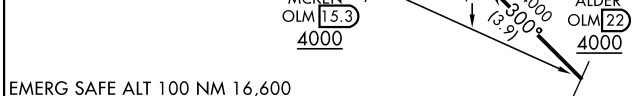
ATIS <b>270.1</b>	SEATTLE APP CON <b>126.5 377.15</b>	MC CHORD TOWER <b>124.8 259.3</b>	GND CON <b>118.175 279.65</b>
----------------------	--	--------------------------------------	----------------------------------



NW-1, 03 JAN 2019 to 31 JAN 2019

NW-1, 03 JAN 2019 to 31 JAN 2019

ELEV 322	THRE 322
----------	----------



4000 TCM R-345	OYABO ir 215°	CUBIT TCM R-267	SPAAN/RADAR 5.8	JETEM 12	RIMOEO 13
VORTAC			318 MSL		
4.4 NM			GS 3.00° TCH 59		

CATEGORY	A	B	C	D	E
S-ILS 34	RA 139/12		100	DA 421	

TACOMA, WASHINGTON 47°08'N-122°29'W MC CHORD FIELD (KTTCM)

Amdt 2 08DEC16

# ILS RWY 34 (CAT II)