

16315

ALDER-TWO DEPARTURE (ALDER2 • ALDER)

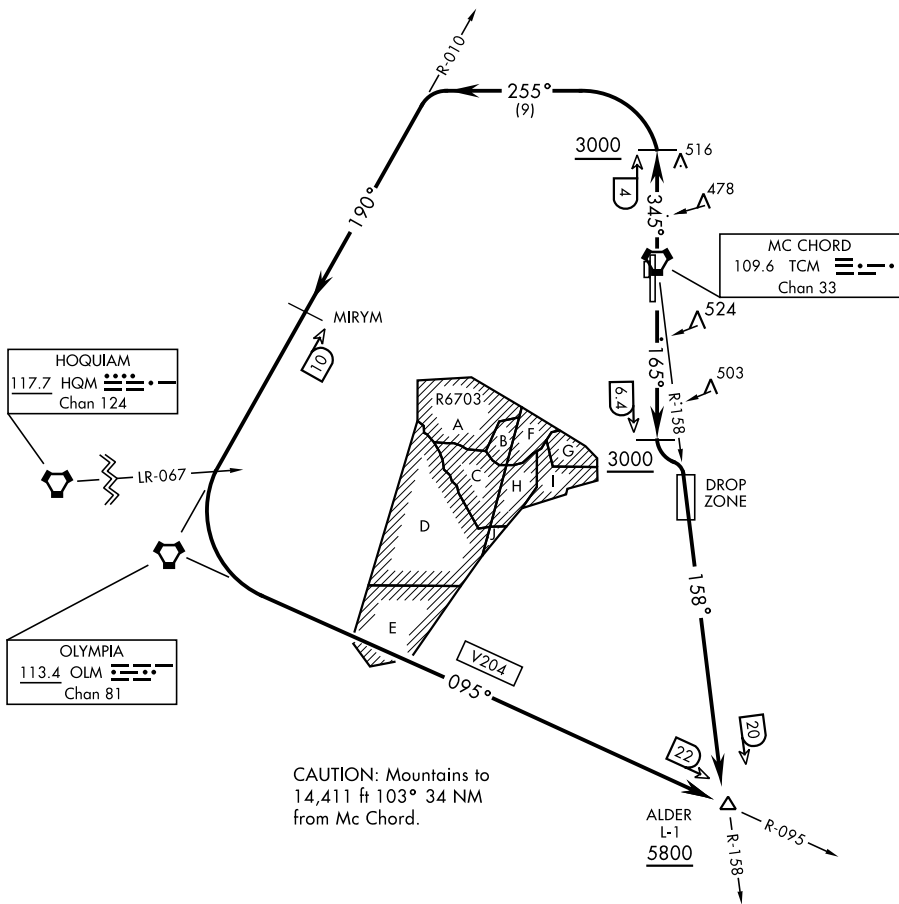
MC CHORD FIELD (KTCM)

TACOMA, WASHINGTON

SL-414 [USAF]

ATIS
 270.1
 GND CON
 118.175 279.65
 MC CHORD TOWER
 124.8 259.3
 SEATTLE DEP CON
 126.5 377.15

If unable to make ATC charted crossing restrictions advise ATC prior to departure.



NW-1, 03 JAN 2019 to 31 JAN 2019

NW-1, 03 JAN 2019 to 31 JAN 2019

DEPARTURE ROUTE DESCRIPTION

TAKE-OFF RWY 16: Climb on track 165° to cross TCM VORTAC 6.4 DME, at or above 3000. Then turn left to intercept TCM R-158 to cross ALDER at or above 5800.

TAKE-OFF RWY 34: Climb on track 345° to cross TCM VORTAC 4 DME, at or above 3000. Then turn left heading 255° to intercept OLM VORTAC R-010 MIRYM then OLM. Then via V204 to cross ALDER at or above 5800.

ALDER-TWO DEPARTURE (ALDER2 • ALDER)

TACOMA, WASHINGTON
MC CHORD FIELD (KTCM)