

WAAS CH 90205 W33A	APP CRS 329°	Rwy Idg TDZE Apt Elev	8014 165 166
--	------------------------	-----------------------------	---

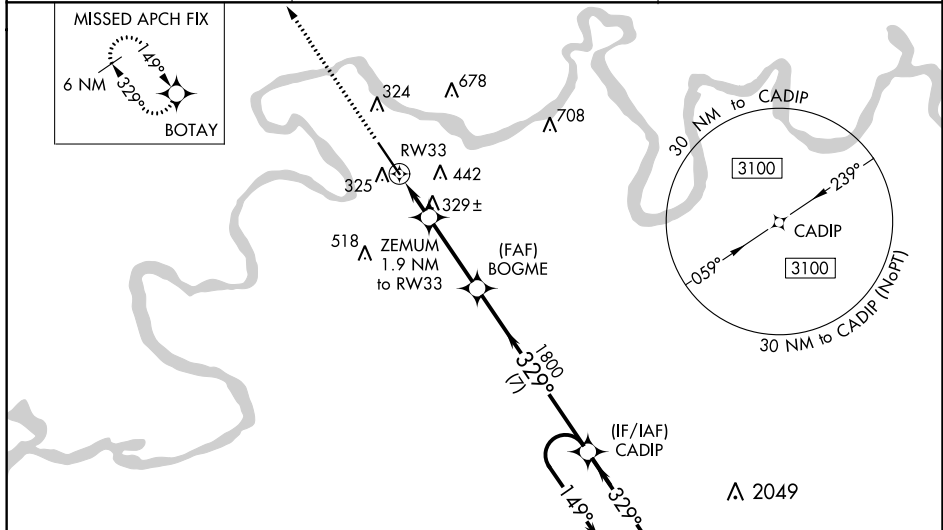
RNAV (GPS) RWY 33

CRAIG FIELD (SEM)

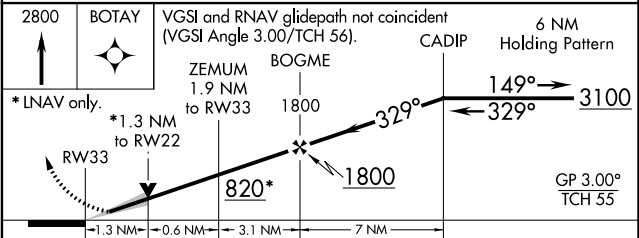
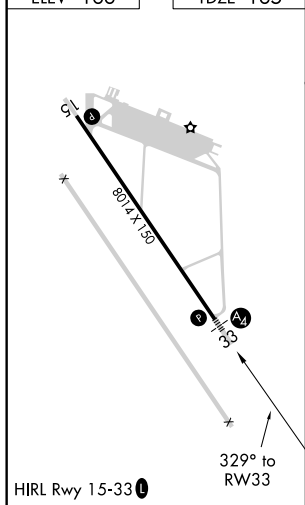
Baro-VNAV NA when using Montgomery altimeter setting. For uncompensated Baro-VNAV systems, LNAV/VNAV NA below -15°C (5°F) or above 54°C (130°F). For inoperative MALSS, increase LNAV/VNAV all Cats visibility to 3/8 mile and LNAV Cats C and D visibility to 1/8 mile. DME/DME RNP-0.3 NA. VDP NA with Montgomery altimeter setting. When local altimeter setting not received, use Montgomery altimeter setting and increase all DA 78 feet, all MDA 80 feet, LNAV Cats C and D visibility 1/8 mile and increase Circling Cat C visibility 1/2 mile and Cat D visibility 1/4 mile. For inoperative MALSS, when using Montgomery altimeter setting, increase LPV all Cats visibility to 3/8 mile, LNAV/VNAV all Cats visibility to 1 mile, LNAV Cat C and D visibility to 1 3/8 mile.

MALS	MISSED APPROACH: Climb to 2800 direct BOTAY and hold.
------	--

AWOS-3PT 119.15	MONTGOMERY APP CON * 124.0 363.025	UNICOM 122.7 (CTAF) 0
---------------------------	--	---------------------------------



ELEV 166	TDZE 165
----------	----------



CATEGORY	A	B	C	D
LPV DA		365-3/4	200 (200-3/4)	
LNAV/ DA VNAV		462-3/4	297 (300-3/4)	
LNAV MDA	580-3/4	415 (500-3/4)	580-1	415 (500-1)
CIRCLING	660-1 494 (500-1)	760-1 594 (600-1)	760-1 1/2 594 (600-1 1/2)	1040-2 3/4 874 (900-2 3/4)

SE-4, 03 JAN 2019 to 31 JAN 2019

SE-4, 03 JAN 2019 to 31 JAN 2019