

(SERFR.WWAVS1) 17173

# WWAVS ONE ARRIVAL (RNAV)

AL-375 (FAA)

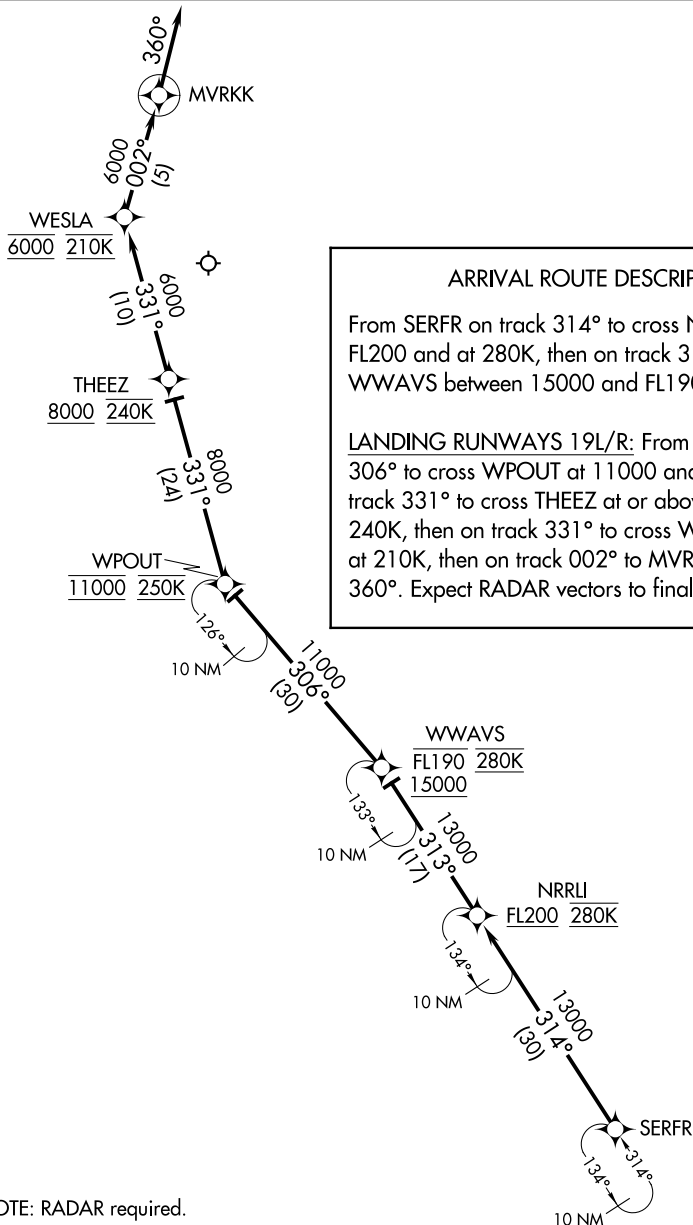
SAN FRANCISCO INTL (SFO)  
SAN FRANCISCO, CALIFORNIA

D-ATIS  
113.7 115.8 118.85  
OAKLAND CENTER  
134.55 290.5  
NORCAL APP CON  
128.575 254.25  
SAN FRANCISCO TOWER  
120.5 269.1  
GND CON  
121.8

## ARRIVAL ROUTE DESCRIPTION

From SERFR on track 314° to cross NRRLI at or above FL200 and at 280K, then on track 313° to cross WWAVS between 15000 and FL190 and at 280K.

**LANDING RUNWAYS 19L/R:** From WWAVS on track 306° to cross WPOUT at 11000 and at 250K, then on track 331° to cross THEEZ at or above 8000 and at 240K, then on track 331° to cross WESLA at 6000 and at 210K, then on track 002° to MVRKK, then on track 360°. Expect RADAR vectors to final approach course.



**ARRIVAL ROUTE DESCRIPTION**

From SERFR on track 314° to cross NRRLI at or above FL200 and at 280K, then on track 313° to cross WWAVS between 15000 and FL190 and at 280K.

**LANDING RUNWAYS 19L/R:** From WWAVS on track 306° to cross WPOUT at 11000 and at 250K, then on track 331° to cross THEEZ at or above 8000 and at 240K, then on track 331° to cross WESLA at 6000 and at 210K, then on track 002° to MVRKK, then on track 360°. Expect RADAR vectors to final approach course.

SW-2, 03 JAN 2019 to 31 JAN 2019

SW-2, 03 JAN 2019 to 31 JAN 2019

NOTE: RADAR required.

NOTE: RNAV 1.

NOTE: DME/DME/IRU or GPS required.

NOTE: Chart not to scale.

MAKRS  $\Delta$

STOKD  $\diamond$

# WWAVS ONE ARRIVAL (RNAV)

(SERFR.WWAVS1) 10DEC15

SAN FRANCISCO, CALIFORNIA  
SAN FRANCISCO INTL (SFO)