

WESLA FOUR DEPARTURE (RNAV)

AL-375 (FAA)

SAN FRANCISCO INTL (SFO)
SAN FRANCISCO, CALIFORNIA

D-ATIS
113.7 115.8 118.85
CLNC DEL
118.2
CPDLC
GND CON
121.8
SAN FRANCISCO TOWER
120.5 269.1
NORCAL DEP CON
135.1 307.2

**TOP ALTITUDE:
3000**

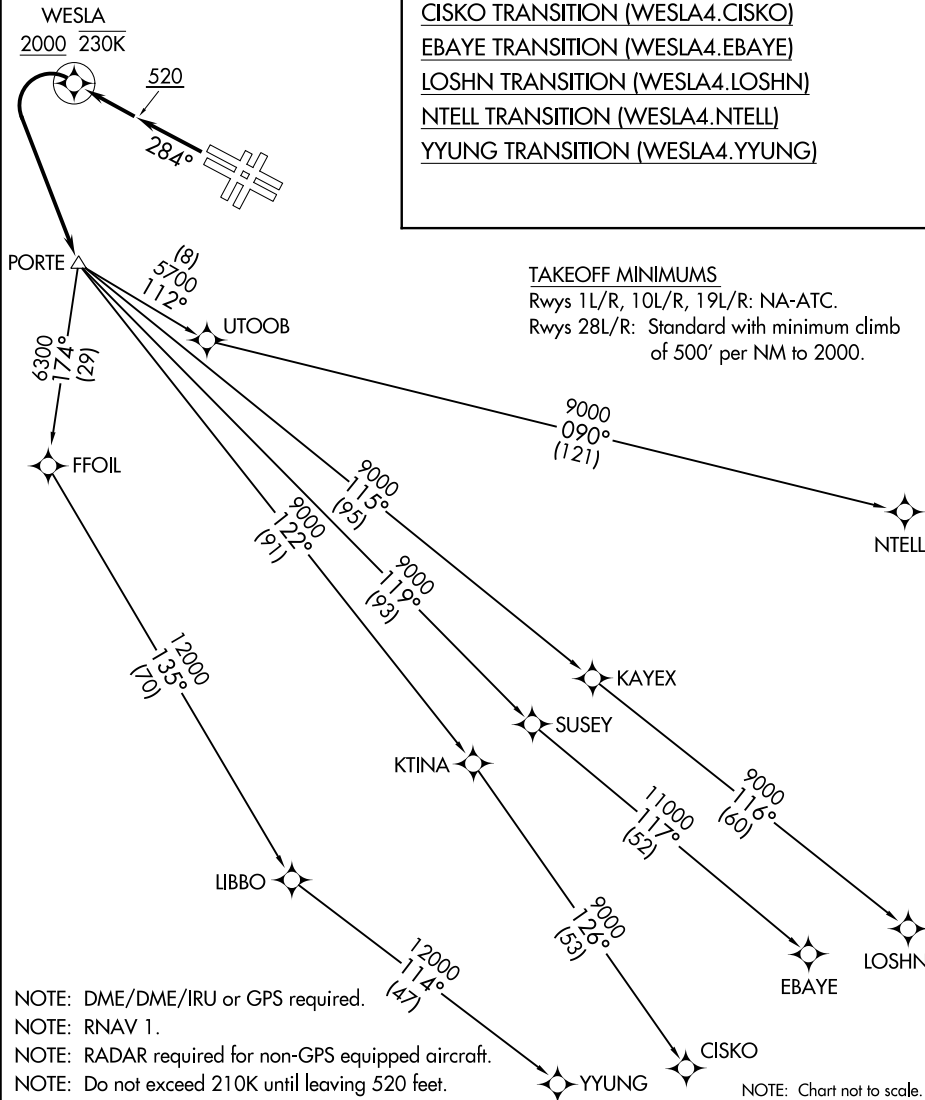
DEPARTURE ROUTE DESCRIPTION

TAKEOFF RUNWAYS 28L/R: Climb heading 284° to 520, then direct WESLA at or above 2000 at or below 230K, then left turn direct PORTE, thence
. . . . on (transition) maintain 3000, expect filed altitude 10 minutes after departure.

- CISCO TRANSITION (WESLA4.CISCO)
- EBAYE TRANSITION (WESLA4.EBAYE)
- LOSHN TRANSITION (WESLA4.LOSHN)
- NTELL TRANSITION (WESLA4.NTELL)
- YYUNG TRANSITION (WESLA4.YYUNG)

TAKEOFF MINIMUMS

Rwys 1L/R, 10L/R, 19L/R: NA-ATC.
Rwys 28L/R: Standard with minimum climb of 500' per NM to 2000.



- NOTE: DME/DME/IRU or GPS required.
- NOTE: RNAV 1.
- NOTE: RADAR required for non-GPS equipped aircraft.
- NOTE: Do not exceed 210K until leaving 520 feet.

NOTE: Chart not to scale.

SW-2, 03 JAN 2019 to 31 JAN 2019

SW-2, 03 JAN 2019 to 31 JAN 2019

WESLA FOUR DEPARTURE (RNAV)

(WESLA4.WESLA) 13SEP18

SAN FRANCISCO, CALIFORNIA
SAN FRANCISCO INTL (SFO)