

# TIPP TOE VISUAL RWY 28L/R

AL-375 (FAA)

SAN FRANCISCO INTL (SFO)  
SAN FRANCISCO, CALIFORNIA

LOCALIZER 111.7  
I-GWQ  
Chan 54

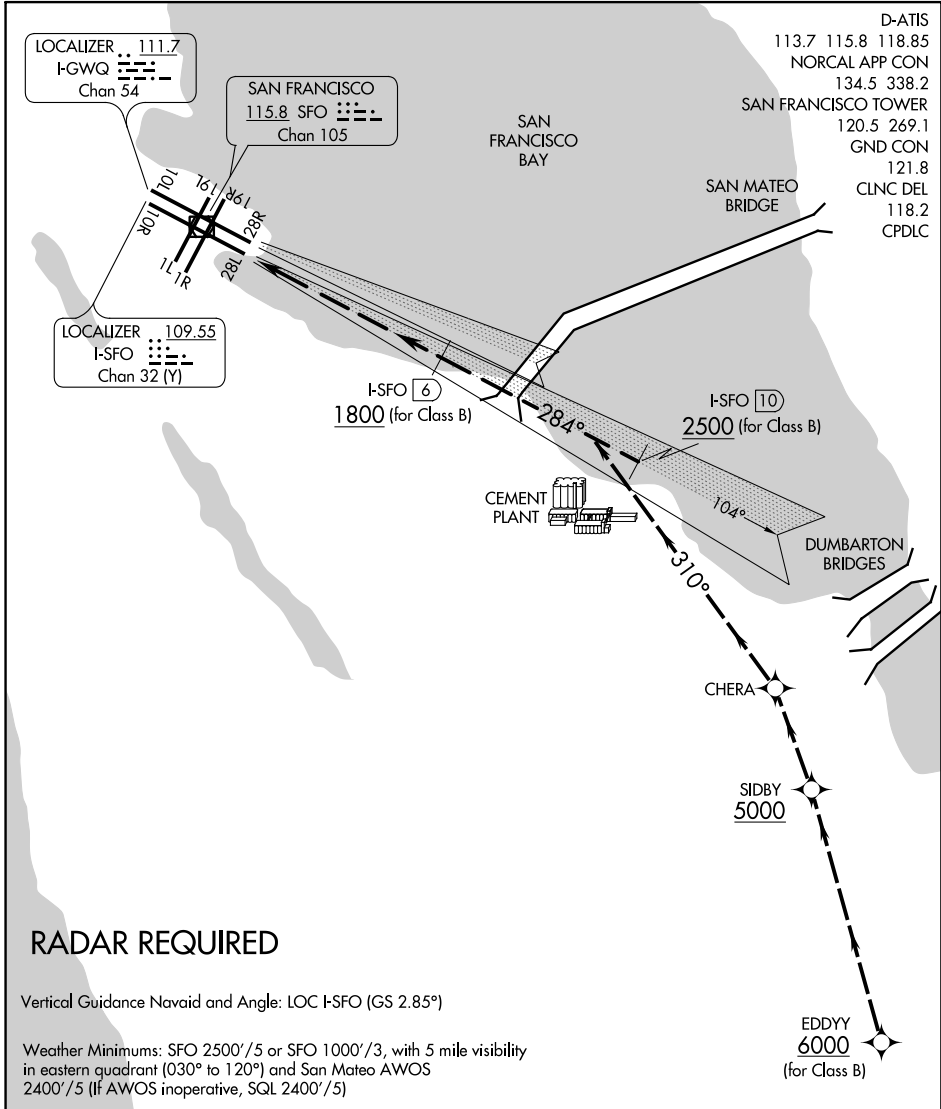
SAN FRANCISCO  
115.8 SFO  
Chan 105

LOCALIZER 109.55  
I-SFO  
Chan 32 (Y)

D-ATIS 113.7 115.8 118.85  
NORCAL APP CON 134.5 338.2  
SAN FRANCISCO TOWER 120.5 269.1  
GND CON 121.8  
CLNC DEL 118.2  
CPDLC

SW-2, 03 JAN 2019 to 31 JAN 2019

SW-2, 03 JAN 2019 to 31 JAN 2019



## RADAR REQUIRED

Vertical Guidance Navaid and Angle: LOC I-SFO (GS 2.85°)

Weather Minimums: SFO 2500'/5 or SFO 1000'/3, with 5 mile visibility in eastern quadrant (030° to 120°) and San Mateo AWOS 2400'/5 (If AWOS inoperative, SQL 2400'/5)

1	2	3	4	5	6	7	8	9	10	11	12	13	14	15	16
---	---	---	---	---	---	---	---	---	----	----	----	----	----	----	----

### TIPP TOE VISUAL APPROACH RUNWAY 28L/R

NOTE: Closely spaced parallel visual approaches may be in progress. In the event of a go-around on Runway 28L, turn left heading 265° or on Runway 28R, heading 280°, climb and maintain 3000 or as directed by ATC.

# TIPP TOE VISUAL RWY 28L/R

Amdt 2 29MAR18

37°37'N-122°23'W

SAN FRANCISCO, CALIFORNIA  
SAN FRANCISCO INTL (SFO)