

**TOP ALTITUDE:
ASSIGNED BY ATC**

RED BLUFF
115.7 RBL
Chan 104
N40°05.93'-W122°14.18'
L-2, H-3

D-ATIS
113.7 115.8 118.85
CPDLC
GND CON
121.8
SAN FRANCISCO TOWER
120.5 269.1
NORCAL DEP CON
120.9 323.2

TAKEOFF MINIMUMS

Rwys 1L/R: Standard.

Rwys 28L/R: Standard with a minimum climb of 351' per NM to 1300.

NOTE: RADAR required.

NOTE: Rwys 1L/R: DME required.

SACRAMENTO
115.2 SAC
Chan 99
N38°26.62'-W121°33.10'
L-2-3, H-3

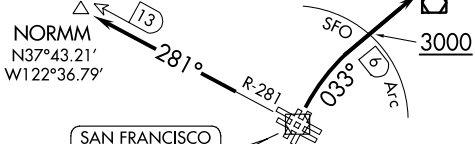
SAUSALITO
116.2 SAU
Chan 109
N37°51.32'-W122°31.37'
L-2-3, H-3

CONCORD
117.0 CCR
Chan 117
N38°02.70'-W122°02.71'
L-2-3

LINDEN
114.8 LIN
Chan 95
N38°04.47'-W121°00.23'
L-2-3, H-3

OAKLAND
116.8 OAK
Chan 115
N37°43.56'-W122°13.42'
L-2-3, H-3

SAN FRANCISCO
115.8 SFO
Chan 105



NOTE: Chart not to scale.

DEPARTURE ROUTE DESCRIPTION

TAKEOFF RUNWAYS 1L/R: Climbing right turn heading 033° or ATC assigned heading to cross SFO 6 DME at or above 3000 for RADAR vectors to assigned route/fix. Expect further clearance to filed altitude 10 minutes after departure.

TAKEOFF RUNWAYS 28L/R: Climb on SFO VOR/DME R-281 to NORMM INT/SFO 13 DME; then expect RADAR vectors to assigned route/fix. Expect further clearance to filed altitude 10 minutes after departure.

LOST COMMUNICATIONS:

If not in contact with departure control after reaching 3000, continue climb to filed altitude and proceed direct to assigned route/fix.