

APP CRS	Rwy Idg	10704
104°	TDZE	10
	Apt Elev	13

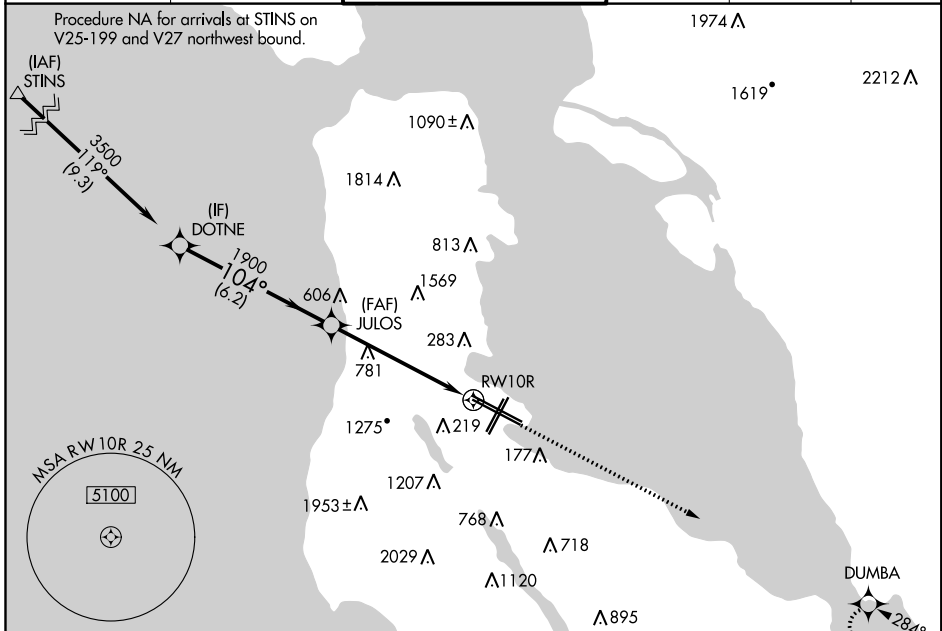
RNAV (GPS) Y RWY 10R

SAN FRANCISCO INTL (SFO)

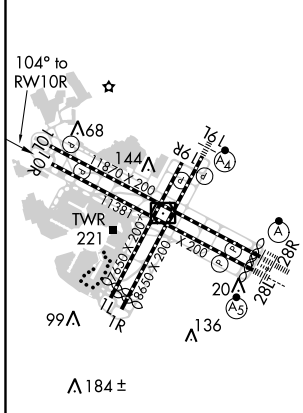
⚠ DME/DME RNP-0.3 NA. When VGSI inop, procedure NA at night. Helicopter visibility reduction below RVR 5000 NA.

MISSED APPROACH: Climb to 4000 direct DUMBA and hold.

D-ATIS 113.7 115.8 118.85	NORCAL APP CON 134.5 338.2	SAN FRANCISCO TOWER 120.5 269.1	GND CON 121.8	CLNC DEL 118.2	CPDLC
---	--------------------------------------	---	-------------------------	--------------------------	-------



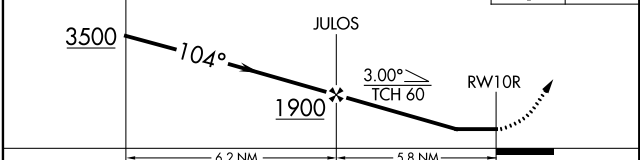
ELEV 13	D	TDZE 10
---------	----------	---------



TDZ/CL Rwy 19L and 28R
REIL Rwy 1L, 1R and 10L
HIRL all Rwy

VGSI and descent angles not coincident (VGSI Angle 3.00/TCH 68).

4000 DUMBA



CATEGORY	A	B	C	D
RNAV MDA	1200/60 1190 (1200-1¼)	1200-1½ 1190 (1200-1½)	1200-3	1190 (1200-3)

SW-2, 03 JAN 2019 to 31 JAN 2019

SW-2, 03 JAN 2019 to 31 JAN 2019